



2013 Industrial Products Catalog

Index



1-800-424-7633

MSI-PRO Products: www.msipro.com





The MSI-PRO Advantage

MSI-PRO was founded in 1988 as a subsidiary of the Jewett-Cameron Companies and is an importer and distributor of quality tools. MSI-PRO is dedicated to providing the finest quality tools at competitive prices with an attention to service.

As you will see, this catalog reflects the recent additions to our growing range of products including, Avenger Products and Promax Tools. These products are sold to the Automotive, Contractor, Do-It-Yourself and Industrial trades through distributors.



Table of Contents

Air Tools

Accessories.....	23-24
Caulking Gun.....	20
Cut-Off Tools.....	11
Die Grinders.....	8-9
Drills.....	10
Grinders.....	19
Hammers/Needle Scalars and Flux Chippers.....	12
Impact Wrenches.....	14-15
Punch.....	20
Ratchet Wrenches.....	16
Riveters.....	21
Sanders - Belt.....	18
Sanders - Disc.....	17
Sanders - Random Orbital.....	17
Sanders - Wet.....	16
Screwdrivers.....	13
Spray Guns.....	20
Tool Kits.....	22

Cutting Tools

Carbide Brad Point Drills.....	39
Carbide Hinge Boring Bits.....	38
Carbide Scribes.....	57
Corner Chisels.....	52
Countersinks.....	39
Forstners Bits.....	38
Hinge Bits.....	57
Plug Cutters.....	39
Screw Hole Extractors.....	57
Step Drills.....	39
Tapered Drills.....	37

Diamond Products

Burrs.....	36
Cutting Wheels.....	36
Files.....	58
Hole Saws.....	34-35
Wheel Dresser.....	57
Wheels.....	36

Measuring Tools

Combination Squares.....	59
Compass & Calipers.....	59
Dial Calipers.....	55
Dial Indicator.....	56
Digital Calipers.....	55
Height Gauge.....	61
Magnetic Base.....	56
Outside Micrometers.....	56
Precision Squares.....	61
Protractor Saw Guide.....	59
Step Gauge.....	62
Thickness Gauge.....	61
Vernier Caliper.....	59

Safety Products & Shop Tools

Center Finder.....	62
Drill Guide.....	61
Feather Boards.....	62
Files / Wood Riffles.....	58
Glue Applicators.....	60
Jointer Hone.....	60
Knobs.....	57
Push Stick.....	62
Sanding Drum Kits.....	50
Taper Jig.....	62

Saws Blades - Carbide

Aluminum Cutting Blades.....	30
Combination.....	27-29
Dado Set.....	32
Miter / Table Saw Blades.....	28-29
Nail Cutting Blade.....	31
Portable Tool Blades.....	27
Promotional Blades - Contractor.....	33
Rescue Blades.....	31
Rip.....	28
Saw Bushing Kit.....	33
Steel Cutting Blades.....	30-31

Saws Blades - Steel

Plywood Blade.....	33
Steel Cutting Blade.....	33
Vinyl Siding Blade.....	33

Toggle Clamps

Horizontal.....	44-45
Latch.....	49-50
Push/Pull.....	46-49
Vertical.....	41-43
Wagon Brakes.....	47,49
Pliers.....	53
Accessories.....	53

MSI-PRO Air Tools & Accessories

The MSI-PRO Advantage

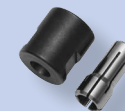
MSI-PRO products offers a full line of industrial air tools, Drills, Impact Wrenches and Grinders for industrial and contractor application.



High Horsepower Die Grinders Up to 1.5hp

Features

- Heavy duty construction for industrial high speed grinding
- Includes both 1/4" and 3/8" collets
- Ball bearing construction for longer tool life
- Variable speed throttle for positive speed control
- Cylinder constructed of high quality steel



Steel Body Die Grinders

Includes 1/4" and 3/8" Collets

MP-961ST

.5HP Die Grinder
Includes 1/4" Collet
Does not accept 3/8" collet



Includes rear exhaust hose

MP-719

1.0HP Die Grinder
Includes 1/4"
& 3/8" Collets



MP-930ST

1.50HP Die Grinder Steel Body
Includes 1/4" & 3/8" Collets



MP-930LST

1.0HP Extended Nose Die
Grinder Steel Body Includes
1/4" & 3/8" Collets



Comfort Grip Body Die Grinders

Includes 1/4" and 3/8" Collets

MP-830

1.35HP Die Grinder
With Comfort Grip Body
Includes 1/4" & 3/8" Collets



MP-830L

1.0HP Extended Nose Die
Grinder With Comfort Grip Body,
Includes 1/4" & 3/8" Collets

MP-832

1.25HP Right Angle Die Grinder
With Comfort Grip Body
Includes 1/4" & 3/8" Collets



MP-932ST

1.40HP Right Angle Die Grinder Steel
Body - Includes 1/4" & 3/8" Collets



Warranty Information

- All Industrial air tools are warranted against defects in material and workmanship for six months.

Model	RPM	HP	Collets	Air Inlet Thread (N.P.T.)	Air Hose Size	Air Pressure (PSI)	Air Cons. (CFM)	Length	Weight (Lbs.)
MP-719	18,000	1	1/4" & 3/8"	1/4"	3/8"	90	5	7-1/2"	2.75
MP-830	20,000	1.35	1/4" & 3/8"	1/4"	3/8"	90	4.5	8-1/4"	2.05
MP-830L	18,000	1	1/4" & 3/8"	1/4"	3/8"	90	4.5	13"	2.75
MP-832	12,000	1.25	1/4" & 3/8"	1/4"	3/8"	90	4.5	9"	2.25
MP-930LST	18,000	1	1/4" & 3/8"	1/4"	3/8"	90	4.5	12-3/4"	3
MP-930ST	20,000	1.5	1/4" & 3/8"	1/4"	3/8"	90	4.5	7-1/2"	2.50
MP-932ST	12,000	1.4	1/4" & 3/8"	1/4"	3/8"	90	4.5	8-3/4"	3.25
MP-961ST	23,000	.5	1/4"	1/4"	3/8"	90	4.2	7-1/4"	1.50



Multi-Function Air Tools With Interchangeable Heads



MP-601KIT-B
3pc Set - Includes Motor, Die Grinder & Cut Off Tool Multi-Function Tools

MP-601KIT-A
6pc Set - Includes Motor, Jig Saw, Drill, Circle Hole Cutter, Sander & Shear Multi-Function Tools



MP-7312
1/2" Adjustable Head Ratchet

Compact Series Air Tools



MP-7058
1/4" Drill Compact Series



MP-7059
1/4" Impact Compact Series



MP-7074
Screwdriver with quick change chuck Compact Series

MP-7016
Thru-Hole Ratchet Wrench Kit with 1/4", 3/8", 7/16" & 1/2" Socket plus 3/8" adapter



Ratchet and Sander Tools



MP-575
3-Arm 15pc Mini-Belt Sander Kit
18" x 3/8" Sanding Belt
18" x 1/2" Sanding Belt
18" x 3/4" Sanding Belt



MP-854
4.5" Heavy Duty Angle Grinder
5/8"-11 Arbor



Brazed Diamond Series

Features

- Premium quality industrial diamonds
- Outlasts coated abrasives 100x plus
- 3x Faster cutting and longer life than carbide grit
- 90% less sparks than abrasives during cutting
- Can be used dry or wet
- Brazed diamond cuts: A wide variety of material, from ferrous to most non-ferrous metals, most construction materials, concrete, granite, tile PVC, fiberglass, fiber cement board and more.



Brazed Diamond Type 27 Depressed Center Wheel

24-45130
4-1/2" Dia. - Course Grit 5/8-11 Arbor
24-45150
4-1/2" Dia. - Medium Grit 7/8" Arbor

24-40025
4" Dia. - Coarse Grit 7/8" Arbor
24-45025
4-1/2" Dia. - Coarse Grit 7/8" Arbor
24-40035
4" Dia. - Medium Grit 7/8" Arbor
24-45035
4-1/2" Dia. - Medium Grit 7/8" Arbor



Brazed Diamond Grinding Wheel

24-45330
4-1/2" Dia. Grinding Wheel - Medium Grit 7/8"-5/8" Arbor



Brazed Diamond Burrs - 20/25 Grit



24-99070
3/4" x 2-1/4"
1/4" Shank - Coarse Grit

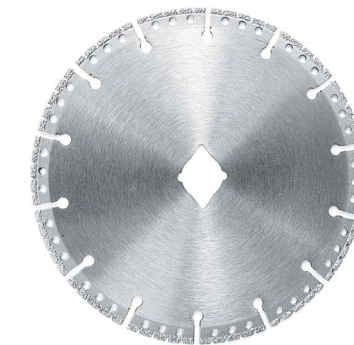
24-99061
5/8" x 2-3/4"
1/4" Shank - Coarse Grit

24-99501
5/8" x 3-1/2" x 3/8"
3/8" Harden Shank - Coarse Grit

24-99502
3/4" x 3-1/2"
3/8" Harden Shank - Coarse Grit

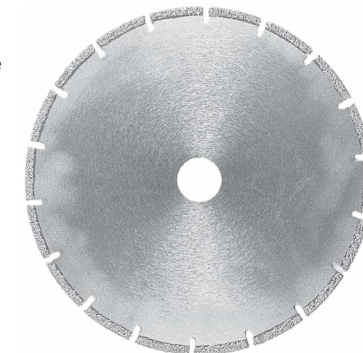
Brazed Diamond Saw Blades

These blades have been designed to cut a variety of materials including Ductile iron, ferrous, most non-ferrous metals, stone, concrete, asphalt, pvc pipe, plastic pipe, fiber cement board and most other construction materials.



24-32007
7" Demolition Blade
5/8" - Diamond Arbor
Coarse Grit

24-33045
4-1/2" Multi-Purpose Blade
7/8" - 5/8" Arbor
Medium Grit
24-33007
7" Multi-Purpose Blade
5/8" - Diamond Arbor
Medium Grit



24-31009
9" HD Demolition Blade
7/8" Arbor - Coarse Grit

Model	RPM	HP	Torque	Air Inlet Thread (N.P.T.)	Air Hose Size	Air Pressure (PSI)	Air Cons. (CFM)	Length	Weight (Lbs.)
MP-575	16,000	.5	-	1/4"	3/8"	90	4.2	14"	2.75
MP-601KIT-A	-	-	-	1/4"	3/8"	90	-	-	-
MP-601KIT-B	-	-	-	1/4"	3/8"	90	-	-	-
MP-854	11,000	1.3	-	1/4"	3/8"	90	4.2	9"	4
MP-7016	450	-	30 Ft-Lb	1/4"	3/8"	90	4.5	-	-
MP-7058	1,800	.38	-	1/4"	3/8"	90	13.7	7-1/4"	1.75
MP-7059	11,000	-	50 Ft-Lb	1/4"	3/8"	90	12.6	6-1/2"	1.50
MP-7074	11,000	-	50 Ft-Lb	1/4"	3/8"	90	12.6	6-1/2"	1.50
MP-7312	180	-	50 Ft-Lb	1/4"	3/8"	90	5	8-1/4"	1.50

Index

Index

Die Grinders

Features

- Heavy duty, lightweight construction for general high speed polishing and grinding
- Ball bearing construction for longer tool life
- Grooved handle design for firm grip, except SM-501
- Variable speed throttle for positive speed control
- Cylinder constructed of high quality steel
- Built-in adjustable air regulator, except SM-501
- Tools on this page come with a 90 day warranty.



SM-508
1/4" Mini Die Grinder

SM-512-9
1/4" Die Grinder
Rear Exhaust



SM-512
1/4" Die Grinder
Rear Exhaust



SM-522
1/4" Angle Die Grinder
Rear Exhaust, Grease
Fitting in Head



SM-512K
1/4" Die Grinder Kit

- Incl: 1 pc SM-512 (page 20)
1 pc 1/4" Collet (installed)
1 pc Optional 1/8" Collet
10 pcs Mounted Stones
1 pc Blow Case
2 pcs Wrench Set



SM-501
1/4" Die Grinder
Front Exhaust



SM-532
1/4" Die Grinder
Rear Exhaust



SM-545
1/4" High Torque Die Grinder
Rear Exhaust
Rubber Grip



Model	Speed (R.P.M.)	Collet Size	Air Inlet Thread (N.P.T.)	Air Hose Size	Air Pressure (PSI)	Air Cons. (CFM)	Length	Weight (Lbs.)
SM-501	22,000	1/4"	1/4"	3/8"	90	4	7"	1.50
SM-508	24,000	1/4"	1/4"	3/8"	90	3	5"	0.75
SM512	22,000	1/4"	1/4"	3/8"	90	4	6-3/4"	1.12
SM512E-9	22,000	1/4"	1/4"	3/8"	90	4	13"	2.75
SM512K	22,000	1/4"	1/4"	3/8"	90	4	6-3/4"	1.12
SM-522	22,000	1/4"	1/4"	3/8"	90	4	6-1/2"	1.00
SM-532	25,000	1/4"	1/4"	3/8"	90	4	6"	1.00
SM-545	4,500	1/4"	1/4"	3/8"	90	4	8"	2.00

Replacement Collets

- 1/8" Erickson type collet # 1000345
- 1/4" Erickson type collet # 1000302
- 1/8" Insert (Converts 1/4" collet to 1/8") #1000344

Die Grinders Heavy Duty and Speciality

Features

- Heavy duty, lightweight construction for general high speed polishing and grinding
- Ball bearing construction for longer tool life
- Built-in adjustable air regulator
- Variable speed throttle for positive speed control
- Cylinder constructed of high quality steel
- Six month warranty, see inside back cover



SM-550
1/4" 105° Angle Heavy Duty Angle Die Grinder
Removable Dead Handle, Grease Fitting in Head
Increased Horsepower for Tougher Jobs Rear Exhaust

SM-551-2
1/4" Heavy Duty Die Grinder
Front Exhaust



SM-552-2
1/4" Heavy Duty Die Grinder
Increased Horsepower for
Tougher Jobs, Front Exhaust



SM-517
1/8" Heavy Duty Micro Die Grinder
High Speed, Compact Design For
Detail Work, Rear Exhaust Routed
Away For Clean, Quiet Operation



SM-518
30mm Angle Micro Grinder
with M7 x Pitch 0.75mm
Spindle



MP-711
1/4" Die Grinder with Front Exhaust
Designed for Production Use



SM-524
1/4" 100° Gearless Angle Die Grinder
Ergonomically Designed Handle, Rear
Exhaust, One Piece Casing

Model	Speed (R.P.M.)	Collet Size	Air Inlet Thread (N.P.T.)	Air Hose Size	Air Pressure (PSI)	Air Cons. (CFM)	Length	Weight (Lbs.)
MP-711	20,000	1/4"	1/4"	3/8"	90	4	6-3/4"	2.1
SM-517	56,000	1/8"	1/8"	3/8"	90	2	5-1/4"	0.25
SM-518	23,000	-	1/4"	3/8"	90	4	6-1/4"	1.0
SM-524	25,000	1/4"	1/4"	3/8"	90	4	6-1/8"	1.12
SM-550	9,000	1/4"	1/4"	3/8"	90	4	8-1/4"	2.00
SM-551-2	20,000	1/4"	1/4"	3/8"	90	5	6-1/8"	1.50
SM-552-2	18,000	1/4"	1/4"	3/8"	90	5	7-1/4"	1.60

Drills

Features

- Ball bearing construction
- Muffled handle exhaust for quiet operation
- Planetary gearing for heavy duty use
- Lever trigger for easy start-stop
- Variable speed trigger
- All Drills equipped with Jacob's® Chucks
- Keyless chucks available



SM-709
3/8" Angle Drill
Grease Fitting in Head
Front Exhaust
(SA-1038 Chuck)

SM-709R
3/8" Reversible Angle Drill
Grease Fitting in Head
(SA-1038 Chuck)

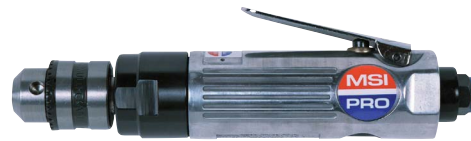


SM-502
3/8" High Speed Drill
(SA-1038 Chuck)



All Drills Available With Keyless Chuck
See page 24 for replacement Jacobs® Chucks and Keys

SM-710
3/8" Straight Drill
(SA-1038 Chuck)



Model	Chuck Size	Speed (R.P.M.)	Air Inlet Thread (N.P.T.)	Air Hose Size	Air Pressure (PSI)	Air Cons. (CFM)	Spindle Thread	Length	Weight (Lbs.)
SM-502	3/8"	22,000	1/4"	3/8"	90	4	3/8"-24	8-1/8"	1.50
SM-709	3/8"	1,900	1/4"	3/8"	90	4	3/8"-24	7-5/8"	2.50
SM-709R	3/8"	1,400	1/4"	3/8"	90	4	3/8"-24	8-1/4"	2.50
SM-710	3/8"	2,600	1/4"	3/8"	90	4	3/8"-24	8-1/2"	2.00

Cutting Tools

Body Saw

SG-0822
Air Body Saw
2 piece replacement blade set # 1301135



Cut-Off Tools

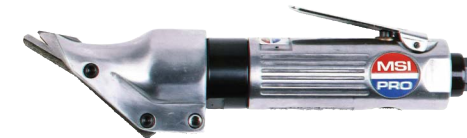
Features

- Spark guard rotates 360° for added safety
- Built-in speed regulator and contoured lever throttle
- Uses standard 3" diameter cut-off wheels

MP-530A
3" Angled
Cut-Off Tool



SG-0516
3" Cut-Off Tool
Chrome Plated Steel Guard



Nibbler

Features

- Cuts up to 16 gauge mild steel with no burr or deformed edges
- Cuts a tight 1/4" radius with great accuracy
- Adjustable die guide for forward, backward, right or left cutting
- Built in regulator for speed control



SM-213
Air Nibbler
Replacement punch #1301440
Replacement die #1301441
(punch and die will not fit older models)

Air Shears

Features

- Cuts aluminum, tin, plastic, mild steel and other metals up to 18 gauge thick with minimal edge distortion
- Replacement shear head assembly #20433



SM-204
Pistol Grip Metal Shear

SM-204S
Straight Metal Shear

Pistol Drills

Features

- Ball bearing construction
- Muffled handle exhaust for quiet operation
- Planetary gearing for heavy duty use
- Variable speed trigger
- Aluminum pistol grip handle, specially designed for Automotive and Industrial use
- All drills equipped with Jacobs® Chucks
- Keyless chucks available



MP-7058
1/4" Drill
Compact Series



SM-701
3/8" Drill
(SA-1038 Chuck)



SM-705
3/8" Reversible Drill
(SA-1038 Chuck)



SM-704
1/2" Reversible Drill
(SA-1212 Chuck)

Keyless Chucks Are Available for All Drills, See page 24 for replacement Chucks and Keys.

Model	Chuck Size	Speed (R.P.M.)	Air Inlet Thread (N.P.T.)	Air Hose Size	Air Pressure (PSI)	Air Cons. (CFM)	Spindle Thread	Length	Weight (Lbs.)
SM-701	3/8"	2,200	1/4"	3/8"	90	4	3/8"-24	6-1/2"	2.25
SM-704	1/2"	500	1/4"	3/8"	90	4	3/8"-24	7"	4.00
SM-705	3/8"	1,800	1/4"	3/8"	90	4	3/8"-24	6-1/2"	3.00
MP-7058	1/4"	1,800	1/4"	3/8"	90	4	-	7-1/4"	1.80

Model	Speed (R.P.M.)	Wheel Size	Spindle Thread	Air Inlet Thread (N.P.T.)	Air Hose Size	Air Pressure (PSI)	Air Cons. (CFM)	Length	Weight (Lbs.)
MP-530A	15,000	3"	M-6	1/4"	3/8"	90	4	8-1/4"	2.10
SM-204	2,800	N/A	N/A	1/4"	3/8"	90	4	8-1/4"	2.75
SM-204S	2,200	N/A	N/A	1/4"	3/8"	90	4	10"	2.25
SG-0516	20,000	3"	M-6	1/4"	3/8"	90	4	8"	1.50
SG-0822	10,000	N/A	N/A	1/4"	3/8"	90	4	9-1/4"	2.00
SM-213	3,500	N/A	N/A	1/4"	3/8"	90	4	7"	2.00

Index

Index

Hammers/Needle Scalers and Flux Chippers

Features

- Ideal for front end and heavy duty automotive work
- Heat treated hardened steel barrel and piston for longer tool life
- Built-in variable speed trigger and regulator for precise control
- Standard spring retainer
- Replacement spring retainer # SA 1203
- See page 24 for optional retainers and needle scaler attachment

SM-28143
Pistol Grip
Needle Scaler



Model	Blows Per Minute	Stroke Length	Air Inlet Thread (N.P.T.)	Air Hose Size (ID)	Air Pressure (PSI)	Air Cons. (CFM)	Overall Length	Weight (Lbs.)
SM-28143	4,000	1.06"	1/4"	3/8"	90	10.0	13 3/4"	6.00

SG-0101R (Round Shank)
Short Air Hammer
with SA-1203 retainer



SG-0204R (Round Shank)
Medium Air Hammer with
SA-1203 retainer



SG-2711R (Round Shank)
Heavy Duty Short Hammer
with SA-1203A double coil retainer



SG-2715R (Round Shank)
Heavy Duty Medium Hammer
with SA-1203A double coil retainer

SG-0304R (Round Shank)
Long Air Hammer with
SA-1203 retainer



See page 23 for replacement chisel sets, retainers, and needle attachment

Model	Bore Size	Blows Per Minute	Stroke Length	Shank Opening (inch)	Air Inlet Thread (N.P.T.)	Air Hose Size	Air Pressure (PSI)	Air Cons. (CFM)	Length	Weight (Lbs.)
SG-0101R	3/4"	4,500	1-5/8"	.401"	1/4"	3/8"	90	4	5-1/4"	3.00
SG-0204R	3/4"	3,000	2-5/8"	.401"	1/4"	3/8"	90	4	6-3/4"	3.50
SG-0304R	3/4"	2,200	3-5/8"	.401"	1/4"	3/8"	90	4	9"	4.00
SG-2711R	3/4"	3,000	2-5/8"	.401"	1/4"	3/8"	90	4	6-3/4"	2.50
SG-2715R	3/4"	2,200	3-5/8"	.401"	1/4"	3/8"	90	4	8-3/4"	3.50

SG-9121NS Needle Scaler



SG-0315NS Needle Scaler



SG-9121 Flux Chipper



SG-0315 Flux Chipper



(SA-9121C Replacement Chisel)
(SA-0315N 19 Pc. Replacement Needle Set)

(SA-0315C Replacement Chisel)
(SA-0315N 19 Pc. Replacement Needle Set)

Model	Blows Per Minute	Stroke Length	Air Inlet Thread (N.P.T.)	Air Hose Size	Air Pressure (PSI)	Air Cons. (CFM)	Length	Weight (Lbs.)
SG-0315NS	4,000	1-7/8"	1/4"	3/8"	90	5.3	16 3/8"	5.75
SG-0315	4,000	1-7/8"	1/4"	3/8"	90	5.3	13"	4.00
SG-9121NS	4,600	1-1/8"	1/4"	3/8"	90	4	16 1/8"	6.25
SG-9121	4,600	1-1/8"	1/4"	3/8"	90	4	14-1/2"	4.50

Screwdrivers

Features

- Excellent power to weight ratio does tough jobs with minimal operator fatigue
- Aluminum pistol grip handle with contoured trigger throttle
- Quick change hex collet
- All models are reversible
- See below for optional springs

MP-7074
Screwdriver
with quick change
chuck Compact Series



SM-802
1/4" Air Screwdriver
Adjustable Clutch
Equipped with standard
black spring (45-115 in/lbs) 1800 RPM



SM-882
1/4" Air Screwdriver
External Torque Adjustment
1,800 RPM
SM-883
1/4" Air Screwdriver
External Torque Adjustment
1,800 RPM



SM-804
1/4" Air Screwdriver
Positive Clutch
1800 RPM



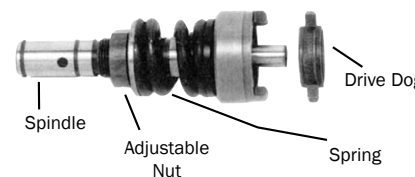
*Torque listed is with optional springs.

Model	Hex Chuck Size	Speed (R.P.M.)	Torque (In/Lbs)	Air Inlet Thread (N.P.T.)	Air Hose Size	Air Pressure (PSI)	Air Cons. (CFM)	Length	Weight (Lbs.)
MP-7074	1/4"	11,000	50	1/4"	3/8"	90	12.6	6-1/2"	1-1/2
SM-802	1/4"	1,800	25-145*	1/4"	3/8"	90	4	7"	2.50
SM-803	1/4"	800	25-145*	1/4"	3/8"	90	4	8-1/2"	2.75
SM-804	1/4"	1,800	115	1/4"	3/8"	90	4	7"	2.50
SM-806	1/4"	800	145	1/4"	3/8"	90	4	8-1/2"	2.75
SM-882	1/4"	800	45-145	1/4"	3/8"	90	4	10"	3.25
SM-883	1/4"	1,800	45-145	1/4"	3/8"	90	4	10"	3.25

Adjusting Springs of three different tensions are available for wider adjustment of torque. Fits all adj. clutch screwdrivers except: SG-0909, SG-0912 & SG-0913.

<p>Light (Green)</p> <p>80237G (25-85 in/lbs) Optional</p>	<p>Medium (Black)</p> <p>80237B (45-115 in/lbs) Standard</p>	<p>Strong (Yellow)</p> <p>80237Y (45-145 in/lbs) Optional</p>
--	--	---

Adjustable Clutch Mechanism for all adjustable clutch screwdrivers
Tighten Adjusting Spring for higher torque



SM-842
Air Screwdriver
Adjustable Clutch
1,800 RPM



SM-843
Air Screwdriver
Adjustable Clutch
- 800 RPM
Comes equipped with standard
black spring (45-115 in/lbs)



SG-0909
Air Screwdriver
Adjustable Clutch



MP-3011
Auto Air Shut Off Screwdriver
External Adjustable Clutch
22 TO 52 IN/LBS



SG-0912
Auto Air Shut Off Screwdriver
External Adjustable Clutch
1.5 TO 8 IN/LBS



Model	Hex Chuck Size	Speed (R.P.M.)	Torque (In/Lbs)	Air Inlet Thread (N.P.T.)	Air Hose Size	Air Pressure (PSI)	Air Cons. (CFM)	Overall Length	Weight (Lbs.)
SG-0909	1/4"	1,500	10-30	1/4"	3/8"	90	4	8-1/4"	1.50
SM-842	1/4"	1,800	25-145*	1/4"	3/8"	90	4	10"	2.50
SM-843	1/4"	800	25-145*	1/4"	3/8"	90	4	11"	2.75
SG-0912	1/4"	1,000	1.5-18	1/4"	3/8"	90	4	9"	1.50
MP-3011	1/4"	1,100	22-52	1/4"	3/8"	90	5	10-3/4"	1.80

*Torque listed is with optional springs.

Impact Wrenches

Features

- Built-in air regulator for positive speed and torque control
- Single handed reverse operation
- Ring socket retainer allows for rapid socket changes
- Bumper guards for added protection



SM-3718
1/4" Composite Impact Wrench



MP-7059
1/4" Impact Compact Series

Impact Wrenches



SG-0785
1/2" Impact Wrench Pin Clutch



SM-50110
1/2" Composite Impact Wrench

SG-0785L
1/2" Impact Wrench With 2" Anvil



SM-401-A
3/8" Impact Wrench Single Hammer Butterfly



SG-0784
3/8" Impact Wrench Pin Clutch



SM-37194
3/8" Impact Wrench

Forward & Reverse Switch

SG-0740
3/4" Impact Wrench Single Hammer



SG-0740L
3/4" Impact Wrench With 4-1/2" Extended Anvil

SG-0750
3/4" Impact Wrench Pin Clutch



SG-0750L
3/4" Impact Wrench with 4-1/2" Extended Anvil Pin Clutch



SM-403
1/2" Impact Wrench Single Hammer



SG-0716
1/2" Impact Wrench Pin Clutch



SG-0718
1/2" Impact Wrench Heavy Duty Model Steel Case Twin Hammer



SG-0786
3/4" Impact Wrench Pin Clutch



SM-6074
3/4" Composite Impact Wrench



SG-0787
1" Impact Wrench Pin Clutch

SM-403L
1/2" Impact Wrench With 1" Extended Anvil

SG-0716L
1/2" Impact Wrench With 2" Extended Anvil

SG-0718L
1/2" Impact Wrench With 6" Anvil

SG-0786-L
3/4" Impact Wrench With 6" Anvil

SG-0787L
1" Impact Wrench With 6" Anvil

Model	Square Drive Anvil	Speed (R.P.M.)	Torque (Ft/Lbs)	Bolt Capacity	Air Inlet Thread (N.P.T.)	Air Hose Size	Air Pressure (PSI)	Air Cons. (CFM)	Overall Length	Weight (Lbs.)
SM-3718	1/4"	12,500	35	5/16"	1/4"	3/8"	90	2	7"	2
MP-7059	1/4"	11,000	50	1/4"	1/4"	3/8"	90	12.6	6-1/2"	1.5
SM-401-A	3/8"	10,000	75	3/8"	1/4"	3/8"	90	3	5-1/2"	2.00
SG-0784	3/8"	9,000	160	1/2"	1/4"	3/8"	90	4	5-3/4"	2.75
SM-37194	3/8"	12,000	280	1/2"	1/4"	3/8"	90	7.4	6 1/2"	2.5
SM-403	1/2"	7,000	230	5/8"	1/4"	3/8"	90	4	7"	5.00
SG-0716	1/2"	7,000	280	5/8"	1/4"	3/8"	90	4	7"	5.00
SG-0718	1/2"	7,000	400	5/8"	1/4"	3/8"	90	4	7-1/2"	6

Model	Square Drive Anvil	Speed (R.P.M.)	Torque (Ft/Lbs)	Bolt Capacity	Air Inlet Thread (N.P.T.)	Air Hose Size	Air Pressure (PSI)	Air Cons. (CFM)	Overall Length	Weight (Lbs.)
SG-0785	1/2"	7,000	400	5/8"	1/4"	3/8"	90	4.2	7-1/2"	5.25
SM-50110	1/2"	7,500	950	3/4"	1/4"	3/8"	90	10.2	7-3/8"	4.25
SG-0740	3/4"	5,000	500	1"	1/4"	3/8"	90	8	9-1/2"	10.50
SG-0750	3/4"	4,600	700	1"	1/4"	3/8"	90	10	9-3/4"	10.25
SG-0786	3/4"	4,500	850	1-1/2"	1/4"	3/8"	90	7	9-3/4"	10.25
SM-6074	3/4"	7,500	1,300	1"	1/4"	3/8"	90	9.5	8 1/4"	7
SG-0787	1"	3,500	1,300	1-1/2"	1/4"	3/8"	90	7	9-3/4"	11

Ratchet Wrenches

SG-0719
1/4" Stubby
Ratchet Wrench



SM-30
3/8" Ratchet Wrench
SM-31
1/2" Ratchet Wrench



SG-0720
3/8" Stubby
Ratchet Wrench



SG-0735
1/2" Heavy Duty Ratchet Wrench



MP-7312
1/2" Adjustable Head Ratchet



MP-7016
Thru-Hole Ratchet
Wrench Kit with
1/4", 3/8", 7/16" & 1/2"
Socket plus 3/8" adapter



Model	Square Drive Anvil	Speed (R.P.M.)	Torque (Ft/Lbs)	Bolt Capacity	Air Inlet Thread (N.P.T.)	Air Hose Size	Air Pressure (PSI)	Air Cons. (CFM)	Overall Length	Weight (Lbs.)
MP-7016	-	450	30	-	1/4"	3/8"	90	4.5	8-1/2"	1.3
MP-7312	1/2"	180	50	-	1/4"	3/8"	90	5	8-1/4"	1.5
SG-0719	1/4"	250	20	1/4"	1/4"	3/8"	90	3	7-1/2"	1.25
SG-0720	3/8"	250	20	5/16"	1/4"	3/8"	90	3	7-1/2"	1.25
SM-30	3/8"	150	45	3/8"	1/4"	3/8"	90	4	10"	2.50
SM-31	1/2"	150	45	1/2"	1/4"	3/8"	90	4	10"	2.50
SG-0735	1/2"	150	90	1/2"	1/4"	3/8"	90	5	14-3/8"	4.50

Sanders



SM-604-5
5" Random Orbital Sander
(Replacement 5" Pad #60327-5)



SM-604-6
6" Random Orbital Sander
(Replacement 6" Pad #60327-6)

SM-605
5" Random Orbital Sander
(Replacement 5" Pad #1603340)

Dual Action Sanders

Features

- Constant orbital stroke for fine finishing
- Heavy duty ball bearing construction for reduced vibration performance
- Built-in air regulator
- Positive grip handle and rubber housing cover for non-slip sanding and reduced vibration
- Balanced counterweight design provides orbital or rotary action



SG-0416
3-2/3" x 6-1/2" Jitterbug Sander
(Replacement Pad #102143)

SG-0420
Dual Action Sander
(6" Replacement Pad 1601342)



Model	Pad Size	Speed (R.P.M.)	Pad Size	Air Inlet Thread (N.P.T.)	Air Hose Size	Air Pressure (PSI)	Air Cons. (CFM)	Length	Weight (Lbs.)
SM-604-5	5"	10,000	5/8"-11	1/4"	3/8"	90	8	5-3/4"	2.75
SM-604-6	6"	10,000	5/8"-11	1/4"	3/8"	90	8	6-1/4"	3.00
SG-0416	2-2/3" x 6-1/2"	8,000	5/8"-11	1/4"	3/8"	90	9	7-1/8"	4.50
SG-605	5"	10,000	5/8"-11	1/4"	3/8"	90	8	6-1/2"	2.25
SG-0420	6"	10,000	5/8"-11	1/4"	3/8"	90	5	8-3/4"	4.00

Wet Sanders

SM-209
3" Wet Polisher



SM-209-4
4" Wet Polisher

SM-209-4D
4" Wet Polisher
Equipped w/dial air regulator

1603437
3" Replacement Pad
1603444
4" Replacement Pad



Model	Pad Size	Speed (R.P.M.)	Arbor Size	Air Inlet Thread (N.P.T.)	Air Hose Size	Air Pressure (PSI)	Air Cons. (CFM)	Length	Weight (Lbs.)
SM-209	3"	4,500	5/8"-11	1/4"	3/8"	90	10	9-1/4"	4.75
SM-209-4	4"	4,500	5/8"-11	1/4"	3/8"	90	10	9-1/4"	4.75

Sanders & Polishers



SG-0402
Hi-Speed Sander With
3 Piece Pad Set
(Replacement Pad Set
1601231 3-Piece)

SG-0470
7" Angle Sander
(Replacement Pad
1601943)



SG-0472
7" Angle Polisher



SG-0430
Straight Line Sander Dual Piston
(109029 Replacement Pad)



Features

- Automatic release throttle lever
- Heavy duty construction
- Built-in regulator for positive speed control, except SG 0430

Model	Speed (R.P.M.)	Pad Size	Spindle Thread	Air Inlet Thread (N.P.T.)	Air Hose Size	Air Pressure (PSI)	Air Cons. (CFM)	Length	Weight (Lbs.)
SG-0402	18,000	3", 4-1/2", 5-1/2"	7/16"-20	1/4"	3/8"	90	4	7-1/2"	2.25
SG-0430	3,000	2-1/2" X 15-3/4"	N/A	1/4"	3/8"	90	8	16"	6.25
SG-0470	4,500	7"	5/8"-11	1/4"	3/8"	90	10	16"	4.00
SG-0472	2,500	7"	5/8"-11	1/4"	3/8"	90	10	16"	4.00

Index

Index

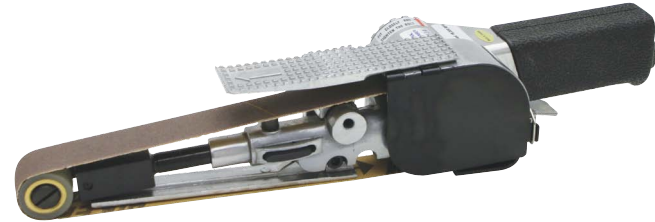
Mini-Belt Sanders

Features

- Small, lightweight, industrial pneumatic mini-belt sanders that help sand all jobs and all materials with amazing speed and ease...level surfaces, contours, even inside corners.
- Rear exhaust directs air away from work surface
- Equipped with Silencer
- Standard accessories: Two sanding belts for each model and hex key wrench
- Hot spots are eliminated due to the extra belt length.
- These ergonomic, lightweight, highly efficient tools greatly reduces arm fatigue.
- The swing-position grip is 360° adjustable for up, down, and all-around positioning for operator comfort and convenience.



SM-606-2
1/4" X 13" Belt Size



SM-610-2
3/8" X 13" Belt Size



MP-575
3-Arm 15pc Mini-Belt Sander Kit
18" x 3/8" Sanding Belt
18" x 1/2" Sanding Belt
18" x 3/4" Sanding Belt



SM-620-2
3/4" X 20-1/2" Belt Size
with Rubber Pulley Assembly
SM-620-2S
3/4" X 20-1/2" Belt Size
with Steel Pulley Assembly



SM-624
1/2" X 24" Belt Size



SM-634
3/4" X 20-1/2" Belt Size

Model	Speed (R.P.M.)	Belt Size	Max Reach	Air Inlet Thread (N.P.T.)	Air Pressure (PSI)	Air Cons. (CFM)	Length	Weight (Lbs.)
MP-575	16,000	3 Sizes	-	1/4"	90	4.2	14-1/4"	6.25
SM-606-2	16,000	1/4" x 13"	4-3/8"	1/4"	90	4	10-3/4"	1.70
SM-610-2	16,000	3/8" x 13"	4-3/8"	1/4"	90	4	10-3/4"	1.70
SM-624	16,000	1/2" x 24"	9-7/8"	1/4"	90	4	16-3/8"	2.10
SM-620-2	16,000	3/4" x 20-1/2"	6-3/4"	1/4"	90	4	13-3/4"	3.10
SM-634	16,000	3/4" x 20-1/2"	6-3/4"	1/4"	90	4	15-1/2"	3.10

Vertical Grinders

Features

- Vertical grinders feature a gearless design for more power and trouble-free operation.
- Equipped with overspeed shutoff device working independent of the governor that shuts down tool if it overspeeds.
- Features high force corrosion-resistant governor and unitized motor design.
- Hardened steel end plates and liner for excellent wear resistance



SM-550-2
5/8"-11 Spindle 105° Angle
Heavy Duty Angle Grinder
Rear Exhaust

SM-555-3
5/8"-11 Spindle 90° Angle
Heavy Duty Angle Grinder
Rear Exhaust



SG-0522
7" Angle Grinder

Model	Wheel Size	Speed (R.P.M.)	Spindle Thread	Air Inlet Thread (N.P.T.)	Horse Power	Air Hose Size (ID)	Air Pressure (PSI)	Air Cons. (CFM)	Overall Length	Weight (Lbs.)
SG-7925	7"	7,000	5/8"-11	1/4"	2.25	3/8"	90	36.0	13 1/2"	8.50
SG-9925	9"	6,000	5/8"-11	1/4"	3.8	3/4"	90	48	11"	12.50
SM-3831	4"	17,000	M12 x 0.5P	1/4"	0.7	3/8"	90	4.0	15 3/4"	4.00

Model	Speed (R.P.M.)	Wheel Size	Spindle Thread	Air Inlet Thread (N.P.T.)	Air Hose Size	Air Pressure (PSI)	Air Cons. (CFM)	Length	Weight (Lbs.)
SG-0519	12,000	4"	3/8"-24	1/4"	3/8"	90	4	9"	4.00
SG-0522	7,000	7"	5/8"-11	3/8"	3/8"	90	8	13-1/2"	6.50
MP-854	11,000	4.5"	5/8"-11	1/4"	3/8"	90	4.2	9"	4.00
MSI-911	10,000	5"	5/8"-11	3/8"	3/8"	90	11	10-1/4"	4.50

Angle Grinders

Features

- Powerful motor for maximum performance
- Lightweight aluminum housing to reduce operator fatigue
- Designed to handle a variety of applications from fine deburring operations to heavy grinding work
- Equipped with governor to slow down tool if it over-speeds



SM-3831
4" Extended
Corner Grinder



SG-0519
4" Angle Grinder



MSI-911
5" Heavy Duty Angle Grinder



MP-854
4.5" Heavy Duty Angle Grinder



SG-7925
7" Vertical Grinder



SG-9925
9" Vertical Grinder

Miscellaneous Tools

Spray Guns

Features

- High-performance production spray gun handles most types of paints and finishing materials
- Designed for professional use



SG-1052



SG-1046
Replaces Devilbiss JGA



SG-1054
H.V.L.P.
See Accessory Page
for Optional Nozzles

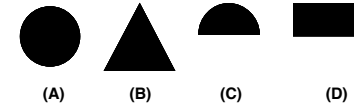
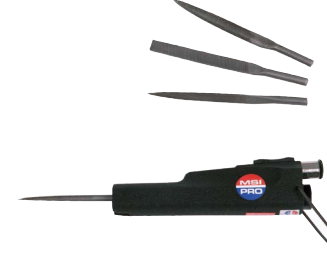
Model	Cup Capacity	Nozzle Tip (mm)	Fluid Inlet (N.P.T.)	Air Inlet Thread (N.P.T.)	Air Hose Size	Air Pressure (PSI)	Air Cons. (CFM)	Height	Weight (Lbs.)
SG-1054	0.6 L	1.4	3/8"	1/4"	3/8"	15-43	3	15-1/2"	2.25
SG-1046	1 L	1.5	3/8"	1/4"	3/8"	50-70	8	11-1/2"	2.5
SG-1052	0.3 L	1.8	3/8"	1/4"	3/8"	30-50	4	9"	1.00

Air File

Air File Features

- Steel die cast body
- Small and easy to maneuver
- Excellent for filing, chamfering and other jobs
- Supplied with 4 styles of files and a hex key (Files: Flat Bastard, Rat Tail, Triangular Taper, Half Round,)

SG-0825
Air File



Replacement Files For SG0825

082523	A	Rat Tail
082524	B	Triangle Taper
082525	C	Half Round
082526	D	Flat Bastard

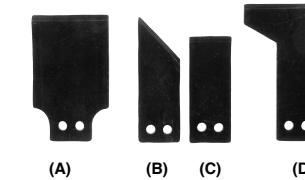
Model	Strokes Per Minute	Stroke Length	Max. File Diameter	Air Inlet Thread (N.P.T.)	Air Hose Size	Air Pressure (PSI)	Air Cons. (CF/Stroke)	Length	Weight (Lbs.)
SG-0825	3,700	1/8"	1/4"	1/4"	3/8"	90	5	9-1/4"	2.50
SPT-101	4,800	1/8"	N/A	1/4"	3/8"	90	4.5	9-3/4"	1.50

Gasket Scraper

Gasket Scraper Features

- Steel body with knurled grip area
- Well balanced for easy maneuverability
- Includes standard straight blade (1" wide) P/N 1201919
- Includes inline air regulator
- Easy to control action due to 1/8" stroke length
- Optional blades for specialty applications

SPT-101
Gasket Scraper



Gasket Scraper Blade

Optional	A	1201923
Optional	B	1201919
Standard	C	1201917
Optional	D	1201918



SG-0692 Air Punch

- Unique 2 in 1 metal working tool
- Head swivels 360° for versatile operation
- Crimp up to 14 gauge sheet steel or punch clean holes for welding applications: Hole size 3/16"
- Muffled handle exhaust directs air away from work surface
- Replacement punch assembly # SG-0692PA



SG-9908 Large Cartridge Caulking Gun

- Uses 2-5/8" diameter cartridge
- Built-in regulator in the housing
- Aluminum construction

Model	Cutting Capacity (Steel)	Punch Diameter	Air Inlet Thread (N.P.T.)	Air Hose Size	Air Pressure (PSI)	Air Cons. (CFM)	Length	Weight (Lbs.)
SG-0692	14 guage	3/16"	1/4"	3/8"	90	4	10"	4.00
SG-9908	N/A	N/A	1/4"	3/8"	90	N/A	17-1/2"	2.75

Air/Hydraulic Riveters

Features

- Ideal for riveting duct work, aluminum, fiberglass, masonite, siding and automotive applications
- Continuous production capability
- Sets blind aluminum rivets up to 3/16" diameter
- Quick release air valve
- Up to 1,600 lbs. of pull
- Comes with 3/32", 1/8", 5/32" and 3/16" nose-pieces
- Not to be used with stainless steel rivets



SG-0810
Air Riveter
Replacement Jaw
Set 1300908

SM-115C1
Composite
Air Riveter



Features

- Faster, more powerful
- Includes 3/32", 1/8", 5/32", 3/16", 7/32" and 1/4" nosepieces
- Up to 3,500 lbs of pull for tough jobs
- Not to be used with stainless steel rivets

Model	Traction Power (Lbs)	Rivet Capacity	Air Inlet Thread (N.P.T.)	Air Hose Size (ID)	Air Pressure (PSI)	Overall Length	Weight (Lbs.)
SM-115C1	3,500	1/4", 3/16", 5/32", 1/8"	1/4"	3/8"	90	13"	3.50

Model	Traction Power (LBS)	Rivet Capacity	Air Inlet Thread (N.P.T.)	Air Hose Size	Air Pressure (PSI)	Air Cons. (CF/Stroke)	Weight (Lbs.)
SG-0810	1,600	3/16"	1/4"	3/8"	90	0.04	3.3

Tool Kits

Features

- Protects and organizes accessories
- Convenient, easy to carry
- Kits include professional tools featured in this catalog with accessories.
- Other kits available on request



MP-601KIT-A
6pc Set - Includes Motor, Jig Saw, Drill, Circle Hole Cutter, Sander & Shear Multi-Function Tools

MP-601KIT-B
3pc Set - Includes Motor, Die Grinder & Cut Off Tool Multi-Function Tools



MP-575
3-Arm 15pc Mini-Belt Sander Kit
18" x 3/8" Sanding Belt
18" x 1/2" Sanding Belt
18" x 3/4" Sanding Belt



SG-1222 Kit
Wonder Gun Kit Two-In-One Blow/Cleaning Gun

- Incl:
- | | |
|------|--------------------|
| 1 Pc | Two Way Wonder Gun |
| 5 Ft | Standard Hose |
| 1 Pc | Bag |
| 1 Pc | Upholstery Tool |
| 1 Pc | Crevice Tool |
| 1 Pc | Extension Tool |

All Nozzles, Tools and Brushes are manufactured from break-resistant neoprene and plastics. Replacement Hose is of industrial grade crush proof quality.



SM-512K
1/4" Die Grinder Kit

- Incl:
- | | |
|--------|-------------------------|
| 1 pc | SM-512 (page 11) |
| 1 pc | 1/4" Collet (installed) |
| 1 pc | Optional 1/8" Collet |
| 10 pcs | Mounted Stones |
| 1 pc | Blow Case |
| 2 pcs | Wrench Set |

Accessories



SG-1063
Air Blow Gun



SA-1205
Needle Scaler Attachment for Air Hammers



Air Hose Assembly

SG-2016-25

3/8" I.D. X 25'

SG-2016-50

3/8" I.D. X 50'

250 psi capacity,

-10° F to 150° F

RMA Class B (Medium-High oil resistant tube and cover) Spiral synthetic yarn reinforced. Red is standard, other colors available.



G-102
Quick Change Retainer



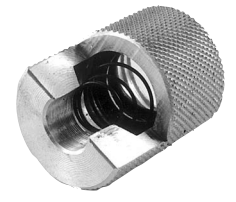
SA-1203
Standard Retainer



SA-1203 A
Double Coil Retainer



SA-1203 B
Beehive Retainer



SA-1201
Safety Retainer



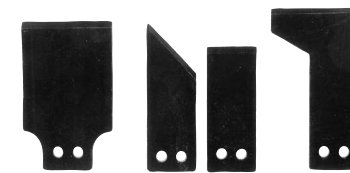
SG-1304
4 PC Chisel Set
Chisel Length 5"



SG-1306
6 PC Chisel Set
Chisel Length 5"



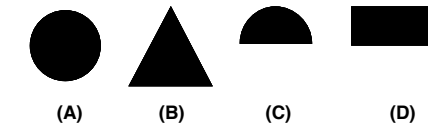
SG-1309
9 PC Chisel Set
Long Chisel Length 6-7/8"
Short Chisel Length 5"



(A) (B) (C) (D)

Gasket Scraper Blade

- | | | |
|----------|---|---------|
| Optional | A | 1201923 |
| Optional | B | 1201919 |
| Standard | C | 1201917 |
| Optional | D | 1201918 |



Replacement Files For SG0825

- | | | |
|--------|---|----------------|
| 082523 | A | Rat Tail |
| 082524 | B | Triangle Taper |
| 082525 | C | Half Round |
| 082526 | D | Flat Bastard |



RL-214

2" Roll Lock Arbor
For Twist On Sanding Discs

Index

Index

Accessories



Vacuum Pad
60334-5 5" pad
60334-6 6" pad
Call MSI-PRO for Hook & Loop Pads



Standard Pad
60327-5 5" pad
60327-6 6" pad



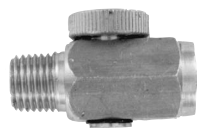
1601231
3 Piece Pad Set
(3", 4-1/2", 5-1/2")
for SG-0402 Sander
601229 4-1/2"
Pad Only



1601342
6" Pad for
SG-0420 D.A.
Sander



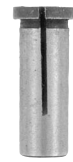
7" Pad
SG-0470 Sander
and SG-0472
Polisher



SG-9052
Air Regulator
(Brass)



G-301
Mini Oiler
(1/4" NPT Brass
and Acrylic)



1000344
1/8" Insert
(For 1/4" die grinders)



1000302
1/4" Collet
1000345 —
1/8" Collet

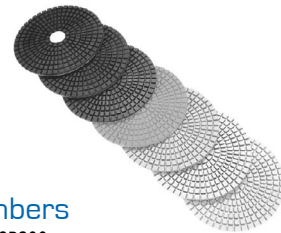
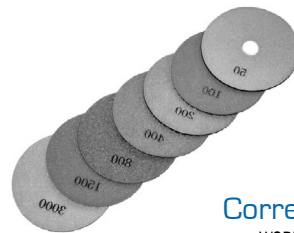


Spray Tips For 17007 HVL
17007NK14 1.4 mm tip
17007NK17 1.7 mm tip
17007NK20 2.0 mm tip

Wet Sander Pads

Features

- With our 3.5mm thickness, these pads are more durable than regular pads
- Color-Coded for easy identification
- Flexibility allows contour to the workpiece
- Maximum speed rating is 4,500 rpm
- Only used in wet application



Corresponding Item Numbers

WSP50, WSP100, WSP200, WSP400, WSP800,
WSP1500, WSP3000, WSPBUFF, WSPBUFFWGT
Seven and Nine Piece Kit Item Numbers:
WSP7KIT (7 Piece), WSP9KIT (9 Piece)

Jacobs® Chucks



HEAVY DUTY	Model Number	Capacity Range				Mount Thread	Key No.	Dimensions						Wt. Ea. Oz.
		Minimum		Maximum				Closed Length		Open Length		Sleeve Dia.		
		in	mm	in	mm			in	mm	in	mm	in	mm	
1/4" CAPACITY KEYED CHUCKS														
	SA 1010	0.025	0.7	0.250	6.5	3/8-24	KSA1038	2.04	5.18	1.57	39.9	1.25	31.8	3.5
3/8" CAPACITY KEYED CHUCKS														
	SA 1038	0.063	1.6	0.375	10	3/8-24	KSA1038	2.35	59.7	1.85	47.0	1.28	32.5	6
✓	SA 2038	0.063	1.6	0.375	10	3/8-24	KSA2038	2.52	64.0	2.06	52.3	1.43	36.3	8
1/2" CAPACITY KEYED CHUCKS														
	SA 1212	0.078	2.0	0.500	13	3/8-24	KSA1012	2.86	72.7	2.23	56.7	1.61	40.9	11
✓	SA 2212	0.078	2.0	0.500	13	3/8-24	KSA2012	3.13	79.5	2.43	61.8	1.79	45.5	16
	SA 1012	0.078	2.0	0.500	13	1/2-20	KSA1012	2.84	72.2	2.23	56.7	1.61	40.9	11
✓	SA 2012	0.078	2.0	0.500	13	1/2-20	KSA2012	3.13	79.5	2.43	61.8	1.79	45.4	15
3/8" CAPACITY KEYLESS CHUCKS														
	SA 2500	0.063	1.6	0.375	10	3/8-24	KEYLESS	2.44	62.0	2.10	53.4	1.61	40.9	5.6
✓	SA 2525	0.063	1.6	0.375	10	3/8-24	KEYLESS	2.44	62.0	2.10	53.4	1.67	42.5	8
1/2" CAPACITY KEYLESS CHUCKS														
✓	SA 2550	0.078	2.0	0.500	13	3/8-24	KEYLESS	2.81	71.4	2.60	66.0	1.67	42.5	11

Operation and Maintenance

Air Regulators

Clean, dry, lubricated air at the proper pressure is the most important requirement for proper operation of air tools. MSI-PRO tools are designed to operate at 90 PSI unless otherwise specified.

Moisture Separators

On installations where the piping system does not provide clean, dry air, the use of filters at hose connection points is recommended. A good filter, kept properly drained, will remove nearly all entrained water whereas a poor one is practically useless. Most filters do not have adequate water storage capacity and, unless provided with an auxiliary storage receiver or automatic trap, soon cease to function.

Strainers

Many tools are provided with air strainers. To eliminate air restriction these strainers must be kept clean and free of obstructions. Strainers or filters should be used at each hose outlet, particularly where pipe lines are old or are used intermittently.

Lubrication

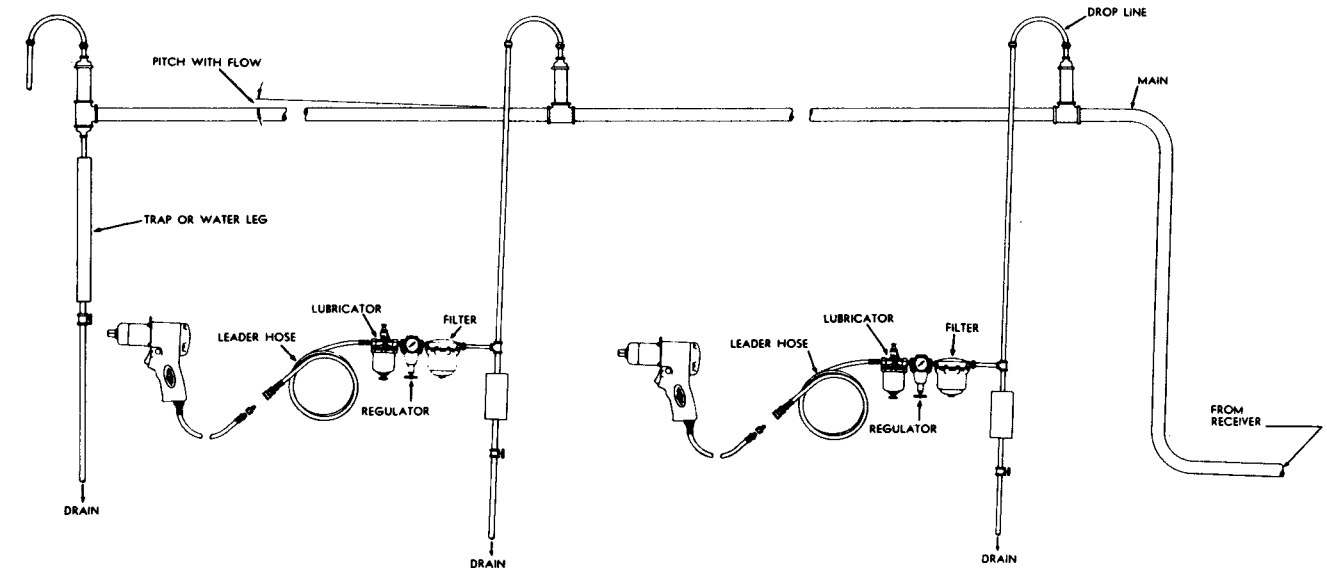
Many pneumatic tools, because of weight and space limitations, do not contain built-in lubricators. With such tools air line lubricators must always be used and their use is recommended with all air tools.

Moisture Elimination

The amount of moisture carried by compressed air varies with the temperature. As the temperature drops after compression, water is precipitated. In order to eliminate as much water as possible, compressors should be equipped with intercoolers, aftercoolers, and full size receivers. These should be kept drained and in good working condition.

Compressor Intake

Locate the intake to obtain the coolest, driest and cleanest air available. Intakes should be of ample size and as direct as possible. Avoid steam pipes, escaping steam and dusty or wet locations (as near roofs, floors, ground, etc.) When practical, take air from out-of-doors on the north side of the building. Provide proper screening and protection. Intake filters of suitable size should be used.



Piping System

Air mains and lines should be large enough to avoid excessive pressure loss under conditions of maximum flow.

In air lines, as in aftercoolers, water is continually precipitated as the air cools. For this reason pipe lines should be provided with a means of draining or trapping this water before it reaches the hose outlets.

It is advisable to pitch the mains in the direction of air flow so that both gravity and air flow will carry the water to traps or water legs located at frequent intervals. These should be drained regularly and never allowed to become full and inoperative. Use of automatic traps will eliminate manual draining and the possibility of traps becoming full. However, traps which drain to sewers can waste a considerable amount of air unless regularly inspected and kept in good working order.

Provision for quick and positive inspection of operation and for leakage should be made when traps are installed. Three-way cocks or stop and waste cocks in the drains are usually provided for this purpose.

To aid in preventing condensed moisture from reaching the tools, down pipes or hose connections should never be taken directly from the bottom of air pipes or mains. Connection should be made at the top of the main and a long radius return bend used.

Leaders, valves and hose connections should be large enough to pass the maximum amount of air required by the tools or tools on the line. This is particularly important if manifolds, from which several hose lines run, are used.

Index

Index

MSI-PRO Cutting Tools

The AVENGER Advantage

Avenger products offer a full line of industrial carbide tipped saw blades and measuring tools for industrial and contractor applications.



Small Tungsten Carbide Saw Blades 3-3/8" To 4" Combination Blades



AV40020

ATB Top Angle for special small table top machines and portable trim saws suitable for ripping and crosscutting of all woods laminates and plastics. For use on Porter Cable® Trim and Microlux® Tilting Arbor Table Top hobby saws

Item #	Description	Arbor	Carbide	Grind
AV34024	3-3/8" x 24T	10mm	C-2	ATB
AV40020	4" x 20T	1/2" - 3/8"*	C-2	ATB
AV40040	4" x 40T	1/2" - 3/8"*	C-2	ATB

Item #40020 & 40040 are for use on Porter Cable® Trim Saws and Discontinued Dremel Table Saw Model #580.

*Blade has a 1/2" arbor and includes a 3/8" bushing

Cordless Machine Blades



AV55024

Thin kerf design and ATB Top Angle is ideal for cordless portable machines using less power to cut through material. Great for ripping and crosscutting all types of wood.

Item #	Description	Arbor	Carbide	Grind
AV54024	5-3/8" x 24T	20 - 10mm*	C-2	ATB
AV55024	5-1/2" x 24T	5/8" - 3/8"**	C-2	ATB
AV65024	6-1/2" x 24T	5/8" Diamond	C-2	ATB
AV65052	6-1/2" x 52T	5/8" Diamond	C-3	TCT

*Blade has a 20mm arbor and includes a 10mm bushing, ** Blade has a 5/8" arbor and includes a 3/8" bushing

Combination Blades for Portable Machines



AV72524

These Thin Kerf blades feature expansion slots and heat vents. Great for ripping or crosscutting all kinds of wood, plywood, and particle board. The extra safety Anti-Kick Tooth design will not grab the material.

Item #	Description	Arbor	Carbide	Grind
AV72524	7-1/4" x 24T	5/8" Diamond	C-2	ATB
AV72410*	7-1/4" x 24T	5/8" Diamond	C-2	ATB
AV72540	7-1/4" x 40T	5/8" Diamond	C-2	ATB
AV80024	8" x 24T	5/8" Diamond	C-3	ATB
AV82524	8-1/4" x 24T	5/8" Diamond	C-3	ATB

* 10pcs Packed Bulk



AVENGER
PRODUCTS

The Avenger Limited Edition Countersink Set includes 3/8" and 1/2" stop collars plus countersinks, HSS laper drills, 3/8" and 1/2" plug cutters. Cuts all types of woods, plywood and composite wood materials. All taper drills are industrial quality, made of high speed steel and the countersinks are heat treated carbon steel and ground to ensure extended life.

Countersink	Drill Size	Plug Cutter Size	Screw Size
C6	5/8"	3/8"	#6
C8	11/64"	3/8"	#8
C10	13/64"	1/2"	#10
C12	7/32"	1/2"	#12
C14	1/4"	1/2"	#14



Index

Index

Miter Saw / Table Saw Blades

Plywood Blades



AV82540

These blades provide smooth chip free cutting of solid woods, laminated plywood, particle board and melamine. They also feature a special 20 degree top angle, perfect for use on table and miter saws.

Item #	Description	Arbor	Carbide	Grind
AV80064	8" x 64T	5/8" Diamond	C-3	ATB
AV82540	8-1/4" x 40T	5/8" Diamond	C-3	ATB

Combination Blades



AV10022

These combination blades are for ripping and crosscutting all kinds of wood, plywood, particle board and laminated material. They feature copper plugged expansion slots to reduce noise.

Item #	Description	Arbor	Carbide	Grind
AV10022	10" x 40T	5/8"	C-3	ATB
AV12022	12" x 48T	1"	C-3	ATB
AV14025	14" x 60T	1"	C-3	ATB
AV15080	15" x 80T	1"	C-3	ATB
AV16160	16 - 5/16" x 60T	1"	C-3	ATB

Novelty Combination Blades



AV12020

Novelty combination blades with a four tooth raker design, a left/right top bevel and straight tooth. The large gullets help prevent loading. These are the most versatile blade you can buy, suitable for ripping and cross cutting all kinds of wood, plywood and particle board.

Item #	Description	Arbor	Carbide	Grind
AV10028	10" x 50T	5/8"	C-3	4 & 1
AV12020	12" x 60T	1"	C-3	4 & 1

Compound Miter Saw Blades



AV10019

Compound miter blades provide smooth, chip free cuts in all kinds of wood, laminated plywood, particle board, and plastics. They feature copper plugged expansion slots to reduce noise.

Item #	Description	Arbor	Carbide	Grind
AV10019	10" x 60T	5/8"	C-3	ATB
AV10023	10" x 80T	5/8"	C-3	ATB
AV12019	12" x 80T	1"	C-3	ATB
AV12023	12" x 96T	1"	C-3	ATB

Rip Blades



AV10021

Our rip blades have an aggressive hook angle and deep gullets to allow faster feed rates. These blades feature large gullets, and copper plugged expansion slots for reduced noise. Ideal for all solid wood and will fit all table saws and radial arm saws.

Item #	Description	Arbor	Carbide	Grind
AV10021	10" x 24T	5/8"	C-3	ATB
AV12021	12" x 28T	1"	C-3	ATB

Display Bulk pack 7-1/4" x 24T Blade - 10pcs



These thin kerf Blades feature expansion slots, and heat vents, great for ripping or crosscutting all kinds of wood, plywood, and particle board. The extra safety Anti-Kick Tooth will not grab the material.

Item #	Description	Arbor	Carbide	Grind
AV72410	7-1/4" x 24T	5/8" Diamond	C-2	ATB

Index

Index

Steel Cutting Blades



AV72536

All of our steel and iron cutting saw blades use special C-6 micro-grain carbide tips with titanium and tantalum to provide greater impact strength and durability. The blade body is made of a high carbon steel alloy that has been heat treated and surface ground to prevent flexing, bending and distortion, which results in greater blade strength and cutting accuracy.

Every blade is hand tensioned to guarantee flatness. Features heat vents, expansion slots, and a special triple chip grind that distributes the chip load for longer blade life. These blades are designed to cut all ferrous metals like iron and steel pipe, angle iron, flat bar, rebar, and galvanized materials. Will also cut all kinds of wood and non-ferrous metals like aluminum, brass and copper.

Item #	Description	Arbor	Carbide	Grind
AV49940	4" x 20T	20mm	C-6	TCG
AV54924	5-3/8" x 24T	20mm	C-6	TCG
AV62546	6-1/4" x 46T	5/8"	C-6	TCG
AV65948	6-1/2" x 48T	5/8"	C-6	TCG
AV67540	6-3/4" x 40T	20mm	C-6	TCG
AV79968	7" x 38T	20mm	C-6	TCG
AV72536	7-1/4" x 36T	5/8" Diamond	C-6	TCG
AV75948	7-1/2" x 48T	20mm	C-6	TCG
AV89948	8" x 48T	5/8"	C-6	TCG
AV90048	9" x 48T	1"	C-6	TCG
AV10080	10" x 80T	5/8"	C-6	TCG
AV12060	12" x 60T	1"	C-6	TCG
AV12100	12" x 100T	1"	C-6	TCG
AV14080	14" x 80T	1"	C-6	TCG
AV14120	14" x 120T	1"	C-6	TCG

Aluminum Cutting Blades



AV10900

Blades are for cutting brass, aluminum extrusions, solid bars, angle, channel shapes and even works great on melamine and plastics. They have a triple chip tooth design to distribute chip load and provide long cutting life. Special steel alloy body is hardened and tensioned for chatter free running. Large gullets prevent clogging, a 10 degree negative hook angle, and copper plugged expansion slots to reduce noise. Suitable for use on table, radial arm and miter saws.

Item #	Description	Arbor	Carbide	Grind
AV10900	10" x 100T	5/8"	C-4	TCG
AV12120	12" x 120T	1"	C-4	TCG
AV15110	15" x 110T	1"	C-4	TCG

Metal Cutting Blades



Blades are for cutting brass, aluminum extrusions, solid bars, angle, channel shapes and even works great on melamine and plastics. They have a triple chip tooth design to distribute chip load and provide long cutting life.

Special steel alloy body is hardened and tensioned for chatter free running. Suitable for use on table, radial arm and miter saws.

Item #	Description	Arbor	Carbide	Grind
AV72550	7-1/4" x 50T For cutting mild steel to 3/8" thick	5/8"	C-6	TCG
AV72560	7-1/4" x 60T For cutting thin aluminum	5/8"	C-4	TCG
AV72568	7-1/4" x 68T For cutting thin sheet steel	5/8"	C-6	ATB

Heavy Duty Rescue Blade



AV12012

AV12024

Negative hook safety design for use on gas powered machines. All tips are C-3 tungsten carbide on a heat-treated steel alloy body that is surface ground for uniform thickness.

Item #	Description	Arbor	Carbide	Grind
AV12012	12" x 12T	1" / 20 mm	C-3	FTG
AV12024	12" x 24T	1" / 20 mm	C-3	FTG

Heavy Duty Rescue Blade



Negative hook safety design for use on gas powered machines. All tips are C-1 tungsten carbide on a heat-treated steel alloy body that is surface ground for uniform thickness.

Item #	Description	Arbor	Carbide	Grind
AV12524	12" x 24T	1" / 20 mm	C-1	FTG
AV14030	14" x 30T	1" / 20 mm	C-1	FTG

Heavy Duty Deck / Nail Cutter



The heavy duty deck/nail cutter blade has special C-6 Tungsten Carbide tips that are ground with a 10 degree top angle and have square gullets for extra support of the carbide tips. Also features expansion slots and heat vents for cooler running. This blade is ideal for pressure treated lumber, Hardy Board®, and concrete coated lumber.

WILL EVEN CUT NAILS! SPECIAL C-6 CARBIDE.

Item #	Description	Arbor	Carbide	Grind
AV72518	7-1/4" x 18T	5/8" Diamond	C-6	ATB

Avenger 8" Premium Stacked Dado Set

The Avenger 8" Professional stacked dado set makes smooth and precise cuts either across or with the grain. Cuts all types of woods, plywood and composite wood materials. This set contains two 42 tooth outside cutting blades to give smooth chip free cuts, five 6 tooth full body chipper blades and two shim sets to give precise widths from 1/4" to 13/16".

Stack Dado Sets Include:

- 2 Blades: 42T x 8"
- 4 Chippers: 6T x 1/8"
- 1 Chipper: 6T x 1/16"
- 2 Blade Shims
- Shim Set



Aluminum Carry Case



Item #	Description
AV84206	Avenger 8" Professional Dado Set in Aluminum Carry Case

Promax 8" Shop Grade Stacked Dado Set

The ProMax 8" Shop Grade Dado Set stacked dado set makes smooth and precise cuts either across or with the grain. Cuts all types of woods, plywood and composite wood materials. This set contains two 24 tooth outside cutting blades to give smooth chip free cuts, five 2 tooth chipper blades and shim sets to give precise widths from 1/4" to 13/16".

Stack Dado Sets Include:

- 2 Blades: 24T x 8"
- 4 Chippers: 2T x 1/8"
- 1 Chipper: 2T x 1/16"
- Dado Shim Set



Wooden Carry Case



Item #	Description
PM0782402	PROMAX 8" Shop Grade Dado Set in Wooden Carry Case

C2 Industrial Carbide Tipped Blades



Cutoff Blade

07-70024 7-1/4"
24 Tooth, ATB,
Diamond knockout
5/8" Arbor
Bulk Pack



Fine Cut

07-72040 7-1/4"
40 Tooth, ATB,
Diamond knockout
5/8" Arbor

Contractor Series



Combination Blade

07-12040 10"
40 Tooth, ATB,
5/8" bore.



Smooth Cut

07-12060 10"
60 Tooth, ATB,
5/8" bore

7-1/4" blades are packed 10 to inner box & 20 to a case -
10" blades packed 5 to inner & 25 to a case.

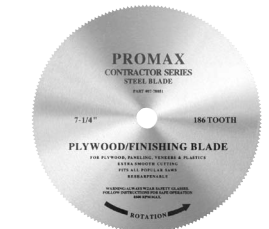


C2
PACKAGING

All our C2 blades are
bulk and bar coded

Steel Saw Blades

Steel blades are available in bulk only.



Steel Plywood Blade

07-78051, 7-1/4", 186 Tooth,
Diamond knockout, 5/8" Arbor



Steel Vinyl Siding Blade

07-78041, 7-1/4", 186 Tooth,
Diamond knockout, 5/8" Arbor



Steel Cutting Blade

07-78016, 7-1/4", 16 Slot,
Diamond knockout, 5/8" Arbor

C2 Industrial Carbide Tipped Blades - Hard Body



Rip Blade

07-23032, 12"
32 Tooth, ATB, 1" bore.

Extra Smooth Cut

07-23080 12"
80 Tooth, ATB, 1" bore



12Pc Saw Bushing Kit

25-00012
5/8" TO 1/2", 3/4" TO 5/8"
1" TO 7/8", 1" TO 5/8"
1" TO 3/8"
5/8" TO DIAMOND



Saw Bushing Kit

Index

Index

Diamond Hole Saws

HEAVY DUTY DIAMOND HOLE SAWS
For Stone & Tile



Item #	Description	Shank
24-84025	1/4"	1/4"
24-84037	3/8"	1/4"
24-84050	1/2"	1/4"
24-84075	3/4"	1/4"
24-84100	1"	1/4"
24-84125	1-1/8"	3/8"
24-84250	1-1/4"	3/8"
24-84375	1-3/8"	3/8"
24-84500	1-1/2"	3/8"
24-84750	1-3/4"	3/8"
24-84900	2"	3/8"

Sintered Diamond Hole Saws

Great for Hard Tile, Granite & Porcelain



*Includes pilot drill

Item #	Description	Shank
24-86025	1/4"	1/4"
24-86037	3/8"	1/4"
24-86050	1/2"	1/4"
24-86062	5/8"	1/4"
24-86075	3/4"	1/4"
*24-86100	1"	1/4"
*24-86125	1-1/8"	3/8"
*24-86250	1-1/4"	3/8"
*24-86375	1-3/8"	3/8"
*24-86500	1-1/2"	3/8"
*24-86625	1-5/8"	3/8"
*24-86750	1-3/4"	3/8"
*24-86900	2"	3/8"

Instructions For Proper Use Of Diamond Hole Saws

You will need the following:



- Drill press or portable drill
- Coolant
- Sturdy workbench or solid work surface
- Protective eye wear (safety glasses)

TIP: Protect yourself. Start by wearing your safety glasses. Drilling material produces fragments of material and dust that may impair your vision.

Making a hole

Start to drill a hole by lining up the drill to the material you are working on. Make a definite mark where the insertion point will be. Drill by quickly pressing and lifting the drill head.

Make sure the coolant is flowing. The coolant will flush out the material debris created from the drilling process. The color of the water in the drilling zone should be milky white.

Using a pilot drill will help reduce the slippage when starting the hole and help you to produce an accurate hole. When making contact with the material, tip the drill at a 45° angle.

Penetrate your material slightly, then slowly bring the drill to a 15° angle and bring the drill to an upright position as you further penetrate the material.

TIP: Drill by pressing and lifting the drilling head up and down frequently to allow the water to flush out the material debris.

The amount of pressure that you apply while drilling is very important. Use light to medium pressure when drilling your holes.

Excessive pressure will do little to reduce the time it takes to drill a hole. Excessive pressure can overload and overheat your drill and produce poor cuts in your material.

TIP: Apply pressure slowly and evenly while making your hole to produce perfect cuts.

Completing the hole

After you have drilled completely through your material, reduce the drill speed considerably to minimize chipping of the material.

RPM Chart For Diamond Hole Saws

Diameter	Recommended RPM's
1/8" (3.18mm)	2,500
3/16" (4.76mm)	2,250
1/4" (6.35mm)	2,000
5/16" (7.94mm)	1,500
3/8" (9.52mm)	1,250
7/16" (11.1mm)	1,000
1/2" (12.7mm)	950
9/16" (14.28mm)	925
5/8" (15.87mm)	875
2/3" (16.93mm)	850
11/16" (17.46mm)	850
3/4" (19.05mm)	825
7/8" (22.22mm)	775
1.0" (25.4mm)	700
1-1/8" (28.57mm)	675
1-1/4" (31.75mm)	650
1-3/8" (34.92mm)	600
1-1/2" (38.10mm)	550
1-5/8" (41.27mm)	550
1-3/4" (44.45mm)	550
2.00" (50.80mm)	525
2-1/4" (57.15mm)	500
2-1/2" (63.50mm)	475
3.00" (76.20mm)	450
3-1/2" (88.90mm)	425
4.00" (101.60mm)	400
6.00" (152.40mm)	300

Heavy Duty Hole Saws

For Tile & Glass



Item #	Description	Shank
24-88025	1/4"	1/4"
24-88037	3/8"	1/4"
24-88050	1/2"	1/4"
24-88075	3/4"	1/4"
24-88100	1"	1/4"
24-88125	1-1/8"	3/8"
24-88250	1-1/4"	3/8"
24-88375	1-3/8"	3/8"
24-88500	1-1/2"	3/8"
24-88750	1-3/4"	3/8"
24-88900	2"	3/8"

Diamond Hole Saws

For Soft Tile & Glass



Item #	Description	Shank
24-80025	1/4"	1/8"
24-80035	5/16"	1/8"
24-80037	3/8"	1/8"
24-80038	7/16"	1/4"
24-80050	1/2"	1/4"
24-80075	3/4"	1/4"
24-80100	1"	1/4"

Diamond Burr Sets



30 Piece Diamond Burr Sets

Item #	Description	Specifications
24-06075	30 Pc Set	3/32" Shank - M - 100 Grit
24-08075	30 Pc Set	1/8" Shank - M - 100 Grit

20 Piece Diamond Burr Sets

Item #	Description	Specifications
24-06083	20 Pc Set	3/32" Shank - S - 150 Grit
24-06085	20 Pc Set	3/32" Shank - M - 100 Grit
24-08093	20 Pc Set	1/8" Shank - S - 150 Grit
24-08095	20 Pc Set	1/8" Shank - M

8 Piece Diamond Burr Set

Item #	Description	Specifications
24-06053	8 Pc Set	3/32" Shank - S - 150 Grit
24-06055	8 Pc Set	3/32" Shank - M - 100 Grit
24-06059	8 Pc Set	3/32" Shank - C - 50 Grit
24-08053	8 Pc Set	1/8" Shank - S - 150 Grit
24-08055	8 Pc Set	1/8" Shank - M - 100 Grit
24-08059	8 Pc Set	1/8" Shank - C - 50 Grit

C = COARSE, M = MEDIUM,
S = STANDARD GRIT

1/4" Shank Diamond Burr Sets



6 Piece Diamond Burr Set

24-09037 6 Pc Set
1/4" Shank Medium
80 Grit

5 Piece Diamond Burr Set

24-09059 5 Pc Set
1/4" Shank Coarse
50 Grit

5 Piece Cutting Wheel Set

24-50000
3/4" Wheels
1/8" Mandrel

4 Piece Cutting Wheel Set

24-50100
1" Wheels
1/8" Mandrel

1 Cutting Wheel Set

24-14134
1-5/8" Wheel,
1/8" & 1/4" Mandrel

Individual Straight & V-Wheels



STRAIGHT WHEELS - 1/8" SHANK

Item #	Specifications
24-93701	3/4" x 1/8", Med. 80 Grit
24-93702	3/4" x 1/4", Med. 80 Grit
24-93703	3/4" x 3/8", Med. 80 Grit



V-WHEELS - 1/8" SHANK

Item #	Specifications
24-95710	3/4" x 1/8", Med. 80 Grit
24-95720	3/4" x 1/4", Med. 80 Grit
24-95730	3/4" x 3/8", Med. 80 Grit

Brazed Diamond Saw Blades

Great for ductile iron, ferrous, most non-ferrous metals, stone, concrete, asphalt, pvc pipe, plastic pipe, fiber cement board and most other construction materials.



24-32007
7" Demolition Blade
5/8" - Diamond Arbor -
Coarse Grit
24-31009
9" HD Demolition Blade
7/8" Arbor - Coarse Grit



24-33045
4-1/2" Multi-Purpose Blade
7/8" - 5/8" Arbor Medium Grit
24-33007
7" Multi-Purpose Blade
5/8" - Dia. Arbor
Medium Grit



Brazed Diamond Type 27 Depressed Center Wheels

24-40035
4" Dia. - Medium Grit 7/8" Arbor
24-45035
4-1/2" Dia. - Medium Grit 7/8" Arbor
24-40035
4" Dia. - Medium Grit 7/8" Arbor
24-45035
4-1/2" Dia. - Medium Grit 7/8" Arbor



24-45130
4-1/2" Dia. - Course Grit 5/8-11 Arbor
24-45150
4-1/2" Dia. - Medium Grit 7/8" Arbor



Brazed Diamond Burrs

24-99502
3/4" x 3-1/2"
3/8" Harden Shank
Coarse Grit
24-99501
5/8" x 3-1/2" x 3/8"
3/8" Harden Shank
Coarse Grit
24-99061
5/8" x 2-3/4"
1/4" Shank
Coarse Grit
24-99070
3/4" x 2-1/4", 1/4"
Shank Coarse Grit



Self Feed Bit

Item #	Description
85100	1" Self-Feed Bit
85137	1-3/8" Self-Feed Bit
85150	1-1/2" Self-Feed Bit
85200	2" Self-Feed Bit
85215	2-1/8" Self-Feed Bit
85245	2-9/16" Self-Feed Bit
85300	3" Self-Feed Bit
85540	7/16" x 5" Extension
85550	7/16" x 10" Extension



85200
Drill large diameter holes in wood for pipe, conduit and many other applications.

10-Pc Combination Taper Drill Set In Wood Box



WB70231

Set includes #6, #8, #10, #12 & #14 countersinks, HSS taper drills, stop collars plus 3/8" & 1/2" plug cutters all in wood box.

7-Pc HSS Taper Drill Set In Protective Pouch

1/8", 9/64", 5/32", 11/64", 3/16", 13/64", 7/32".



81907

All interchangeable with WL Fuller !!

Individual Forstner Bits

CLAM SHELL PACKAGE UP TO 2-1/8" FOR EASY DISPLAY



Item #	Diameter	Shank	Shank Length	Overall Length
70250	1/4"	3/8"	1-1/8"	3-1/5"
70312	5/16"	3/8"	1-1/8"	3-1/2"
70375	3/8"	3/8"	1-1/8"	3-1/2"
70437	7/16"	3/8"	1-1/8"	3-1/2"
70500	1/2"	3/8"	1-1/8"	3-1/2"
70562	9/16"	3/8"	1-1/8"	3-1/2"
70625	5/8"	3/8"	1-1/8"	3-1/2"
70687	11/16"	3/8"	1-1/8"	3-1/2"
70750	3/4"	3/8"	1-1/8"	3-1/2"
70812	13/16"	3/8"	1-1/8"	3-1/2"
70875	7/8"	3/8"	1-1/8"	3-1/2"
70937	15/16"	3/8"	1-1/8"	3-1/2"
71000	1"	3/8"	1-1/8"	3-1/2"
71125	1-1/8"	3/8"	1-1/8"	3-1/2"
71250	1-1/4"	3/8"	1-1/8"	3-1/2"
71375	1-3/8"	3/8"	1-1/8"	3-1/2"
71312	1-5/16"	3/8"	1-1/8"	3-1/2"
71500	1-1/2"	3/8"	1-1/8"	3-1/2"
71562	1-9/16"	3/8"	1-1/8"	3-1/2"
71625	1-5/8"	3/8"	1-1/8"	3-1/2"
71750	1-3/4"	3/8"	1-1/8"	3-1/2"
71875	1-7/8"	3/8"	1-1/8"	3-1/2"
71937	1-15/16"	3/8"	1-1/8"	3-1/2"
72000	2"	3/8"	1-1/8"	3-1/2"
72125	2-1/8"	3/8"	1-1/8"	3-1/2"
72225	2-1/4"	1/2"	2"	3-1/2"
72375	2-3/8"	1/2"	2"	3-1/2"
72500	2-1/2"	1/2"	2"	3-1/2"
72625	2-5/8"	1/2"	2"	3-1/2"
72750	2-3/4"	1/2"	2"	6-1/4"
72875	2-7/8"	1/2"	2"	6-1/4"
73000	3"	1/2"	2"	6-1/4"
73125	3-1/8"	1/2"	2"	6-1/4"
73250	3-1/4"	1/2"	2"	6-1/4"
73500	3-1/2"	1/2"	2"	6-1/4"
73562	3-9/16"	1/2"	2"	6-1/4"
73625	3-5/8"	1/2"	2"	6-1/4"
73687	3-11/16"	1/2"	2"	6-1/4"
73750	3-3/4"	1/2"	2"	6-1/4"
73875	3-7/8"	1/2"	2"	6-1/4"
71026	26mm	3/8"	1-1/8"	3-1/2"
71340	35mm	3/8"	1-1/8"	3-1/2"
71565	40mm	3/8"	1-1/8"	3-1/2"

Forstner Bit Sets

Standard Hex Shank (some round shanks available)



Includes Protective Blow Mold Case

16-Piece Forstner Bit Set



70016

Forstner bit sets in blow mold storage box. Well ground, carbon steel, bits larger than 1" have saw toothed edges. Set includes 1/4" to 2-1/8" by 1/8", 3/8" shank, 3-1/2" overall length. Easy to sharpen.

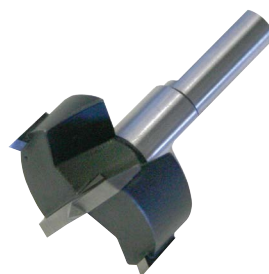
7-Piece Forstner Bit Set



70007

Carbide Tipped Hinge Boring Bits

For Installation Of European Hinges



Item #	Description
73925	25MM Bit- 10MM Shank
73930	30MM Bit- 10MM Shank
73935	35MM Bit- 10MM Shank

22-Piece Countersink Set



22pc taper drill set with countersink, taper drill and individual stop collars. Sizes 5,6,7,8,9,10,&12. In fitted wood box.

70022

7-Piece Carbide Brad Point Set

Clean cutting, carbide tipped, will give years of use in hardwoods. 7pc set includes 1/8" to 1/2" in 1/8" increments. Packed in fitted wood box.



70017

13-Piece Carbide Brad Point Set



13pc set includes 1/8" to 1/2" in 1/32" increments. Maximum shank 3/8".

70019

High Speed Steel Step Drill - Flat Bottom Hole



79128

High Speed Steel Step Drill - 82 Degree



79129

Individual Plug Cutters

Item #	Description
82500	1/4"
83125	5/16"
83750	3/8"
84375	7/16"
85000	1/2"



Countersinks, Stop Collars & HSS Taper Drills (Fits W.L. Fuller)

Open Stock Program



Item #	Description
Countersink Bits	
81015	#5 Countersink
81016	#6 Countersink
81017	#7 Countersink
81018	#8 Countersink
81019	#9 Countersink
81020	#10 Countersink
81022	#12 Countersink
81024	#14 Countersink
Countersink Sets	
81035	#5 - 3Pc Countersink Set
81036	#6 - 3Pc Countersink Set
81037	#7 - 3Pc Countersink Set
81038	#8 - 3Pc Countersink Set
81039	#9 - 3Pc Countersink Set
81040	#10 - 3Pc Countersink Set
81042	#12 - 3Pc Countersink Set
81043	#14 - 3Pc Countersink Set
Taper Drill Bits for Countersink	
81125	1/8" - Taper Drill For #5 Countersink
81203	13/64" Taper Drill For #10 Countersink
81218	7/32" - Taper Drill For #12 Countersink
81250	1/4" - Taper Drill For #14 Countersink
81405	9/64" - Taper Drill For #6 Countersink
81562	5/32" - Taper Drill For #6 Countersink
81719	11/64" Taper Drill For #8 Cou
81875	3/16" Taper Drill For #9 Countersink

Adjustable 82 Degree Carbide Tip Countersink

Accepts Drills 3/32" To 3/16" For Wood Screws #4 To #10



81900

MSI-PRO Industrial Clamps

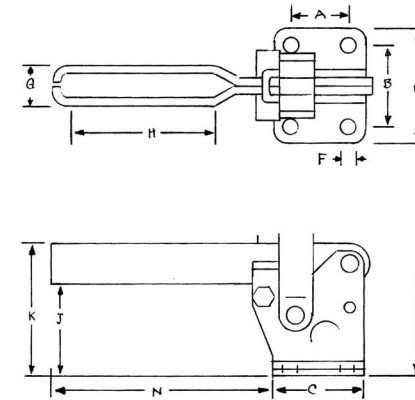
The MSI-PRO Advantage

MSI-PRO clamps are top quality industrial grade products that are thoroughly tested and are tested to 1-1/2 times the rated capacity.



Vertical Handle Toggle Clamps

Model 101A



Holding Capacity: 100 lbs Max. Handle Moves 56°, Bar 100° Supplied with No.FC 10138 Neoprene tipped spindle assembly. See page 53 for other accessories. All models supplied with red vinyl hand grip for safety and visibility.

MSI-101-A

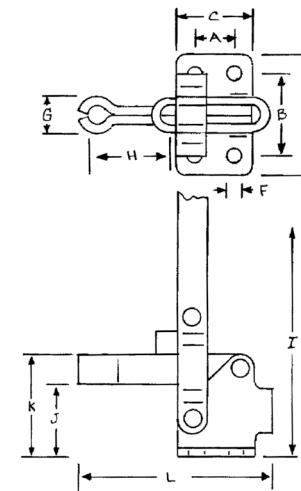


Available in Stainless Steel

Model	Description
101-A	U-Bar, Flanged Base, Straight Handle

Models 12050, 12070, 1305

Available in Stainless Steel (MSI-12050 only)



MSI-12050

MSI-12070

MSI-1305



Model	Description
12050	Fixed Spindle, Flanged Base, Straight Handle
12070	Fixed Spindle, Flanged Base, T-Handle
1305	U-Bar, Flanged Base, T-Handle

Holding Capacity: 200 lbs Max. Handle Moves 60°, Bar 100° MSI-1305-150 lbs Max. Handle Moves 175°, Bar 90° 12050/70 - Supplied with No.FC 14134 Neoprene tipped spindle assembly. All models supplied with red vinyl hand grip for safety and visibility. 1305 - Supplied with FC 10138 Neoprene tipped spindle assembly. See page 53 for other accessories.

Model	A	B	C	D	E	F	G	H	I	J	K	L	M	N	O	Capacity	Weight
101-A	IN .63	.94	1.00	1.33	-	.17	.39	.72	3.20	.65	.98	2.07	-	-	-	100 lbs	2.4oz
12050	IN .50	1.06	1.00	1.56	-	.19	.53	1.16	3.90	.93	1.44	2.50	-	-	-	200 lbs	5.6oz
12070	IN .50	1.06	1.00	1.56	-	.19	.53	1.20	2.81	.95	1.37	2.38	-	-	-	200 lbs	6.2oz
1305	IN .63	.55	1.05	1.02	-	.16	.38	.53	1.37	.48	.80	2.26	-	-	-	150 lbs	2.0oz

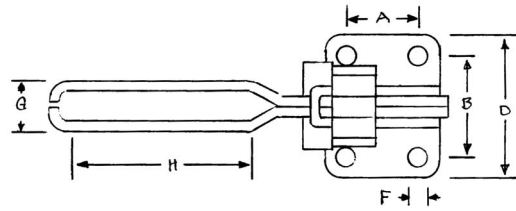
Index

Index

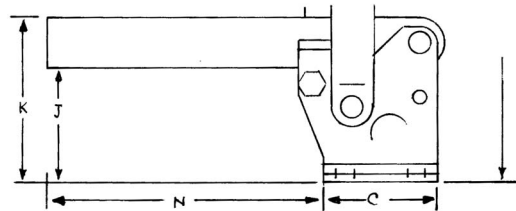
Vertical Handle Toggle Clamps

Model 10247

MSI-10247



Holding Capacity: 1000 lbs Max.
 Handle Moves 70°, Bar 135° Without Roll Pin.
 Handle Moves 58°, Bar 100° With Roll Pin.
 Supplied with No.SA 12300 spindle assembly.
 See page 53 for other accessories. All models supplied with red vinyl hand grip for safety and visibility.

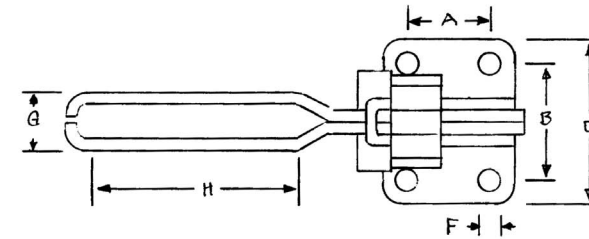


Model	Description
10247	U-Bar, Flanged Base, Straight Handle

Vertical Handle Toggle Clamps

Model 12134

MSI-12134



Holding Capacity: 500 lbs Max.
 Handle Moves 60°, Bar 100°
 All models supplied with red vinyl hand grip for safety and visibility.



Model	Description
12134	Solid-Bar, Straight Base, Straight Handle

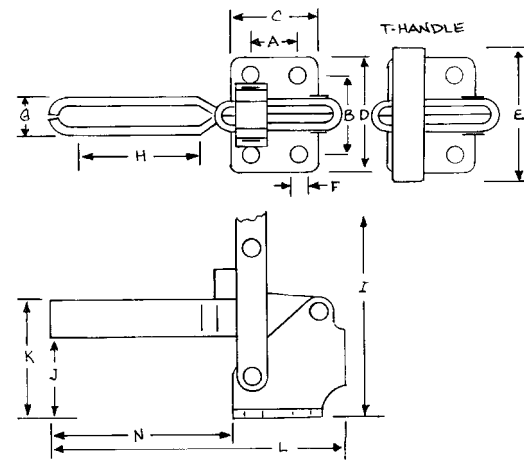
Models 12130 Thru 12133

Index



MSI-12130

Available in Stainless Steel (MSI-12130 only)



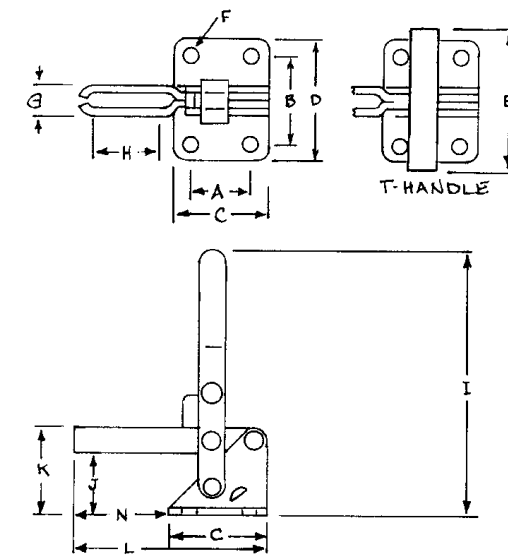
Holding Capacity: 500 lbs Max. Handle Moves 60°, Bar 100°
 Supplied with No.FC 56212 Neoprene tipped spindle assembly.
 See page 53 for other accessories. All models supplied with red vinyl hand grip for safety and visibility.

Model	Description
12130	Short U-Bar, Flanged Base, Straight Handle
12131	Short U-Bar, Flanged Base, T-Handle
12132	Long U-Bar, Flanged Base, Straight Handle
12133	Long U-Bar, Flanged Base, T-Handle

Model	A	B	C	D	E	F	G	H	I	J	K	L	M	N	O	Capacity	Weight	
10247	IN	1.25	1.78	2.00	2.53	-	.330	.920	3.28	8.97	2.16	2.75	7.08	-	5.00	-	1000lbs	3.3lbs
12130	IN	.75	1.25	1.53	1.89	-	.28	.62	1.89	6.23	1.57	2.23	4.60	-	2.84	-	500lbs	14.4oz
12131	IN	.75	.125	1.53	1.88	3.62	.28	.64	1.92	4.53	1.59	4.70	4.53	-	2.78	-	500lbs	14.4oz
12132	IN	.77	1.25	1.53	1.88	-	.28	.66	3.35	6.25	1.44	1.50	6.03	-	4.27	-	500lbs	15.2oz
12133	IN	.75	1.25	1.53	1.85	3.59	.28	.66	3.43	4.74	1.68	2.20	5.96	-	4.19	-	500lbs	14.0oz

Model 12265

MSI-12265



Available in Stainless Steel (MSI-12265 only)

Model	Description
12265	U-Bar, Flanged Base, Straight Handle

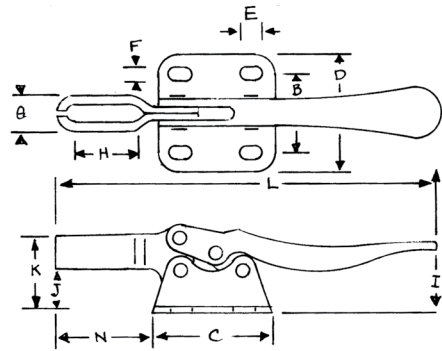
Holding Capacity: 750 lbs Max. Handle Moves 58°, Bar 105°. Supplied with No.FC 38312 Neoprene tipped spindle assembly. See page 53 for other accessories. All models supplied with red vinyl hand grip for safety and visibility.

Model	A	B	C	D	E	F	G	H	I	J	K	L	M	N	Capacity	Weight	
12134	IN	.78	-	1.54	.54	-	.27	.24	2.61	6.52	1.75	2.48	1.76	-	3.45	500lbs	13.4oz
12265	IN	1.25	1.83	1.93	2.60	-	.320	.726	2.47	7.75	1.61	2.36	5.60	-	3.53	750lbs	22.5oz

Index

Horizontal Handle Toggle Clamps

Model 201



MSI-201

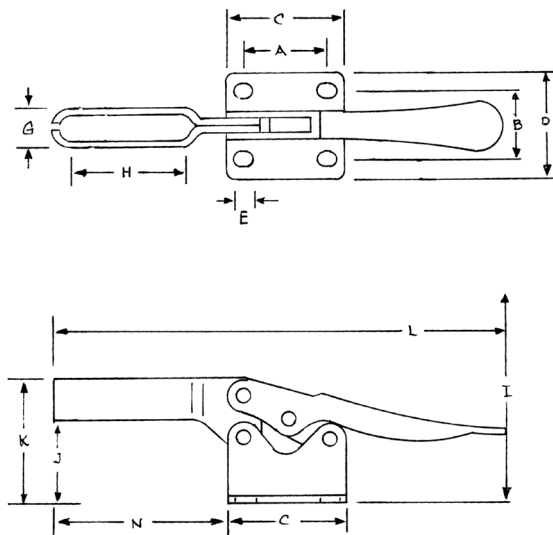


Available in Stainless Steel

Holding Capacity: 60 lbs Max. Handle Moves 80°, Bar 90°. Supplied with No. FC10118 spindle assembly. See page 53 for other accessories. All models supplied with red vinyl hand grip for safety and visibility.

Model	Description
201	U-Bar, Flanged Base

Model 201B



MSI-201B



Available in Stainless Steel

Holding Capacity: 200 lbs Max. Handle Moves 60°, Bar 85°. Supplied with No.FC 14134 Neoprene tipped spindle assembly. See page 53 for other accessories. All models supplied with red vinyl hand grip for safety and visibility.

Model	Description
201-B	U-Bar, Flanged Base

Model	A	B	C	D	E	F	G	H	I	J	K	L	M	N	Capacity	Weight
201	IN	.55	.60	.97	.95	.27	.16	.30	.52	2.42	.41	.78	3.23	-.63	60lbs	.8oz
201-B	IN	1.00	.88	1.50	1.34	.23	.20	.45	1.59	1.56	1.07	1.45	5.63	-.210	200lbs	4.8oz

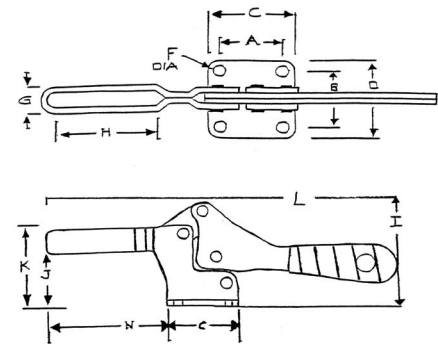
Horizontal Toggle Clamps

Models 217 And 227



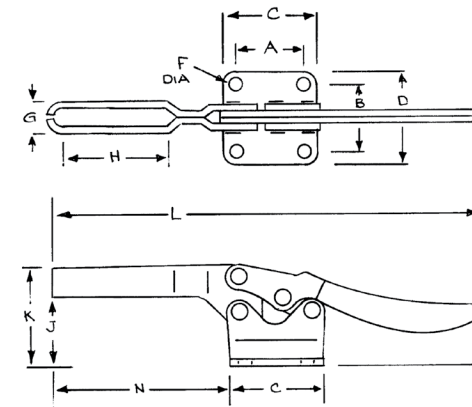
MSI-217

Holding Capacity: 200 lbs (MSI-217) / 500 lbs (MSI-227) Supplied with No.FC56212 Neoprene tipped spindle assembly. See page 53 for other accessories. All models supplied with red vinyl hand grip for safety and visibility.



Model	Description
217	U-Bar, Flanged Base
227	U-Bar, Flanged Base

Model 225D



MSI-225D

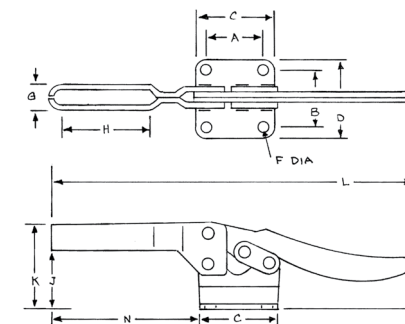


Available in Stainless Steel Compact Size Low Profile

Holding Capacity: 500 lbs Max. Handle Moves 65°, Bar 90°. Supplied with No.FC56212 Neoprene tipped spindle assembly. See page 53 for other accessories. All models supplied with red vinyl hand grip for safety and visibility.

Model	Description
225-D	U-Bar, Flanged Base

Model 20235



MSI-20235



Available in Stainless Steel

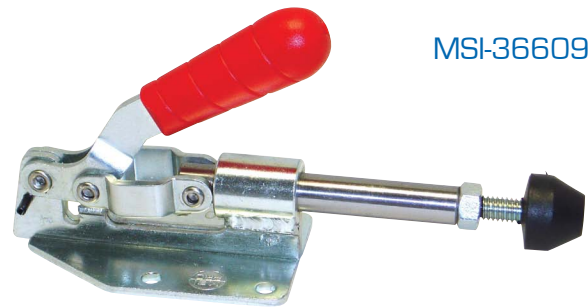
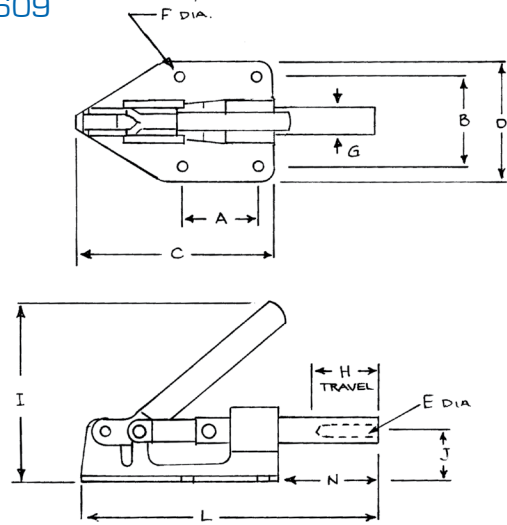
Holding Capacity: 750 lbs Max. Handle Moves 50°, Bar 85°. Supplied with No.FC38312 Neoprene tipped spindle assembly. See page 53 for other accessories. All models supplied with red vinyl hand grip for safety and visibility.

Model	Description
20235	U-Bar, Flanged Base

Model	A	B	C	D	E	F	G	H	I	J	K	L	M	N	Capacity	Weight
217	IN	1.05	1.10	1.47	1.61	-.212	.435	1.58	1.96	.960	1.44	6.85	-.240	200lbs	7.2oz	
227	IN	1.05	1.16	1.56	1.74	-.232	.600	1.55	2.44	1.28	1.86	7.57	-.260	500lbs	12.8oz	
225-D	IN	1.03	.88	1.57	1.37	-.27	.60	1.37	1.87	1.28	1.80	6.63	-.270	500lbs	9.6oz	
20235	IN	1.63	1.63	2.25	2.25	-.33	.75	2.59	2.50	1.75	2.50	10.4	-.424	750lbs	1.35lbs	

Push/Pull Toggle Clamps

Model 36609



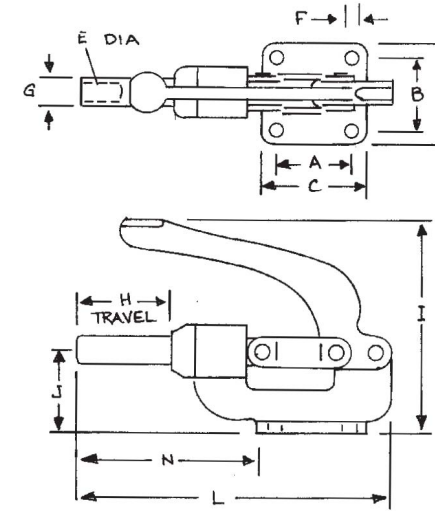
MSI-36609

Holding Capacity: 300 lbs Max.
Plunger Travel 1 1/2"
Supplied with No.FC56212 tipped spindle assembly.
See page 53 for other accessories. All models supplied with red vinyl hand grip for safety and visibility.

Model	Description
36609	Push/Pull, Internal Threads

Push/Pull Toggle Clamps

Model 36010



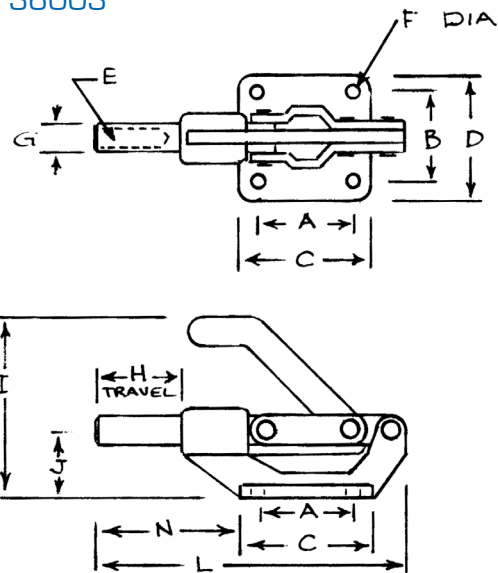
MSI-36010

Also known as "Wagon Brakes". Locks In Extended Or Retracted Position. Ideal For Pin Locating Gauges

Holding Capacity: 800 lbs Max.
Plunger Travel 1 5/8"
Supplied with No.SA 38300 spindle assembly. See page 53 for other accessories. All models supplied with red vinyl hand grip for safety and visibility.

Model	Description
36010	Push/Pull, Internal Threads

Model 36003



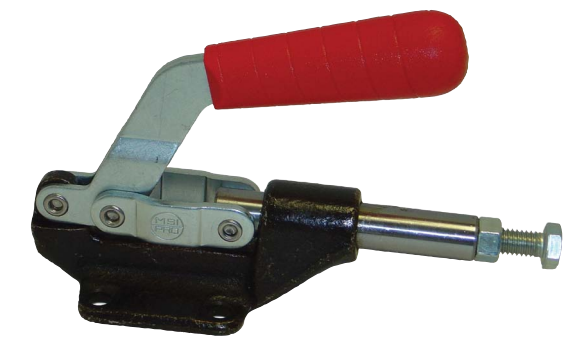
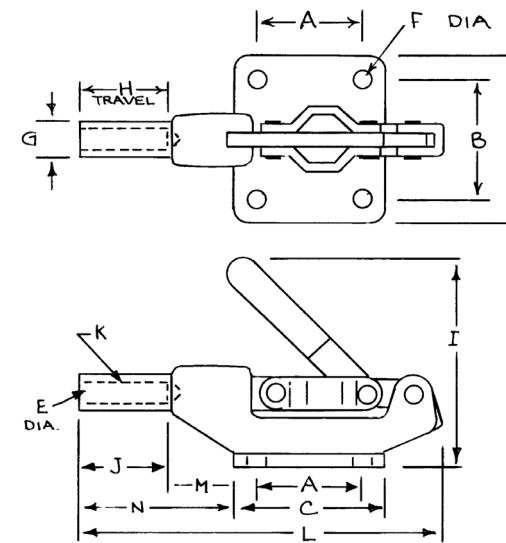
MSI-36003

Holding Capacity: 600 lbs Max.
Plunger Travel 1 1/4"
Supplied with No.SA 56212 spindle assembly. See page 53 for other accessories. All models supplied with red vinyl hand grip for safety and visibility.

Model	Description
36003	Push/Pull, Internal Threads

Model	A	B	C	D	E	F	G	H	I	J	K	L	M	N	Capacity	Weight	
36609	IN	1.38	1.63	3.63	2.19	5/16-18	.23	.47	1.20	3.38	.97	-	5.06	-	1.86	300lbs	14oz
36003	IN	1.44	1.31	2.30	1.92	5/16-18	.20	.43	1.22	3.05	.97	1.13	4.85	-	2.05	600lbs	14.4oz

Model 304E



MSI-304E

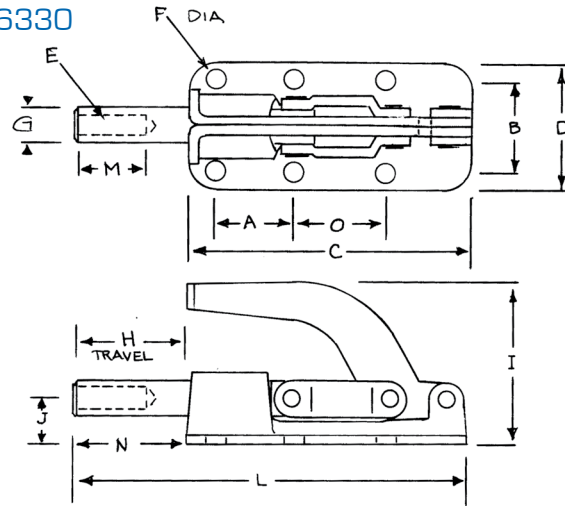
Holding Capacity: 850 lbs Max.
Plunger Travel 1 5/8"
Supplied with SA12300 spindle assembly. See page 53 for other accessories. All models supplied with red vinyl hand grip for safety and visibility.

Model	Description
304-E	Push/Pull, Internal Threads

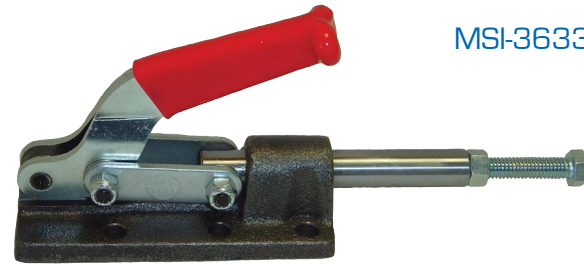
Model	A	B	C	D	E	F	G	H	I	J	K	L	M	N	Capacity	Weight	
36010	IN	1.63	1.63	2.25	2.25	3/8-16	.34	.63	1.63	4.86	1.70	-	6.75	-	3.84	800lbs	1.85lbs
304-E	IN	1.63	1.63	2.25	2.30	3/8-16	.33	.63	1.57	4.25	.950	2.04	6.07	1.37	2.93	850lbs	1.28lbs

Push/Pull Toggle Clamps

Model 36330



Heavy duty low profile plunger locks in extended or retracted position ductile iron base



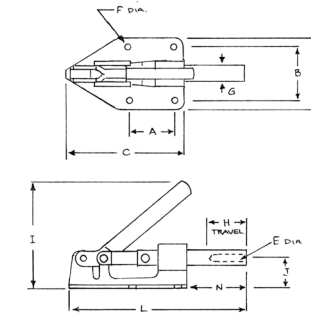
MSI-36330

Holding Capacity: 2500 lbs
Plunger Travel: 1.63"
 Supplied with No.SA 38300 spindle assembly. See page 53 for other accessories. All models supplied with red vinyl hand grip for safety and visibility.

Model	Description
36330	Push/Pull, Internal Threads

Model	A	B	C	D	E	F	G	H	I	J	K	L	M	N	O	Capacity	Weight	
36330	IN	1.38	1.63	5.10	2.30	3/8-16	.34	.62	1.90	3.17	.93	-	7.32	1.78	2.20	1.63	2500 lbs	2.4 lbs

Push/Pull Toggle Clamps



Model 302F

Also known as "Wagon Brakes". Low Profile Plunger Locks in Extended or Retracted Position

MSI-302F

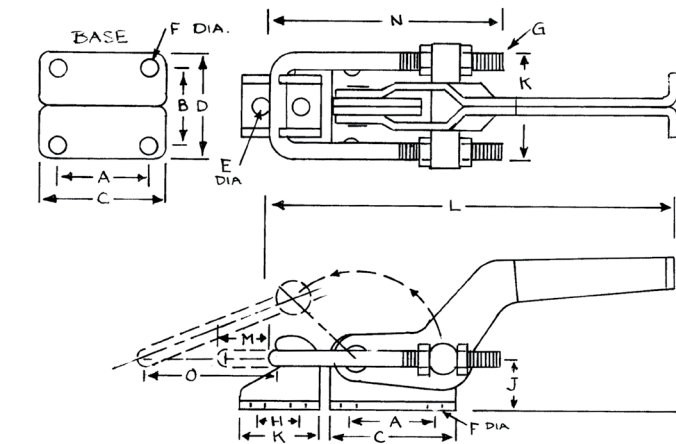


Holding Capacity: 300 lbs Max. Plunger Travel 1 1/4".
 Supplied with No. FC 56212 spindle assembly. See page 53 for other accessories. All models supplied with red vinyl hand grip for safety and visibility.

Model	Description
302-F	Push/Pull, Internal Threads

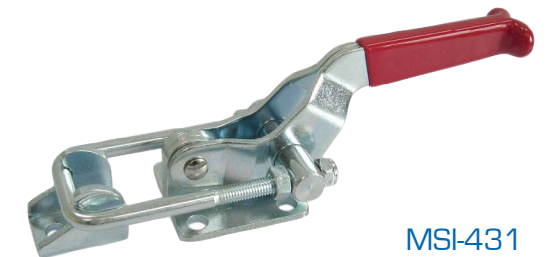
Model	A	B	C	D	E	F	G	H	I	J	K	L	M	N	Capacity	Weight	
301-A	IN	.63	.63	1.31	1.06	8-32	.178	.246	.63	1.49	.50	-	2.69	-	1.35	100lbs	1.6oz
302-F	IN	1.40	1.63	3.60	2.19	5/16-18	.213	.429	1.28	3.48	.968	-	5.52	-	1.74	300lbs	10.5oz

Latch Type Toggle Clamps



Models 40323, 431, 40341

Available in Stainless Steel
 Model 431 Available with Black Handle (MSI-431B) [EDP-53171]
 Model 40341 Available with Black Handle (MSI-40341B) [EDP-53181]



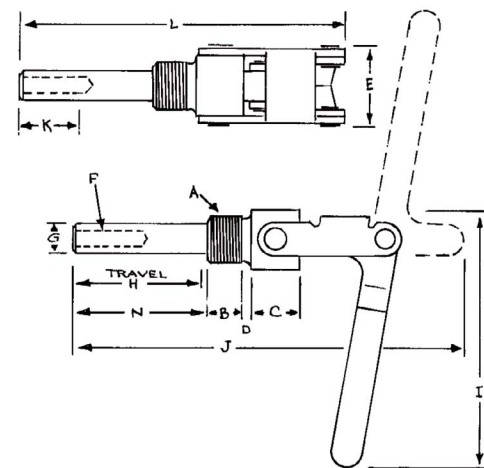
MSI-431

Holding Capacity:
 MSI-40323; 360 lbs
 MSI-431; 700 lbs
 MSI-40341; 2000 lbs
 Latch plate included. All models supplied with red vinyl hand grip for safety and visibility.

Model	Description
40323	Latch, Flanged Base, Straight Handle
431	Latch, Flanged Base, T-Handle
40341	Latch, Flanged Base, T-Handle

Model	A	B	C	D	E	F	G	H	I	J	K	L	M	N	O	Capacity	Weight	
40324	IN	.50	.85	1.00	1.38	.17	.20	8-36	.56	2.20	1.23	1.00	3.30	.44	3.00	1.50	500lbs	3.2 oz
40323	IN	.63	.75	1.05	1.11	.17	.17	8-36	.39	1.29	.47	.79	3.47	.76	2.23	.76	360lbs	2.56 oz
431	IN	.75	1.24	1.65	1.75	.280	.273	1/4-20	.46	1.95	.60	1.00	5.45	1.37	3.52	1.60	700lbs	9.45 oz
40341	IN	1.65	1.50	2.57	2.47	.35	.35	5/16-20	.75	2.64	1.10	1.49	7.60	1.80	5.04	2.70	2000lbs	1.75 lbs

Index



Models 36202, 36204, 36224

Holding Capacity:
 36202; 200 lbs Plunger Travel 3/4"
 36204; 300 lbs Plunger Travel 1 1/2"
 36224; 700 lbs Plunger Travel 2 19/32"
 36202 supplied with SA 14112 spindle assembly.
 36204 supplied with SA 56212 spindle assembly
 36224 supplied with SA 38300 See page 53 for other accessories. All models supplied with red vinyl hand grip for safety and visibility.

MSI-36204



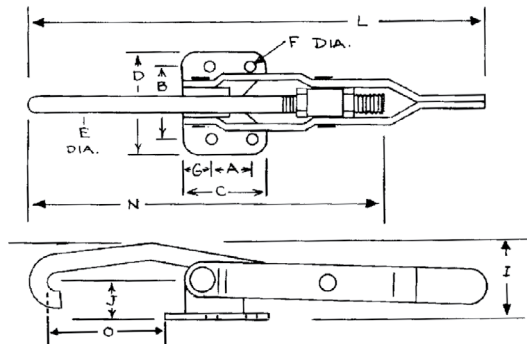
Model	Description
36202	Push/Pull, Internal Threads
36204	Push/Pull, Internal Threads
36224	Push/Pull, Internal Threads

Model	A	B	C	D	E	F	G	H	I	J	K	L	M	N	Capacity	Weight		
36202	IN	5/8-18	.40	.36	.09	1.06	1/4-20	.35	.75	2.9	2.0	.83	2.48	-	-	-	200lbs	3.84 oz
36204	IN	3/4-16	.53	.69	.09	1.30	5/16-18	.43	1.44	4.20	3.55	1.00	4.24	-	-	-	300lbs	9.9 oz
36224	IN	1-14	.88	1.00	.188	1.56	3/8-16	.63	2.63	5.56	6.69	1.25	6.69	-	-	-	700lbs	1.52 lbs

Index

Latch Type Toggle Clamps

Models 451, 451C, 40371



MSI-451C

Available in Stainless Steel (MSI-451 only)

Holding Capacity:
MSI; 451, 451C 375 lbs
MSI; 40371 750 lbs
 Not supplied with spindle or latch plate. All models supplied with red vinyl hand grip for safety and visibility.

Model	Description
451	Latch Type, Flanged Base, Straight Handle
451C	Curved, Latch Type, Flanged Base, Straight Handle
40371	Latch Type, Flanged Base, Straight Handle

Model	A	B	C	D	E	F	G	H	I	J	K	L	M	N	O	Capacity	Weight	
4311	IN	1.25	1.78	1.91	2.50	.40	.33	.56	1.88	2.23	1.43	.40	9.5	3.00	3.5	5.48	1200lbs	1.25lbs
451	IN	.75	1.38	1.50	1.94	.31	.22	.50	-	1.33	.75	-	8.46	-	5.98	1.22	375lbs	8.8oz
451C	IN	.75	1.38	1.50	1.98	.31	.22	.45	-	1.88	.59	-	8.64	-	5.86	2.20	375lbs	9.8oz
40371	IN	1.25	1.94	1.88	2.53	-	.37	.30	1.87	2.27	1.45	.37	11.42	3.0	7.99	5.40	750lbs	1.4lbs

Toggle Clamp Conversion Chart

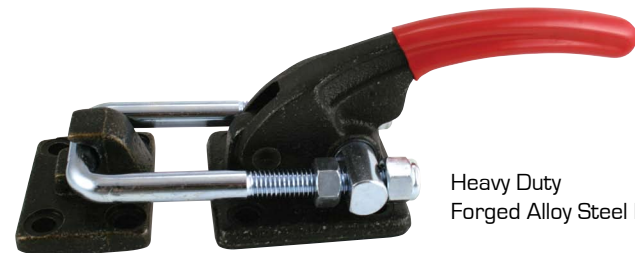
Clamps

MSI-PRO #	EDP #	DESTACO #	CARR LANE #
MSI 101A	50100	201	CL 150 VTC
MSI 12050	50110	202	CL 250 VTC
MSI 12070	50115	202 T	CL 252 VTC
MSI 12130	50120	207 U	CL 450 VTC
MSI 12131	50121	207 TU	CL 452 VTC
MSI 12132	50122	207 UL	CL 453 VTC
MSI 12133	50123	207 TUL	--
MSI 12134	50126	207 LB	CL 351 VTC
MSI 1305	50128	305 U	CL 200 VTC
MSI 12265	50130	210 U	CL 650 VTC
MSI 10247	50140	247 U	CL 850 VTC
MSI 201	51100	205 U	CL 250 HTC
MSI 201B	51110	215 U	CL 350 HTC
MSI 217	51115	217 U	--
MSI 225D	51120	225 U	CL 450 HTC
MSI 227	51125	227 U	--
MSI 20235	51130	235 U	CL 550 HTC
MSI 36202	52100	602	CL 150 TPC
MSI 36204	52101	604	CL 250 TPC
MSI 36224	52102	624	CL 350 TCP
MSI 301A	52110	601	CL 50 SPC
MSI 302F	52120	605	CL 150 SPC
MSI 36003	52140	603	--
MSI 36609	52150	609	--
MSI 36010	52160	610	CL 250 SPC
MSI 304E	52170	608	CL 200 PC
MSI 36330	52190	630	CL 350 SPC
MSI 451	53110	351	CL 250 PA
MSI 451C	53111	--	--
MSI 40371	53120	371	--
MSI 40324	53130	324	CL 110 PA
MSI 40323	53160	323	CL 100 PA
MSI 431	53170	331	CL 200 PA
MSI 431B	53171	331	CL 200 PA
MSI 40341	53180	341	CL 300 PA
MSI 4311	53183	311	--
MSI 40380	53200	385	CL 500 PA

Accessories

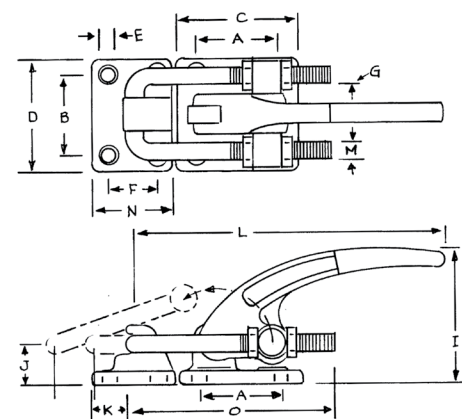
MSI-PRO #	EDP #	DESTACO #	CARR LANE #
FC 10138	55110	201208	CL 316112 FC
FC 14134	55120	202208	CL 14112 FC
FC 14218	55125	215208	CL 14200 FC
FC 56212	55130	225208	CL 518208 FC
FC 56300	55135	507208	CL 516212
FC 38312	55140	527208	CL 38314 FC
FC 38412	55145	--	--
FC 12334	55150	--	--
SA 08034	55200	105203	CL 832203 SA
SA 10118	55210	305203	CL 316112 SA
SA 14112	55220	--	--
SA 14134	55225	205203	CL 14112 SA
SA 56200	55230	441203	--
SA 56212	55235	207203	CL 516212 SA
SA 38300	55240	210203	CL 38314 SA
SA 38400	55245	240203	--
SA 12300	55250	325203	CL 012314 SA
SA 12412	55255	220203	--
SA 58500	55260	250203	CL 58438 SA
CC 10138	55310	305208	CL 316112 CC
CC 14134	55320	--	CL 14112 CC
CC 14218	55325	213208	CL 14200 CC
CC 56212	55330	--	CL 516212 CC
CC 38312	55340	210208	CL 38314 CC
SF 14214	55420	207206	CL 14200 SF
SF 56234	55430	507206	CL 516212 SF
SF 38300	55440	468206	CL 38314 SF
SF 12400	55450	250206	--
FW 080	55500	105106	CL 832 TW
FW 100	55510	102111	CL 3166 TW
FW 140	55520	215105	CL 148 TW
FW 516	55530	507107	CL 5169 TW
FW 380	55540	235106	CL 3811 TW
FW 120	55550	247109	CL 1213 TW
FW 580	55560	267102	CL 5811 TW
NC 140	55620	215119	--
NC 516	55630	225119	--
NC 380	55640	235119	--
NC 120	55650	--	--

MSI-40380



Heavy Duty Forged Alloy Steel Base

Holding Capacity: 7500 lbs
 Latch plate included. All models supplied with red vinyl hand grip for safety and visibility.



Model	Description
40380	Latch, Flanged Base, Straight Handle

Model	A	B	C	D	E	F	G	H	I	J	K	L	M	N	O	Capacity	Weight	
40380	IN	2.25	2.25	3.49	3.14	.41	1.39	1.63	-	3.46	1.13	1.83	8.81	.50	2.28	5.80	7500lbs	72.oz

Index

Index

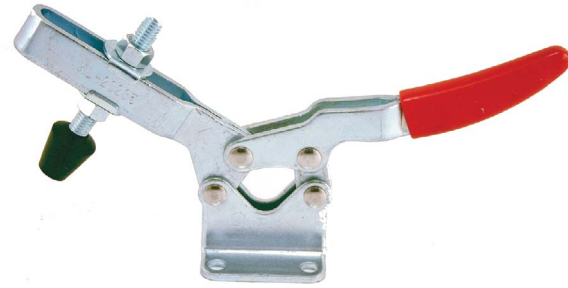


Shop Grade Toggle Clamps - Retail Packaged

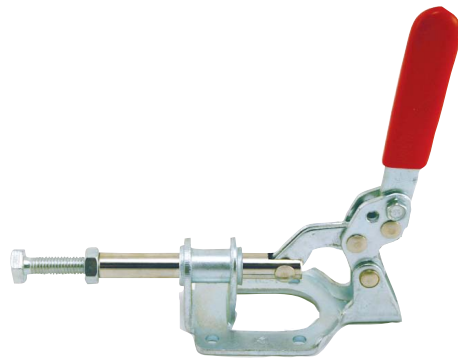
Horizontal Handle Toggle Clamp With U-Bar And Flange Base



88201 - Holding Capacity 59 Lbs.
88235 - Holding Capacity 815 Lbs.



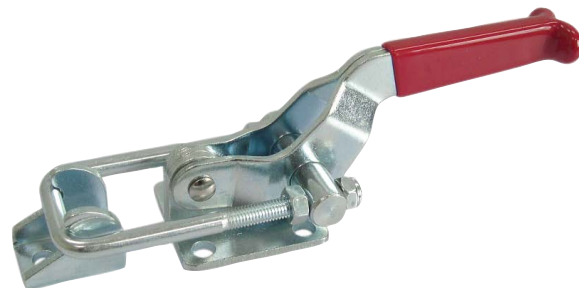
Push/Pull Handle Toggle Clamp With U-Bar And Flange Base



88302 - Holding Capacity 330 Lbs. - 1-1/4" Travel
88360 - Holding Capacity 397 Lbs. - 1-1/4" Travel
88362 - Holding Capacity 485 Lbs. - 1-1/8" Travel



Latch Handle Clamp



88404 - Holding Capacity 2,000 Lbs.

Toggle Pliers

MSI-50350



Cross Reference: DE-STA-CO 424
Holding Capacity: 200 lbs Max
Weight: 6.5oz
Call for Specifications and Pricing.

MSI-50360



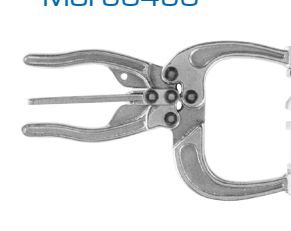
Cross Reference: DE-STA-CO 441
Holding Capacity: 350 lbs Max
Weight: 10.2oz
Call for Specifications and Pricing.

MSI-50380



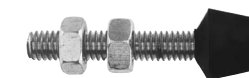
Cross Reference: DE-STA-CO 462
Holding Capacity: 700 lbs Max
Weight: 1.46lbs
Call for Specifications and Pricing.

MSI-50450



Cross Reference: DE-STA-CO 463
Holding Capacity: 700 lbs Max
Weight: 1.63lbs
Call for Specifications and Pricing.

Accessories



Flat Cushion-Tip Bonded Neoprene Cap

Model	Description
FC-10138	10-24 x 1 3/8
FC-14134	1/4 -20 x 1 3/4
FC-14218	1/4 -20 X 2 1/8
FC-56212	5/16 -18 X 2 1/2
FC-56300	5/16 -18 X 3
FC-38312	3/8 -16 X 3 1/2
FC-38412	3/8 -16 X 4 1/2
FC-12334	1/2 -13 X 3 3/4

Cone Cushion - Tip Bonded Neoprene Cap



Model	Description
CC-10138	10-24 x 1 3/8
CC-14134	1/4 -20 x 1 3/4
CC-14218	1/4 -20 X 2 1/8
CC-56212	5/16 -18 X 2 1/2
CC-38312	3/8 -16 X 3 1/2

Standard Adjustable



Model	Description
SA-08034	8-32 x 3/4 (NYLON)
SA-10118	10-24 X 1 1/8
SA-14112	1/4 -20 X 1 1/2
SA-14134	1/4 -20 X 1 3/4
SA-56200	5/16 -18 X 2
SA-56212	5/16 -18 X 2 1/2
SA-38300	3/8 -16 X 3
SA-38400	3/8 -16 X 4
SA-12300	1/2 -13 X 3
SA-12412	1/2 -13 X 4 1/2
SA-58500	5/8 -11 X 5

Swivel Foot Adjustable Spindle Assemblies



Model	Description
SF-14214	1/4 -20 x 2 1/4
SF-56234	5/16 -18 x 2 3/4
SF-38300	3/8 -16 x 3
SF-12400	1/2 -13 x 4

Flanged Washers For "U" Bar Clamps Only



Model	Description
FW-080	For 8 Spindle
FW-100	For 10 Spindle
FW-140	For 1/4 Spindle
FW-516	For 5/16 Spindle
FW-380	For 3/8 Spindle
FW-120	For 1/2 Spindle
FW-580	For 5/8 Spindle

Neoprene Caps



Slips on Standard Adjustable Spindle Heads

Model	Description
NC-140	For 1/4 Spindle
NC-516	For 5/16 Spindle
NC-380	For 3/8 Spindle
NC-120	For 1/2 Spindle

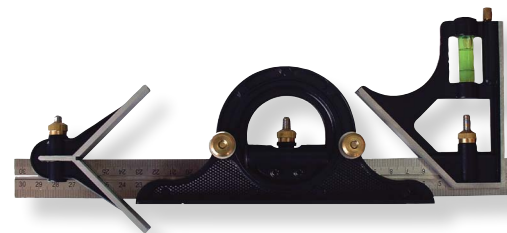
Index

Index

MSI-PRO Shop Tools

The PROMAX Advantage

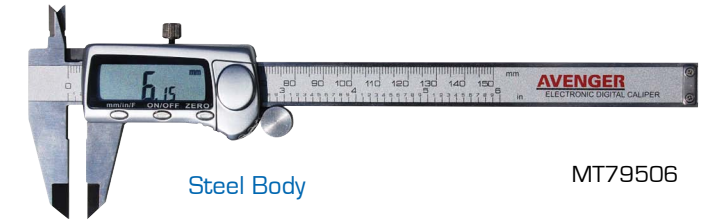
Promax Tool offers a complete line of wood boring tools, shop accessories and promotional tools for the contractor, Do-it-Yourselfers and woodworker.



Digital Caliper with Super Large Display

All digital calipers feature an oversized display for easy to read measurements in both Inches and Millimeters.

- Resolution: 0.01mm / 0.0005"
- Repeatability: 0.01mm / 0.0005"
- Accuracy: +/-0.02mm / +/-0.001"
- Power: 1.5v SR44 - 1 battery
- 6" and larger calipers have a built in interface port (RS-232 adapter) in the upper right side of the slider



Steel Body

MT79506

Item #	Description	Packaging
MT79304	4" Digital Fractional Caliper	Plastic Box
MT79306	6" Digital Fractional Caliper	Plastic Box
MT79308	8" Digital Fractional Caliper	Plastic Box
MT79312	12" Digital Fractional Caliper	Plastic Box
MT79506	6" Steel Body Digital Fractional Caliper	Plastic Box
MT79508	8" Steel Body Digital Fractional Caliper	Plastic Box
MT79512	12" Steel Body Digital Fractional Caliper	Plastic Box
MC0020	20" Digital Caliper*	Wood Case
MC0024	24" Digital Caliper*	Wood Case
MC0036	36" Digital Caliper*	Wood Case
MC0040	40" Digital Caliper*	Wood Case

Outer Jaw (O) Inner Jaw (I) Jaw Widest (W) Jaw Smallest (S) Screen Size *Special order ONLY

Item #	Size	Inches	MM	Inches	MM	Inches	MM	Inches	MM	Inches	MM
MC0020	20"	4.88	124	100	3.94	0.39	10	0.83	21	1.7x0.5	43.5x13.5
MC0024	24"	4.88	124	100	3.94	0.39	10	0.83	21	1.7x0.5	43.5x13.5
MC0036	36"	6.15	156.2	125	4.92	0.39	10	0.9	22.8	1.7x0.5	43.5x13.5
MC0040	40"	6.15	156.2	125	4.92	0.39	10	0.9	22.9	1.7x0.5	43.5x13.5

6" Stainless Steel Dial Calipers

- Positive Lock
- Accuracy .001" over 6" travel
- 4 way measurement: Inside, Outside, Depth and Step
- Frame is calibrated in inches and decimals
- MCD00006 marked in 0.001" increments
- MCDF00006 marked in 1/64" fractional increments and 0.01" decimals increments



MCD00006

Item #	Scale	Type
MCD00006	0 - .100"	Decimal

Index

Index

1" Travel Dial Indicator

- #4-48 thread, 3/8" stem
- Satin chrome finish case
- Adjustable bezel with clamp screw
- Lug Back
- Extremely accurate continuous dial reads 0 - 100



Item #	Range	Reading	Graduation
MDI00001	1.00"	0 - 100	.001"

Test Indicator Set



- Easy to read dial
- Satin chrome finish case
- Jeweled movement
- Furnished with 2 stems, 3/8" and 5/32" diameter
- Universal - 2 dovetails for back and top mounting plus screw in mounting of stems for greater versatility

Item #	Range	Reading	Graduation	Point
MTI00050	.30"	.0005"	.039" (1mm)	3/4"

Permanent Magnetic Stand

Swivel clamps on both the upright post and rigid arm provide near infinite positioning. The clamp on the rigid arm holds a 5/32" - 1/4" dia. dial indicator stem or a 1/4" lug-back style dial indicator. Bases have magnetic back and bottom, lever-style on/off switch, V-grooved bottom, and a fine adjustment knob. Up to 12" of reach and 45 lbs of magnetic pull. Used as a measuring tool holder for dial and test indicators.



Item #	L x W x H	Overall HT.	Fine ADJ.
AVMB00001	2.5 x 2 x 2.25	0-100	Course
AVMB00001-2	2.5 x 2 x 2.25	0-100	Fine

Outside Micrometers

- Reading .0001"
- Carbide Measuring Faces
- Positive Lever Lock
- Baked Enamel Frame



Item #	Range	Reading
MM00001	0 - 1"	.0001"
MM00012	1 - 2"	.0001"
MM00023	2 - 3"	.0001"
MM00034	3 - 4"	.0001"

Jig And Fixture Knobs

Item #	Description
79701	2" T-Knob 1/4" - 20
79702	2" T-Knob 3/8" - 16
79705	7-Star Insert 1/4" - 20
79706	7-Star Insert 3/8" - 16
79710	7-Star Stud 1/4" - 20
79712	7-Star Stud 5/16" - 18
79714	7-Star Stud 3/8" - 16
79720	Ball Knob 5/16" - 18
79725	Post Handle 5/16" - 18
79726	Ratchet Lever Bolt 5/16" - 18
79727	Ratchet Level Insert 5/16" - 18

Plastic knobs with metal stud or insert. Useful for making custom jigs and fixtures.



Diamond Wheel Dressers

Diamond Grinding Wheel Dresser

1/2" x 1-3/4" face of 36 grit diamond and sturdy knurled handle makes wheel dressing a quick and easy process.



24-00022

Hinge Bits

For Pre-Drilling Door Hinges

Available In Sizes:



Item #	Description	Drill Size	Drill Type
79140	#3 Equal to Vix #3	5/64"	Hss Split Point
79141	#5 Equal to Vix #5	7/64"	Hss Split Point
79142	#9 Equal to Vix #9	9/64"	Hss Split Point
79143	#12 Equal to Vix #12	11/64"	Hss Split Point
79144	#14 Equal to Vix #14	13/64"	Hss Split Point
79148	1/4" Shelf Pins	1/4"	Hss Brad Point
79149	5mm Shelf Pins	5mm	Hss Brad Point

Carbide Scribe With Magnet



06-00021

5/16" aluminum anodized handle, with 1/8" dia. tungsten carbide tip. Knurled for firm grip with pocket clip. This is the best scribe you will ever use.

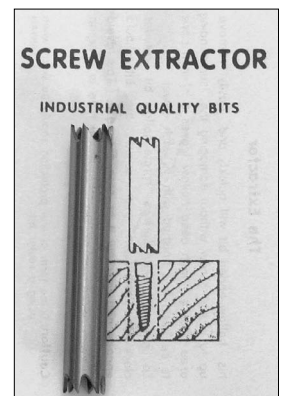
Saw Bushing Kit



12Pc Saw Bushing Kit
25-00012
5/8" TO 1/2", 3/4" TO 5/8"
1" TO 7/8", 1" TO 5/8"
1" TO 3/8"
5/8" TO DIAMOND

Screw Hole Extractors

Item #	Description
79615	Small Screw Extractor #8 Screw.OD 1/4"
79616	Medium Screw Extractor #10 Screw.OD 5/16"
79617	Large Screw Extractor #12 Screw.OD 3/8"
79618	Set Of All Three



Plated Diamond File Sets



24-00005 24-07093 24-00010 24-07071 24-07092

Needle File Sets

Item #	Description	Specifications
24-00005	5 Pc Set	Diamond 220 Grit, 5-1/2"
24-00010	10 Pc Set	Diamond 220 Grit, 5-1/2"

Riffler File Sets

Item #	Description	Specifications
24-07092	5 Pc Set	Diamond 220 Grit, 5-1/2"
24-07071	10 Pc Set	Diamond 60/80 Grit, 5-1/2"
24-07093	10 Pc Set	Diamond 220 Grit, 5-1/2"

1/2 HP Flex Shaft Grinder



91306 - 110 Volts
91307 - 220 Volts

Flex Shaft Grinder 1/2 HP Heavy Duty Flex Shaft Grinder

This unit features a 1/2 HP motor, foot pedal, 48" flexible shaft, two collet hand pieces, wrenches and a convenient hand attachment for hanging unit while in use.

Large Combination Squares



48" Combination Square - 87103
1/16th Inch Graduations - Metric & English

12" Combination Square

5 Tool in 1, Miter Square, Spirit Level, 45° Angle, Plumb, Height Gauge, Marking Gauge, Straight Edge, Steel Rule, Protractor Set and Center Head.



MT11012

4" Brass Vernier Caliper



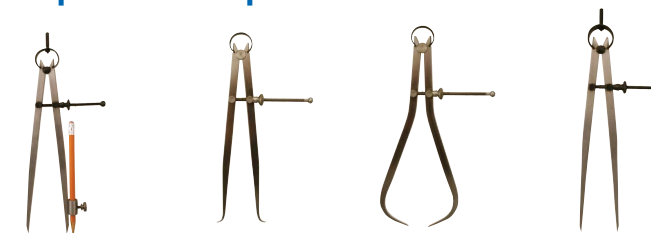
79552

6-Piece Measuring Set



79057B

Compass & Calipers



79058 79054 79052 79056

8" Divider & Compass With Pencil Poly-Bag 8" Inside Caliper Carded 8" Outside Caliper Carded 8" Dividers Carded

Protractors

6" Plastic Protractor



79070

Measures inside & outside angles

6" Stainless Steel Protractor

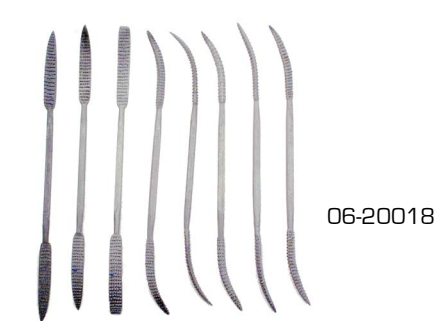


79317

Protractor & Saw Guide



79073



06-20018

Italian Style Wood Riffler Set
8Pc 7-1/2" Long
Heat Treated - Clamshell Pk.



06-20019

Heavy Duty Wood Riffler Set
8Pc 7-1/2" Long
Heat Treated - Clamshelled Pk.



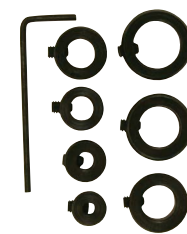
06-20020

Jumbo Wood Riffler Set
8Pc 9-1/2" Long
Heat Treated - Clamshell Pk.

7 Piece Stop Collar Set

Steel collars with set screw which locks into the flute of the drill. Easy to set. Sizes are 1/8", 3/16", 1/4", 5/16", 3/8", 7/16", and 1/2".

79038



All-In-One Glue Spreader Kit



79119



Glue Roller Bottle

Reusable glue bottle. 80z. Bottle

79044

Glue Bottles & Applicators

Glue Biscuit Applicator

Convenient way to slip glue evenly into all parts of the biscuit slot & apply glue to all surfaces. 8 ounce bottle



78081



78082

Glue Brush Applicator

Apply glue with this brush applicator. 8oz. bottle with cap.



Squeeze Bottle with Cap. 78083

5-In-One Glue Spreader Kit

Poly bagged with header card.

79118



Jointer Hone

Sharpening jig for honing both bevel and face sides of jointer and planer blades in place. Supplied with 180 and 400 grit stones 4" long.

79046

8-Piece Sanding Bands & Drums Kit



Rubber Drum sizes 1/2", 3/4", 1", 1-1/2". Two sets of fine (120 grit) and 2 sets of coarse (80 grit) abrasive sleeves.

79420

12-Pc 2" Long Sanding Drum Set

Set includes drum sizes 1/2 x 2, 3/4 x 2, 1 x 2, 1-1/2 x 2. All with 1/4" shank. Also includes one each 50 grit & 120 grit sanding sleeve.



79535



9-Pc - 3" Long Sanding Drum Set

Set includes drum sizes 1/2 X 3, 1 X 3, & 1-1/2 X 3. All with 1/4" shank. Also includes one each 50 grit & 120 grit sanding sleeve.

79540



Spring Miter Clamp Sets

79062

Item #	Description
79080	2-9/16 Small Clamp
79081	3-3/8 Medium Clamp
79082	4-3/16 Standard Clamp
79083	4-15/16 Large Clamp

Angular & Deeping Gauge

This gauge will test any angle and depths up to 1 inch.

79587



Steel Contour Gauge & Pattern Maker

Use this contour gauge for duplicating patterns

79063



Contour Gauges

The plastic fingers slide easily against one another. This makes for sensitive and accurate profile. 5" long.

5" Contour Gauge - A Left - 79064

5" Contour Gauge - B Right - 79065

10" Contour Gauge

The plastic fingers slide easily against one another. This makes for sensitive and accurate profile. 10" long.

79067



Angle Divider

Measures angles and at the same time gives you the miter cut angle. An indispensable tool for angular joinery.



Honing Guide

79117

Holds chisels and plane irons at the correct angles for honing. Adjustable in width and angle, hone rides on a wide roller.



79050

Drill Guide

3/8" Chuck 10mm

Cross Slide Lock

Positive Stop

Easy-to-read protractor scale

3/8" x 24 thread size:

3/8" shank

3/8" chuck

79251



Precision Solid Squares



Made from high quality tool steel with hardened blade fully ground.

Item #	Description
87002	2" Solid Square
87003	3" Solid Square
87004	4" Solid Square
87006	6" Solid Square
87009	9" Solid Square

Height Gauge

Measures the depth of cut of router bits and saw blades. Also mark distance and parallel lines on wood stock. Has magnetic base.

79068



Gauges & Protractors

Angle Checker

Handy gauge for quickly checking the sharpening angles of edge tools. Eight standard angles from 15° to 70°. Made of brass.



79585

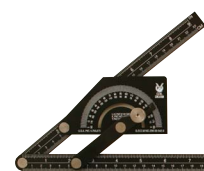
Thickness Gauge

Measures stock from 1/16" to 2" by 32nd. Quick and easy to use. Heavy aluminum construction 9-1/2" overall length.



79111

Large 15" Aluminum Protractor



Measures inside and outside angles

79071

Double Ended Feather Board



79074



For use with 3/4" T or Non-T miter slots. Includes T-Nuts and Expanding Nuts.

Wood Featherboard

Sturdy oak featherboard keeps stock against the fence and reduces kickback. Fits in standard slot.



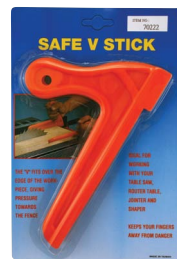
79134



Safety Push Stick

Features double-ended design so when one side gets nicked up the push stick can be flipped over for additional use.

70221



70222

Safety V-Stick

Narrow push stick is ideally suited for pushing thin stock through tablesaw or jointer. Features a narrow V-groove to hold work on edge.

Push Blocks

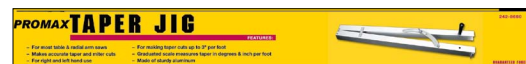
Straight Push Block 79072
Angled Push Block 79069

Soft sponge rubber sole for good gripping with comfortable handle.



Taper Jig

Used for cutting tapers on the tablesaw up to 3" per foot or 150 of taper. 24" long with scale, aluminum construction.



79066

Corner Chisel

A Handy Tool For Fitting Hinge Plates. Cuts 90° Corners.



79592

Center Finder

Locate center on round, square, hexagonal or octagonal stock up to 8".



79051



79587

Step Gauge

Extruded Aluminum Step Gauge works with your rip fence. Set the exact width and depth of cut on your table saw or radial arm saw.

Kennels, Greenhouses, Shelters, Temporary Fence Panels



Jewett-Cameron Offers Many Other Great Products...

Kennels -

All Jewett Cameron Kennels are designed with safety in mind. All kennels have a square corner design, 1" raised leg for cleaning and a lockable safety latch for security of your animal. Quality kennels are offered in either chain link or welded wire mesh construction.

Perimeter Patrol -

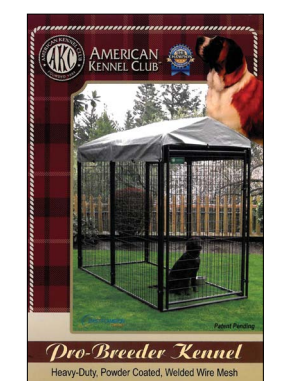
Premium temporary steel fence panel system. Panels are constructed of heavy duty 8 gauge welded wire mesh, with a durable powder coat finish. Several accessories are offered to ensure they system fits your needs. Panels and components can be shipped on a uniquely designed storage / transport pallet for years of service.

Greenhouses & Shelters -

Each unit is built with steel frames, contains all hardware needed, including a heavy duty polyethylene cover. 3 piece cover construction provides for a tight fit every time. Our Shelters offer some of the best clearance in the industry. Each unit is designed with practicality in mind, for years of service.

Adjust-A-Gate -

Our gate frame kits are "best in class" for applications ranging from 4' to 6' and higher fence projects including Wood, Composite and Vinyl materials. Steel construction, adjusts to most needed widths on the job site. Our kits allow you to build your gate right the first time, whether you are a Contractor or Homeowner.



Index

Index



Index

MSI-PRO

P.O. Box 1009
North Plains, OR 97133
Toll Free: (800) 424-7633
Phone: (503) 647-7351
Fax: (503) 647-2272

Jewett-Cameron Lumber Corporation

P.O. Box 1010
North Plains, OR 97133
Phone: (503) 647-0110
Toll Free: (800) 547-5877
Customer Service: (800) 955-2879
Fax: (503) 647-2272

Jewett-Cameron Seed Company

P.O. Box 816
North Plains, OR 97133
Phone: (503) 647-2293
Fax: (503) 647-2046

Greenwood Products, Inc.

PO Box 249
North Plains, OR 97133
Phone: (503) 670-9663
Toll Free: (800) 333-3898
Fax: (503)670-7755

Copyright © 2013, Jewett-Cameron Company
Catalog Price \$9.50