



2013 Distributor Price List



1-800-424-7633

MSI-PRO Products: www.msipro.com



2013 MSI-PRO Distributor Price List



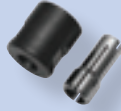
Item	Size	Description	QTY-1	Price\$-1	QTY-2	Price\$-2	QTY-3	Price\$-3
MSI-Pro Tools								
MP3011	1/4" Hex	Screwdriver, Straight, Pro, 22-52 In/Lb	1	\$398.57	3	\$378.64	10	\$340.78
MP530A	3", Angled 90* Head	Saw, Cut-Off Tool, Adj Speed	1	\$82.98	5	\$78.83	10	\$70.95
MP575	15-Pc Set	Sander, Mini-Belt, 3-Arm Kit	1	\$197.64	5	\$187.76	10	\$168.98
MP601KIT-A	6-Pc Set	Multi-Tool Kit	1	\$285.52	5	\$269.39	10	\$242.45
MP601KIT-B	3-Pc Set	Multi-Tool Kit	1	\$108.96	5	\$103.51	10	\$93.16
MP7016	-	Ratchet Thru-Hole Wrench	1	\$167.00	5	\$158.65	10	\$142.79
MP7058	1/4" Chuck	Drill, Rev, Pocket Series, 1,800 Rpm	1	\$63.75	5	\$60.56	10	\$54.51
MP7059	1/4" Anvil	Impact Wrench, Pocket Series	1	\$88.00	5	\$83.60	10	\$75.24
MP7074	1/4" Hex,- Quick Relea	Screwdriver, Pocket Series	1	\$83.00	5	\$78.85	10	\$70.97
MP711	1/4" Collet	Die Grinder, 20,000 Rpm - Pro Series	1	\$115.00	5	\$109.25	10	\$98.33
MP711L	1/4" Collet	Die Grinder, 12.6" Ext - Pro Series	1	\$190.99	5	\$181.44	10	\$163.30
MP719	3/8" & 1/4" Collet	Die Grinder, 1.1 Hp - Pro Series	1	\$155.04	5	\$147.29	10	\$132.56
MP7312	1/2" Anvil	Ratchet Adjustable Wrench	1	\$93.00	5	\$88.35	10	\$79.52
MP830	3/8" & 1/4" Collet	Die Grinder Hd W/Comf Grip - Pro Series	1	\$112.00	5	\$106.40	10	\$95.76
MP830L	3/8" & 1/4" Collet	Die Grinder Hd Ext, W/Comf Grip - Pro Se	1	\$157.00	5	\$149.15	10	\$134.24
MP832	3/8" & 1/4" Collet	Die Grinder 90* Angle Hd W/Comf Grip-Pro	1	\$188.00	5	\$178.60	10	\$160.74
MP854	4-1/2" Diameter	Grinder, 90' Angle, 1.3 Hp, 5/8-11	1	\$148.00	5	\$140.60	10	\$126.54
MP930LST	3/8" & 1/4" Collet	Die Grinder Hd Ext, Steel Body - Pro Ser	1	\$197.00	5	\$187.15	10	\$168.44
MP930ST	3/8" & 1/4" Collet	Die Grinder Hd, Steel Body - Pro Series	1	\$177.75	5	\$168.86	10	\$151.97
MP932ST	3/8" & 1/4" Collet	Die Grinder, 90* Angle Hd, Steel Bdy-Pro	1	\$237.00	5	\$225.15	10	\$202.64
MP961ST	1/4" Collet	Die Grinder Hd, Steel Mini - Pro Series	1	\$124.47	5	\$118.25	10	\$106.43
MSI911	5" Diameter	Grinder, 90' Angle, 10,000 Rpm, 5/8-11	1	\$147.36	2	\$140.34	10	\$129.11
SG0101R	Short	Air Hammer W/ Sa-1203 Retainer	1	\$17.00	5	\$16.15	20	\$14.53
SG0204R	Medium	Air Hammer W/Sa-1203 Retainer	1	\$21.46	5	\$20.39	20	\$18.35
SG0304R	Long	Air Hammer W/Sa-1203 Retainer	1	\$33.12	5	\$31.46	20	\$28.32
SG0315	Straight	Flux Chipper, Hd, 4,00 Bpm, 1-7/8" StroK	1	\$123.28	2	\$117.12	10	\$105.41
SG0315NS	19 Needles, 7"	Needle Scaler, Hd, 4,000 Bpm, 1-7/8" Str	1	\$157.51	2	\$149.63	10	\$134.67
SG0402	3", 4-1/2", 5-1/2" Pad	Sander , High Speed W/3-Pc Pad Set	1	\$29.18	5	\$27.72	20	\$24.95
SG0416	3-2/3" X 6-1/2"	Sander, Jitterbug	1	\$49.14	5	\$46.69	20	\$42.02
SG0420	6" Diameter	Sander, Dual Action	1	\$40.60	5	\$38.57	20	\$34.71
SG0430	2-1/2" X 15-3/4"	Sander, Straight Line	1	\$101.68	2	\$96.60	10	\$86.94
SG0470	7" Diameter	Sander, Angle	1	\$112.62	2	\$106.99	10	\$96.29
SG0472	7" Diameter	Polisher, Angle	1	\$143.85	2	\$136.66	10	\$122.99
SG0516	3" Wheel Capacity	Saw, Cut-Off Tool, 20,000 Rpm, 3/8" Arbo	1	\$31.24	5	\$29.67	20	\$26.71
SG0519	4" Diameter	Grinder, 90' Angle, 12,000 Rpm, 3/8-24	1	\$100.93	2	\$95.89	10	\$86.30
SG0522	7" Diameter	Grinder, 90' Angle, 7,000 Rpm, 5/8-11	1	\$237.17	2	\$225.31	10	\$202.78
SG0692	3/16" Diameter Hole	Punch/Crimp Combo Tool	1	\$64.58	3	\$61.35	15	\$55.21
SG0716	1/2" Anvil	Impact Wrench	1	\$101.85	2	\$96.76	10	\$87.08



High Horsepower Die Grinders Up to 1.5hp

Features

- Heavy duty construction for industrial high speed grinding
- Includes both 1/4" and 3/8" collets
- Ball bearing construction for longer tool life
- Variable speed throttle for positive speed control
- Cylinder constructed of high quality steel



Comfort Grip Body Die Grinders

Includes 1/4" and 3/8" Collets

MP-830
1.35HP Die Grinder
With Comfort Grip Body
Includes 1/4" & 3/8" Collets



MP-830L
1.0HP Extended Nose Die Grinder With Comfort Grip Body, Includes 1/4" & 3/8" Collets

Steel Body Die Grinders

Includes 1/4" and 3/8" Collets

MP-961ST
.5HP Die Grinder
Includes 1/4" Collet
Does not accept 3/8" collet



Includes rear exhaust hose

MP-832
1.25HP Right Angle Die Grinder
With Comfort Grip Body
Includes 1/4" & 3/8" Collets



MP-719
1.0HP Die Grinder
Includes 1/4" & 3/8" Collets



MP-932ST
1.40HP Right Angle Die Grinder Steel Body - Includes 1/4" & 3/8" Collets



MP-930ST
1.50HP Die Grinder Steel Body
Includes 1/4" & 3/8" Collets



MP-930LST
1.0HP Extended Nose Die Grinder Steel Body Includes 1/4" & 3/8" Collets



Warranty Information

- All Industrial air tools are warranted against defects in material and workmanship for six months.

Model	RPM	HP	Collets	Air Inlet Thread (N.P.T.)	Air Hose Size	Air Pressure (PSI)	Air Cons. (CFM)	Length	Weight (Lbs.)
MP-719	18,000	1	1/4" & 3/8"	1/4"	3/8"	90	5	7-1/2"	2.75
MP-830	20,000	1.35	1/4" & 3/8"	1/4"	3/8"	90	4.5	8-1/4"	2.05
MP-830L	18,000	1	1/4" & 3/8"	1/4"	3/8"	90	4.5	13"	2.75
MP-832	12,000	1.25	1/4" & 3/8"	1/4"	3/8"	90	4.5	9"	2.25
MP-930LST	18,000	1	1/4" & 3/8"	1/4"	3/8"	90	4.5	12-3/4"	3
MP-930ST	20,000	1.5	1/4" & 3/8"	1/4"	3/8"	90	4.5	7-1/2"	2.50
MP-932ST	12,000	1.4	1/4" & 3/8"	1/4"	3/8"	90	4.5	8-3/4"	3.25
MP-961ST	23,000	.5	1/4"	1/4"	3/8"	90	4.2	7-1/4"	1.50

2013 MSI-PRO Distributor Price List

Item	Size	Description	QTY-1	Price\$-1	QTY-2	Price\$-2	QTY-3	Price\$-3
SG0718	1/2" Anvil	Impact Wrench, 400 Ft/Lb	1	\$146.54	2	\$139.21	10	\$125.29
SG0718L	1/2" Anvil - 6" Long	Impact Wrench, 400 Ft/Lbs	Call for Quote					
SG0735	1/2" Anvil	Ratchet, H.D., 90 Ft/Lb, 150 Rpm	1	\$107.31	2	\$101.94	10	\$91.75
SG0740	3/4" Anvil	Impact Wrench, 500 Ft/Lb Torq, 5000 Rpm	1	\$147.00	2	\$139.65	10	\$125.69
SG0740L	3/4" Anvil - 4-1/2" L	Impact Wrench, 500 Ft/Lb Torq, 5000 Rpm	Call for Quote					
SG0750	3/4" Anvil	Impact Wrench, 700 Ft/Lb Torq, 4600 Rpm	1	\$184.69	2	\$175.45	10	\$157.91
SG0750L	3/4" Anvil - 4-1/2" L	Impact Wrench, 700 Ft/Lb Torq, 4600 Rpm	Call for Quote					
SG0784	3/8" Anvil	Impact Wrench, 160 Ft/Lb	1	\$94.56	3	\$89.83	15	\$80.85
SG0785	1/2" Anvil	Impact Wrench, 400 Ft/Lb	1	\$102.84	2	\$97.70	10	\$87.93
SG0785L	Special Order Only	Impact, 1/2" Anvil, 2" Long, 400 Ft	Call for Quote					
SG0786	3/4" Anvil	Impact Wrench, 850 Ft/Lb	1	\$174.43	2	\$165.71	10	\$149.14
SG0786L	3/4" Anvil - 6" Long	Impact Wrench, 850 Ft/Lb	Call for Quote					
SG0787	1" Anvil	Impact Wrench, 1,300 Ft/Lb	1	\$282.47	2	\$268.34	10	\$241.51
SG0787L	1" Anvil - 6" Long	Impact Wrench, 1,300 Ft/Lb	Call for Quote					
SG0810	1,600 # Traction	Riveter, Standard, Cap: 3/16"	1	\$65.99	3	\$62.68	15	\$56.42
SG0822	-	Saw, Body Saw, 10,000 Rpm	1	\$67.00	3	\$63.65	15	\$57.28
SG0825	-	File, Air File, 3,700 Rpm, 1/8" Stroke	1	\$98.00	3	\$93.10	15	\$83.79
SG0909	1/4" Hex - Straight	Screwdriver, Adj Clutch, 1500 Rpm	1	\$70.33	3	\$66.82	15	\$60.14
SG0912	Straight	Screwdriver, Auto-Air-Shut Off, 1000 Rpm	1	\$194.25	2	\$184.54	10	\$166.08
SG1046	1.0 Liter Cup	Spray Gun, Standard, 1.5Mm Tip	1	\$60.69	3	\$57.66	15	\$51.89
SG1052	0.3 Liter Cup	Spray Gun, Touch Up Gun, 1,8Mm Tip	1	\$39.63	5	\$37.65	20	\$33.89
SG1054	0.6 Liter Cup	Spray Gun, H.V.L.P., 1.4Mm Tip	1	\$100.93	2	\$95.89	10	\$86.30
SG1222GUN	-	Wonder Gun (Gun Only)	1	\$20.93	5	\$19.93	20	\$17.94
SG1222KIT	Blower/Vacuum	Wonder Gun Kit - Gun Hose, Bag, Access.	1	\$25.73	5	\$24.44	20	\$21.99
SG2711R	Short	Air Hammer, Hd W/Sa-1203A Retainer	1	\$42.00	5	\$39.90	20	\$35.91
SG2715R	Medium	Air Hammer, Hd W/Sa-1203A Retainer	1	\$46.75	5	\$44.41	20	\$39.97
SG7925	7" Diameter	Grinder, Vert Grinder, 2.25 Hp, 5/8-11	1	\$245.23	2	\$232.97	10	\$209.67
SG9121	7" Chisel, 1.4" Blade	Flux Chipper, 4,600 Bpm, 1-1/8" Stroke	1	\$100.72	2	\$95.68	10	\$86.11
SG9121NS	19 Needles, 7"	Needle Scaler, 4,600 Bpm, 1-1/8" Stroke	1	\$104.76	2	\$99.52	10	\$89.57
SG9908	2-5/8" Dia. Cartridge	Caulking Gun, Lrg Cartridge	1	\$40.00	5	\$38.00	10	\$34.20
SG9925	9" Diameter	Grinder, Vert Grinder, 3.5 Hp, 5/8-11	1	\$373.26	2	\$354.59	10	\$319.14
SM115C1	3,500 # Traction	Riveter, Hd, Composite Body, Cap: 1/4"	1	\$199.50	2	\$189.53	10	\$170.57
SM204	18 Ga. Capacity	Shears, Pistol Grip, 2,800 Rpm	1	\$70.45	3	\$66.93	15	\$60.23
SM204S	18 Ga. Capacity	Shears, Straight Grip, 2,200 Rpm	1	\$60.38	3	\$56.51	15	\$50.86
SM213	Up To 16 Ga	Air Nibbler, 3500 Rpm	1	\$59.48	3	\$56.51	15	\$50.86
SM28143	23 Needles, 7"	Needle Scaler, Pistol Grip	1	\$173.25	2	\$164.59	10	\$148.13
SM30	3/8" Anvil	Ratchet Wrench, 45 Ft/Lb, 150 Rpm	1	\$32.51	5	\$30.89	20	\$27.80
SM31	1/2" Anvil	Ratchet Wrench, 45 Ft/Lb, 150 Rpm	1	\$32.55	5	\$30.92	20	\$27.83
SM3718	1/4" Anvil	Impact Wrench, Composite	1	\$82.32	3	\$78.20	15	\$70.38
SM37194	3/8" Anvil	Impact Wrench, Hd, Composite, Twin Hamme	1	\$131.15	2	\$124.59	10	\$112.13
SM3831	4" Diameter	Grinder, 14.5" Ext Corner, 17,000 Rpm	1	\$149.63	2	\$142.15	10	\$127.94
SM401A	3/8" Anvil	Impact Wrench, Butterfly Style	1	\$41.86	5	\$39.77	20	\$35.79
SM403	1/2" Anvil	Impact Wrench, 280 Ft/Lb Torq, 7000 Rpm	1	\$46.20	5	\$43.89	20	\$39.50
SM403L	Special Order	Impact Wrench, 1/2" Anvil, 1" L Anvil	Call for Quote					
SM501	1/4" Collet	Die Grinder, Straight, Frt Exh	1	\$42.25	5	\$40.14	20	\$36.13
SM50110	1/2" Anvil	Impact Wrench, Hd, Twin Hammer, Compos	1	\$183.43	2	\$174.26	10	\$156.83



Multi-Function Air Tools

With Interchangeable Heads



MP-601KIT-A

6pc Set - Includes Motor, Jig Saw, Drill, Circle Hole Cutter, Sander & Shear Multi-Function Tools

MP-601KIT-B

3pc Set - Includes Motor, Die Grinder & Cut Off Tool Multi-Function Tools



MP-7312

1/2" Adjustable Head Ratchet

MP-854

4.5" Heavy Duty Angle Grinder 5/8"-11 Arbor



Ratchet and Sander Tools

Compact Series Air Tools



MP-7058

1/4" Drill Compact Series



MP-7059

1/4" Impact Compact Series



MP-7074

Screwdriver with quick change chuck Compact Series

MP-7016

Thru-Hole Ratchet Wrench Kit with 1/4", 3/8", 7/16" & 1/2" Socket plus 3/8" adapter



MP-575

3-Arm 15pc Mini-Belt Sander Kit
18" x 3/8" Sanding Belt
18" x 1/2" Sanding Belt
18" x 3/4" Sanding Belt

Model	RPM	HP	Torque	Air Inlet Thread (N.P.T.)	Air Hose Size	Air Pressure (PSI)	Air Cons. (CFM)	Length	Weight (Lbs.)
MP-575	16,000	.5	-	1/4"	3/8"	90	4.2	14"	2.75
MP-601KIT-A	-	-	-	1/4"	3/8"	90	-	-	-
MP-601KIT-B	-	-	-	1/4"	3/8"	90	-	-	-
MP-854	11,000	1.3	-	1/4"	3/8"	90	4.2	9"	4
MP-7016	450	-	30 Ft-Lb	1/4"	3/8"	90	4.5	-	-
MP-7058	1,800	.38	-	1/4"	3/8"	90	13.7	7-1/4"	1.75
MP-7059	11,000	-	50 Ft-Lb	1/4"	3/8"	90	12.6	6-1/2"	1.50
MP-7074	11,000	-	50-Ft-Lb	1/4"	3/8"	90	12.6	6-1/2"	1.50
MP-7312	180	-	50-Ft-Lb	1/4"	3/8"	90	5	8-1/4"	1.50

2013 MSI-PRO Distributor Price List

Item	Size	Description	QTY-1	Price\$-1	QTY-2	Price\$-2	QTY-3	Price\$-3
SM502	3/8" Chuck	Drill, Straight Hi-Spd, 22,000 Rpm	1	\$35.70	5	\$33.92	20	\$30.52
SM508	1/4" Collet	Die Grinder, Mini Straight, 24,000 Rpm	1	\$16.90	5	\$16.06	20	\$14.45
SM512	1/4" Collet	Die Grinder, Straight, Rear Exh	1	\$23.63	5	\$22.44	20	\$20.20
SM512E-9	1/4" Collet	Die Grinder, Ext. 9"	1	\$67.19	3	\$63.83	15	\$57.44
SM512K	1/4" Collet	Die Grinder Kit (Grinder, 10 Pc Stones)	1	\$36.23	5	\$34.41	20	\$30.97
SM517	1/8" Collet	Die Grinder, Micro, 56,000 Rpm	1	\$99.75	3	\$94.76	15	\$85.29
SM518	30Mm Diameter	Die Grinder, Micro, 90' Angle, 23000 Rpm	1	\$113.91	2	\$108.22	10	\$97.35
SM522	1/4" Collet	Die Grinder, 90' Angle, 22,000 Rpm	1	\$47.81	5	\$45.42	20	\$40.88
SM524	1/4" Collet	Die Grinder, 100' Angle, Gearless	1	\$43.56	5	\$41.38	20	\$37.24
SM532	1/4" Collet	Die Grinder, Straight, Rear Exh	1	\$26.25	5	\$24.94	20	\$22.44
SM545	1/4" Collet	Die Grinder, Straight, High Torque	1	\$62.48	3	\$59.35	15	\$53.42
SM550	1/4" Collet	Die Grinder, 105' Angle, Hd	1	\$101.99	2	\$96.89	10	\$87.21
SM550-2	4" Diameter	Grinder, 105' Angle, Hd, 5/8-11	1	\$105.52	2	\$100.24	10	\$90.22
SM551-2	1/4" Collet	Die Grinder, Straight, Hd, 20,000 Rpm	1	\$72.59	3	\$68.96	15	\$62.06
SM552-2	1/4" Collet	Die Grinder, Straight, Hd, 18,000 Rpm	1	\$100.42	2	\$95.40	10	\$85.86
SM555-3	4" Diameter	Grinder, 90' Angle, Hd, 5/8-11	1	\$107.78	2	\$102.39	10	\$92.15
SM604-5	5" Diameter	Random Orbital Sander	1	\$100.08	2	\$95.07	10	\$85.57
SM604-6	6" Diameter	Random Orbital Sander	1	\$107.90	2	\$102.51	10	\$92.25
SM605	5" Diameter	Sander, Random Orbital 10,000 Rpm	1	\$113.26	2	\$107.59	10	\$96.83
SM606-2	1/4" X 13"	Sander, Mini-Belt	1	\$129.73	2	\$123.24	10	\$110.92
SM6074	3/4" Anvil	Impact Wrench - Composite	1	\$376.10	2	\$357.30	10	\$321.57
SM610-2	3/8" X 13"	Sander, Mini-Belt, Stl Wheel	1	\$115.50	2	\$109.73	10	\$98.75
SM612-2	1/2" X 24"	Sander, Mini-Belt, Stl Wheel	1	\$151.73	2	\$144.14	10	\$129.72
SM614	1/4" X 13"	Sander, Mini-Belt W/Speed Control Tab	1	\$129.73	2	\$123.24	10	\$110.92
SM620-2	3/4" X 20-1/2"	Sander, Mini-Belt W/Rub Grip, Rub Wheel	1	\$133.44	2	\$126.76	10	\$114.09
SM620-2S	3/4" X 20-1/2"	Sander, Mini-Belt W/Rub Grip, Stl Wheel	1	\$133.44	2	\$126.77	10	\$114.09
SM638	3/8" X 13"	Sander, Mini-Belt W/Speed Control Tab	1	\$115.50	2	\$109.73	10	\$98.75
SM701	3/8" Chuck	Drill, Pistol Grip, 2,200 Rpm	1	\$47.22	5	\$44.86	20	\$40.37
SM704	1/2" Chuck	Drill, Pistol Grip, Reversible, 500 Rpm	1	\$82.23	3	\$78.12	15	\$70.31
SM705	3/8" Chuck	Drill, Pistol Grip, Rev, 1,800 Rpm	1	\$49.88	5	\$47.38	20	\$42.64
SM709	3/8" Chuck	Drill, Str W/Angle Head, 1,900 Rpm	1	\$74.50	3	\$70.78	15	\$63.70
SM709R	3/8" Chuck	Drill, Str W/Angle Head, Rev, 1,400 Rpm	1	\$79.39	3	\$75.42	15	\$67.88
SM710	3/8" Chuck	Drill, Straight Grip, 2,600 Rpm	1	\$50.62	3	\$48.09	15	\$43.28
SM714	7-1/4"	Saw, Circular Saw W/O Blade, 4,500 Rpm	1	\$183.07	2	\$173.91	10	\$156.52
SM802	1/4" Hex	Screwdriver, Adj Clutch, 1,800 Rpm	1	\$75.85	3	\$72.06	15	\$64.85
SM803	1/4" Hex	Screwdriver, Adj Clutch, 800 Rpm	1	\$90.81	3	\$86.27	15	\$77.64
SM804	1/4" Hex	Screwdriver, Positive Clutch, 1,800 Rpm	1	\$63.53	3	\$60.35	15	\$54.31
SM806	1/4" Hex	Screwdriver, Positive Clutch, 800 Rpm	1	\$82.29	3	\$78.17	15	\$70.35
SM814	1/4" Hex,	Screwdriver, Hd Pistol Type	1	\$106.13	2	\$100.83	10	\$90.74
SM842	1/4" Hex	Screwdriver, Adj Clutch 1,800 Rpm	1	\$86.10	3	\$81.80	15	\$73.62
SM843	1/4" Hex	Screwdriver, Adj Clutch 800 Rpm	1	\$106.75	2	\$101.41	10	\$91.27
SM883	1/4" Hex	Screwdriver, Hd, 800 Rpm, Ext. Adj	1	\$224.23	2	\$213.02	10	\$191.72
SM926	2-15/16" X 3-7/32"	Sander, Turbine Palm, 11,000 Rpm	1	\$62.28	5	\$59.17	20	\$53.25
SM927	4-1/2" X 5-1/2"	Sander, Turbine Palm, 20,000 Rpm	1	\$84.77	5	\$80.53	20	\$72.48
SPT101	1" Wide Blade	Gasket Scraper, 4,800 Spm, 1/8" Stroke	1	\$37.28	5	\$35.41	20	\$31.87

Item	Size	Description	QTY-1	Price\$-1	QTY-2	Price\$-2	QTY-3	Price\$-3
Tool - Accessories								
AHP20	-	Ahp-20 Rotor	1	\$14.00	-	-	-	-
DCW4	-	Diamond Cup Wheel (4" Size)	1	\$40.00	-	-	-	-
G102	-	Retainer, Quick Change Retain	1	\$15.00	-	-	-	-
G301	-	Mini Oiler, Inline (G301)	1	\$5.41	-	-	-	-
KSA1012	9/32"	Jacobs Chuck Key For Sa1012/Sa1212	1	\$4.50	-	-	-	-
KSA1038	1/4"	Jacobs Chuck Key For Sa1038	1	\$3.00	-	-	-	-
KSA2012	1/4"	Jacobs Chuck Key For Sa2012/Sa2212	1	\$3.00	-	-	-	-
KSA2038	15/64"	Jacobs Chuck Key For Sa2038	1	\$3.00	-	-	-	-
KSA3075	3/8"	Jacobs Chuck Key For Sa3075	1	\$6.50	-	-	-	-
MP71938	3/8"	Collet And Collet Cap	1	\$16.20	-	-	-	-
MP9305ORE	-	Exhaust Extention Tube, Rear - Std Die	1	\$31.82	-	-	-	-
MP9615ORE	-	Exhaust Extention Tube, Rear - Mini Die	1	\$20.76	-	-	-	-
RL214	1/4" Arbor	Roll-Lock, 2" Twist Disc Holder	1	\$2.97	-	-	-	-
SA1010	1/4", 3/8-24	Jacobs Chuck Multicraft Keyed Type	1	\$7.50	-	-	-	-
SA1012	1/2", 1/2-20	Jacobs Chuck Multicraft Keyed Type	1	\$14.00	-	-	-	-
SA1038	3/8", 3/8-24	Jacobs Chuck Multicraft Keyed Type	1	\$12.00	-	-	-	-
SA1201	-	Retainer, Safety Retainer	1	\$7.50	-	-	-	-
SA1203	-	Retainer, Standard	1	\$3.75	-	-	-	-
SA1203A	-	Retainer, Double Coil	1	\$5.42	-	-	-	-
SA1203B	-	Retainer, Beehive	1	\$4.15	-	-	-	-
SA1205	-	Needle Scaler Attachment For Air Hammer	1	\$32.10	-	-	-	-
SA1212	1/2", 3/8-24	Jacobs Chuck Multicraft Keyed Type	1	\$16.00	-	-	-	-
SA2012	1/2", 1/2-20	Jacobs Chuck Professional Keyed Type	1	\$32.00	-	-	-	-
SA2038	3/8", 3/8-24	Jacobs Chuck Professional Keyed Type	1	\$25.00	-	-	-	-
SA2212	1/2", 3/8"-24	Jacobs Chuck Multicraft Keyed Type	1	\$32.50	-	-	-	-
SA2500	3/8" (10Mm), 3/8-24	Jacobs Chuck Keyless Type	1	\$10.30	-	-	-	-
SA2525	3/8" (13Mm), 3/8-24	Jacobs Chuck Keyless Type	1	\$20.00	-	-	-	-
SA2550	1/2" (13Mm), 3/8-24	Jacobs Chuck Keyless Type	1	\$22.75	-	-	-	-
SA2575	1/2" (13Mm), 1/2-20	Jacobs Chuck Keyless Type	1	\$23.75	-	-	-	-
SA9121C	1-7/16" X 7"	Chisel, Flat Blade, Sq Shaft W/Notch	1	\$23.25	-	-	-	-
SG1063	-	Air Blow Gun W/ 2 Tips	1	\$3.50	-	-	-	-
SG1222HK-10	10 Ft. Hose & 2 Cuffs	Vacuum Hose & Cuff Kit, 10 Ft. Hose	1	\$27.50	-	-	-	-
SG1222HK-5	5 Ft. Hose & 2 Cuffs	Vacuum Hose & Cuff Kit, 5 Ft. Hose	1	\$18.25	-	-	-	-
SG1304	.401 Shank, 5" Long	Chisel Set, 4-Pc	1	\$8.35	-	-	-	-
SG1306	.401 Shank, 5" Long	Chisel Set, 6-Pc	1	\$9.30	-	-	-	-
SG1309	.401 Shank	Chisel Set, 9-Pc	1	\$14.45	-	-	-	-
SG2016-25	3/8" X 25 Ft.	Rubber Air Hose, 25 Ft, Pliovic 250	1	\$15.00	-	-	-	-
SG2016-50	3/8" X 50 Ft.	Rubber Air Hose, 50 Ft, Pliovic 250	1	\$25.00	-	-	-	-
SG9052	-	Air Regulator, Mini In-Line	1	\$3.75	-	-	-	-
WSP100	3"	Pad, Wet Polishing Pad - 100 Grit	1	\$9.00	-	-	-	-
WSP200	3"	Pad, Wet Polishing Pad - 200 Grit	1	\$9.00	-	-	-	-
WSP3000	3"	Pad, Wet Polishing Pad - 3000 Grit	1	\$9.00	-	-	-	-
WSP400	3"	Pad, Wet Polishing Pad - 400 Grit	1	\$9.00	-	-	-	-
WSP50	3"	Pad, Wet Polishing Pad - 50 Grit	1	\$9.00	-	-	-	-

2013 MSI-PRO Distributor Price List

Item	Size	Description	QTY-1	Price\$-1	QTY-2	Price\$-2	QTY-3	Price\$-3
WSP800	3"	Pad, Wet Polishing Pad - 800 Grit	1	\$9.00	-	-	-	-
WSPBUFF	3"	Pad, Wet Buff Pad, Dark Finish	1	\$9.00	-	-	-	-
WSPBUFFWHT	3"	Pad, Wet Buff Pad, Light Finish	1	\$9.00	-	-	-	-
Toggle Clamps								
MSI101A	100 # Hold Capacity	Vert Hndl Toggle Clamp	1	\$6.39	5	\$6.07	20	\$5.46
MSI10247	1,000 # Hold Capacity	Vert Hndl Toggle Clamp	1	\$22.24	5	\$21.13	20	\$19.02
MSI12050	200 # Hold Capacity	Vert Hndl Toggle Clamp, Fixed Arm	1	\$7.18	5	\$6.82	20	\$6.14
MSI12070	200 # Hold Capacity	Vert T-Hndl Toggle Clamp	1	\$8.69	5	\$8.26	20	\$7.43
MSI12130	500 # Hold Capacity	Vert Hndl Toggle Clamp	1	\$7.46	5	\$7.09	20	\$6.38
MSI12131	500 # Hold Capacity	Vert T-Hndl Toggle Clamp	1	\$9.45	5	\$8.98	20	\$8.08
MSI12132	500 # Hold Capacity	Vert Hndl Toggle Clamp	1	\$10.41	5	\$9.89	20	\$8.90
MSI12133	500 # Hold Capacity	Vert T-Hndl Toggle Clamp	1	\$14.29	5	\$13.61	20	\$12.25
MSI12134	450 # Hold Capacity	Vert Hndl Toggle Clamp	1	\$6.45	5	\$6.13	20	\$5.51
MSI12265	750 # Hold Capacity	Vert Hndl Toggle Clamp	1	\$15.75	5	\$14.96	20	\$13.47
MSI1305	150 # Hold Capacity	Vert Hndl Toggle Clamp	1	\$4.50	5	\$4.28	20	\$3.85
MSI201	60 # Hold Capacity	Horz Hndl Toggle Clamp	1	\$6.15	5	\$5.84	20	\$5.26
MSI201B	200 # Hold Capacity	Horz Hndl Toggle Clamp	1	\$6.83	5	\$6.48	20	\$5.84
MSI20235	750 # Hold Capacity	Horz Hndl Toggle Clamp	1	\$13.74	5	\$13.05	20	\$11.75
MSI217	200 # Hold Capacity	Horz Hndl Toggle Clamp	1	\$8.65	5	\$8.22	20	\$7.40
MSI225D	500 # Hold Capacity	Horz Hndl Toggle Clamp	1	\$6.41	5	\$6.08	20	\$5.48
MSI227	500 # Hold Capacity	Horz Hndl Toggle Clamp	1	\$7.97	5	\$7.57	20	\$6.81
MSI302F	300 # Hold Capacity	Push/Pull Toggle Clamp	1	\$8.94	5	\$8.49	20	\$7.64
MSI304E	850 # Hold Capacity	Push/Pull Toggle Clamp	1	\$16.20	5	\$15.39	20	\$13.85
MSI36003	600 # Hold Capacity	Push/Pull Toggle Clamp	1	\$32.34	5	\$30.72	20	\$27.65
MSI36010	800 # Hold Capacity	Push/Pull Toggle Clamp	1	\$15.74	5	\$14.95	20	\$13.46
MSI36202	200 # Hold Capacity	Push/Pull Toggle Clamp	1	\$9.50	5	\$9.03	20	\$8.12
MSI36204	300 # Hold Capacity	Push/Pull Toggle Clamp	1	\$19.85	5	\$18.85	20	\$16.97
MSI36224	700 # Hold Capacity	Push/Pull Toggle Clamp	1	\$10.50	5	\$9.98	20	\$8.98
MSI36330	2,500 # Hold Capacity	Push/Pull Toggle Clamp, Forged Base	1	\$24.12	5	\$22.91	20	\$20.62
MSI36609	300 # Hold Capacity	Push/Pull Toggle Clamp	1	\$13.50	5	\$12.83	20	\$11.54
MSI40323	360 # Hold Capacity	Latch Type Toggle Clamp	1	\$8.21	5	\$7.80	20	\$7.02
MSI40324	500 # Hold Capacity	Latch Type Toggle Clamp	1	\$21.50	5	\$20.48	20	\$19.50
MSI40334	1,000 # Hold Capacity	Latch Type Toggle Clamp	1	\$24.00	5	\$22.80	20	\$20.52
MSI40341	2,000 # Hold Capacity	Latch Type Toggle Clamp	1	\$11.37	5	\$10.80	20	\$9.72
MSI40371	750 # Hold Capacity	Hook Type Toggle Latch	1	\$13.45	5	\$12.81	20	\$11.53
MSI40380	7,500 # Hold Capacity	Latch Type Toggle Clamp, Blk Forged Base	1	\$48.07	5	\$45.67	20	\$41.10
MSI431	700 # Hold Capacity	Latch Type Toggle Clamp	1	\$6.50	5	\$6.18	20	\$5.56
MSI431B	700 # Hold Capacity	Latch Type Toggle Clamp, Black Handle	1	\$6.50	5	\$6.18	20	\$5.56
MSI451	375 # Hold Capacity	Hook Type Toggle Latch, 20-Degree Hook	1	\$9.34	5	\$8.87	20	\$7.99
MSI451C	375 # Hold Capacity	Hook Type Toggle Latch, 45-Degree Hook	1	\$14.28	5	\$13.60	20	\$12.24
MSI50350	200 # Hold Capacity	Squeeze-Action, Toggle Pliers	1	\$18.44	5	\$17.52	20	\$15.76
MSI50360	350 # Hold Capacity	Squeeze Action, Toggle Pliers	1	\$24.14	5	\$22.93	20	\$20.64
MSI50380	350 # Hold Capacity	Squeeze Action, Toggle Pliers	1	\$34.65	5	\$32.92	20	\$29.63
MSI50450	700 # Hold Capacity	Squeeze Action, Toggle Pliers	1	\$40.88	5	\$38.84	20	\$34.95
PM88201	Retail Pk (201)	Horz Hndl Toggle Clamp, 59#	1	\$3.05	5	\$2.90	20	\$2.61
PM88235	Retail Pk (20235)	Horz Hndl Toggle Clamp, 815#	1	\$7.43	5	\$7.06	20	\$6.35

Item	Size	Description	QTY-1	Price\$-1	QTY-2	Price\$-2	QTY-3	Price\$-3
PM88302	Retail Pk (302F)	Push/Pull Toggle Clamp, 330#, W/Bolt Spn	1	\$6.88	5	\$6.54	20	\$5.88
PM88360	Retail Pk (36609)	Push/Pull Toggle Clamp, 397#, W/Bolt Spn	1	\$7.32	5	\$6.95	20	\$6.26
PM88362	Retail Pk	Push/Pull Toggle Clamp, 485#, W/Bolt Spn	1	\$7.32	5	\$6.95	20	\$6.26
PM88431	Retail Pk (431)	Latch Type Toggle Clamp, 700#	1	\$4.49	5	\$4.27	20	\$3.84
Toggle Clamps - Accessories								
MSICC14134	1/4-20 X 1-3/4"	Spindle, Cone Cushion Neoprene Tipped	1	\$0.84	-	-	-	-
MSICC14218	1/4-20 X 2-1/8"	Spindle, Cone Cushion Neoprene Tipped	1	\$0.98	-	-	-	-
MSICC38312	3/8-16 X 3-1/2"	Spindle, Cone Cushion Neoprene Tipped	1	\$1.30	-	-	-	-
MSICC56212	5/16-18 X 2-1/2"	Spindle, Cone Cushion Neoprene Tipped	1	\$1.15	-	-	-	-
MSIFC10138	10-24 X 24	Spindle, Flat Cushion Neoprene Tipped	1	\$1.72	-	-	-	-
MSIFC12334	1/2-13 X 3-3/4"	Spindle, Flat Cushion Neoprene Tipped	1	\$4.10	-	-	-	-
MSIFC14134	1/4-20 X 1-3/4"	Spindle, Flat Cushion Neoprene Tipped	1	\$2.19	-	-	-	-
MSIFC14218	1/4-20 X 2-1/8"	Spindle, Flat Cushion Neoprene Tipped	1	\$2.93	-	-	-	-
MSIFC38312	3/8-16 X 3-1/2"	Spindle, Flat Cushion Neoprene Tipped	1	\$2.19	-	-	-	-
MSIFC38412	3/8-16 X 4-1/2"	Spindle, Flat Cushion Neoprene Tipped	1	\$2.38	-	-	-	-
MSIFC56212	5/16-18 X 2-1/2"	Spindle, Flat Cushion Neoprene Tipped	1	\$1.56	-	-	-	-
MSIFC56300	5/16-18 X 3"	Spindle, Flat Cushion Neoprene Tipped	1	\$1.95	-	-	-	-
MSIFW140	1/4"	Washer, Flanged For Spindle	Call for Quote					
MSIFW380	3/8"	Washer, Flanged For Spindle	Call for Quote					
MSIFW516	5/16"	Washer, Flanged For Spindle	Call for Quote					
MSINC120	1/2"	Cap, Neoprene For Spindle	Call for Quote					
MSINC140	1/4"	Cap, Neoprene For Spindle	Call for Quote					
MSINC380	3/8"	Cap, Neoprene For Spindle	Call for Quote					
MSINC516	5/16"	Cap, Neoprene For Spindle	Call for Quote					
MSISA12300	1/2-13 X 3"	Spindle, Standard Adjustable	1	\$0.69	-	-	-	-
MSISA12412	1/2-13 X 4-1/2"	Spindle, Standard Adjustable	1	\$0.75	-	-	-	-
MSISA56212S	5/16-18 X 2"	Spindle, Standard Adjustable	1	\$1.08	-	-	-	-
MSISF12400	1/2-13 X 4"	Spindle, Swivel Foot Adjustable	1	\$2.25	-	-	-	-
MSISF14214	1/4-20 X 2-1/4"	Spindle, Swivel Foot Adjustable	1	\$1.35	-	-	-	-
MSISF38300	3/8-16 X 3"	Spindle, Swivel Foot Adjustable	1	\$1.41	-	-	-	-
MSISF56234	5/16-18 X 2-3/4"	Spindle, Swivel Foot Adjustable	1	\$1.38	-	-	-	-
Saw Blades								
AV10019	10" X 60T	Compound Miter Saw Blade, 5/8", C-3, Atb	1	\$24.63	5	\$24.03	15	\$23.40
AV10021	10" X 24T	Rip Saw Blade, 5/8", C-3, Atb	Call for Quote					
AV10022	10" X 40T	Combo Blade, 5/8", C-3, Atb	1	\$14.21	5	\$19.78	15	\$13.50
AV10023	10" X 80T	Compound Miter Saw Blade, 5/8", C-3, Atb	1	\$17.43	5	\$25.83	15	\$16.55
AV10026	8" X 42T	Stack Dado Set, 5/8", C-4	1	\$44.88	5	\$42.64	10	\$40.51
AV10028	10" X 50T	Combo Novelty Blade, 5/8", C-3, 2&1	1	\$22.60	5	\$22.04	25	\$21.47
AV10031	8" X 30T, 5T Chippers	Stack Dado Set, 5/8", C4	1	\$41.46	5	\$39.39	10	\$37.42
AV10080	10" X 80T	Steel Cutting Blade, 5/8", C-6, Tcg	1	\$27.55	5	\$35.33	15	\$26.17
AV10900	10"X100t	Alum Cutting Blade, 5/8", C-4, Tcg	1	\$42.75	5	\$40.03	15	\$40.61
AV12012	12" X 12T	Rescue Saw Blade, 1"/20Mm Bush, C-3, Ftg	1	\$26.32	5	\$23.70	10	\$25.00
AV12019	12" X 80T	Compound Miter Saw Blade, 1", C-3, Atb	1	\$36.35	5	\$35.46	15	\$34.54
AV12020	12" X 60T	Combo Novelty Blade, 1", C-3, 2&1	1	\$24.23	5	\$30.52	15	\$23.01
AV12021	12" X 28T	Rip Saw Blade, 1", C-3, Atb	1	\$22.05	5	\$24.30	15	\$20.95
AV12022	12" X 48T	Combo Blade, 1", C-3, Atb	1	\$29.08	5	\$28.37	15	\$27.62

2013 MSI-PRO Distributor Price List

Item	Size	Description	QTY-1	Price\$-1	QTY-2	Price\$-2	QTY-3	Price\$-3
AV12023	12" X 96T	Compound Miter Saw Blade, 1", C-3, Atb	1	\$27.72	5	\$38.45	15	\$26.33
AV12024	12" X 24T	Rescue Saw Blade, 1"/20Mm Bush, C-3, Ftg	1	\$31.36	5	\$29.37	10	\$29.79
AV12060	12" X 60T	Steel Cutting Blade, 1", C-6, Tcg	1	\$27.55	5	\$36.99	15	\$26.17
AV12100	12" X 100T	Steel Cutting Blade, 1", C-6, Tcg	1	\$32.78	5	\$52.55	15	\$31.14
AV12120	12" X 120T	Alum Cutting Blade, 1", C-4, Tcg	1	\$55.64	5	\$48.69	15	\$49.40
AV12524	12" X 24T	Rescue Saw Blade, 1"/20Mm Bush, C-1, Ftg	1	\$24.23	5	\$21.20	25	\$20.65
AV14025	14" X 60T	Combo Blade, 1", C-3, Atb	1	\$46.84	5	\$44.51	15	\$39.95
AV14030	14" X 30T	Rescue Saw Blade, 1"/20Mm Bush, C-1, Ftg	1	\$33.27	5	\$29.11	15	\$28.09
AV14080	14" X 80T	Steel Cutting Blade, 1", C-6, Tcg	1	\$54.04	5	\$47.29	25	\$46.05
AV14120	14" X 120T	Steel Cutting Blade, 1", C-6, Tcg	1	\$72.60	5	\$63.53	15	\$61.87
AV15080	15" X 80T	Combo Blade, 1", C-3, Atb	1	\$75.50	5	\$66.06	15	\$31.90
AV15110	15" X 110T	Alum Cutting Blade, 1", C-4, Tcg	1	\$58.33	5	\$51.04	15	\$41.52
AV16025	16" X 80T	Combo Blade, 1", C-3, Atb	1	\$35.64	5	\$31.19	15	\$28.07
AV16160	16-5/16" X 60T	Combo Blade, 1", C-3, Atb	1	\$47.19	2	\$44.94	10	\$40.45
AV32024	3-1/4" X 24T	Combo Blade, 10Mm, C-2, Tct	1	\$5.27	5	\$4.61	25	\$3.21
AV34024	3 3/8" X 24T	Combo Blade, 10Mm, C-2, Atb	1	\$5.75	5	\$5.47	15	\$4.92
AV40020	4" X 20T	Combo Blade, 1/2"Or3/8", C-2, Atb	1	\$6.35	5	\$5.56	25	\$3.61
AV40040	4" X 40T	Combo Blade, 1/2"Or3/8", C-2, Atb	1	\$8.69	5	\$7.60	25	\$7.41
AV49940	4" X 20T	Steel Cutting Blade, 20Mm, C-6, Tcg	1	\$8.08	5	\$7.07	25	\$6.09
AV54024	5-3/8" X 24T	Combo Blade, 20Mm-10Mm, C-2, Atb	1	\$3.56	5	\$5.72	25	\$3.38
AV54924	5-3/8" X 24T	Steel Cutting Blade, 20Mm/10Mm, C-6, Tcg	1	\$11.46	5	\$10.03	25	\$6.55
AV55024	5 1/2" X 24T	Combo Blade, 5/8", C-2, Atb	1	\$6.60	5	\$5.78	25	\$5.63
AV62546	6 1/4" X 46T	Steel Cutting Blade, 5/8", C-6, Tcg	1	\$13.71	5	\$12.00	25	\$9.92
AV65024	6 1/2" X 24T	Combo Blade, 5/8",Dia,C-6,Atb	1	\$5.85	5	\$6.38	25	\$5.56
AV65052	6 1/2" X 52T	Combo Blade, 5/8", C-2, Atb	1	\$12.15	5	\$10.63	25	\$7.48
AV65948	6 1/2" X 48T	Steel Cutting Blade, 5/8", C-6, Tcg	1	\$14.58	5	\$12.76	25	\$10.15
AV67540	6 3/4" X 40T	Steel Cutting Blade, 20Mm, C-6, Tcg	1	\$14.06	5	\$12.30	25	\$9.62
AV69930	6" X 30T, 5T Chippers	Stack Dado Set, 5/8",C4	1	\$32.85	5	\$30.00	15	\$27.00
AV72410	7 1/4" X 24T, 10-Pk	Combo Blade, 5/8",Dia,C-2,Atb	1	\$30.00	5	\$26.55	15	\$23.90
AV72518	7 1/4" X 18T	Deck/Nail Hd Cutter,Dia,5/8",C6 Atb	1	\$4.99	5	\$4.74	25	\$4.26
AV72524	7 1/4" X 24T	Combo Blade, 5/8",Dia,C-2,Atb	1	\$3.45	5	\$3.27	25	\$2.94
AV72536	7 1/4" X 36T	Steel Cutting Blade, 5/8",Dia,C-6,Tcg	1	\$13.96	5	\$12.22	25	\$11.24
AV72540	7 1/4" X 40T	Combo Blade, 5/8",Dia,C-2,Atb	1	\$10.06	5	\$9.56	25	\$8.60
AV72550	7 1/4" X 50T	Steel Cutting Blade, 5/8",Dia,C-6,Tcg	1	\$22.40	5	\$20.97	20	\$21.28
AV72560	7 1/4" X 60T	Alum Cutting Blade, 5/8", Dia, C-4, Tcg	1	\$15.63	5	\$13.68	25	\$10.22
AV72568	7 1/4" X 68T	Steel Cutting Blade, 5/8",Dia,C-6,Atb	1	\$24.85	5	\$21.74	25	\$22.06
AV75948	7 1/2" X 48T	Steel Cutting Blade, 20Mm,C-6,Tcg	1	\$15.63	5	\$13.68	25	\$14.16
AV79968	7" X 38T	Steel Cutting Blade, 20Mm,C-6,Tcg	1	\$16.15	5	\$14.13	25	\$13.75
AV80024	8" X 24T	Combo Blade, 5/8",Dia,C-2,Atb	1	\$9.73	5	\$8.51	25	\$5.70
AV80064	8" X 64T	Smooth Cut Blade, 5/8",Dia,C-3,Atb	1	\$11.40	5	\$11.85	25	\$10.83
AV82524	8 1/4" X 24T	Combo Blade, 5/8",Dia,C-2,Atb	1	\$7.57	5	\$7.19	25	\$6.47
AV82540	8 1/4" X 40T	Smooth Cut Blade, 5/8",Dia,C-3,Atb	1	\$11.00	5	\$10.45	25	\$9.41
AV84206	8" X 42T, 6T Chippers	Stack Dado Set,5/8",C-2,6T Rake,Alum Cs	1	\$44.88	5	\$42.64	15	\$36.27
AV89948	8" X 48T	Steel Cutting Blade, 5/8", C-6, Tcg	1	\$16.83	5	\$14.73	25	\$14.34
AV90048	9" X 48T	Steel Cutting Blade, 1", C-6, Tcg	1	\$17.55	5	\$22.11	25	\$16.67
PM0712040	10" X 40T	Extreme Saw Blade, 5/8" - Carded	1	\$8.43	5	\$8.01	25	\$7.21

Item	Size	Description	QTY-1	Price\$-1	QTY-2	Price\$-2	QTY-3	Price\$-3
PM0712060	10" X 60T	Extreme Saw Blade, 5/8" - Carded	1	\$12.06	5	\$11.46	25	\$10.31
PM0723080	12" X 80T	Extreme Saw Blade, 1", C-2, Atb	1	\$15.50	5	\$14.73	25	\$13.25
PM0770024	7-1/4" X 24T, Tray Pk	Extreme Saw Blade, 5/8", Dia, C-2, Atb	1	\$3.68	5	\$3.49	25	\$3.14
PM0770040	7-1/4" X 40T, Tray Pk	Extreme Saw Blade, 5/8", Dia, C-2, Atb	1	\$4.95	5	\$4.71	25	\$4.24
PM0772024	7-1/4" X 24T, Bulk Pk	Extreme Saw Blade, 5/8", 10Pk-Displayer	1	\$29.90	5	\$28.41	25	\$25.56
PM0772040	7-1/4" X 40T, Bulk Pk	Extreme Saw Blade, 5/8", 10Pk-Displayer	1	\$43.20	5	\$41.04	25	\$36.94
PM0778010	7-1/4" X 16-Slot, 10-Pk	Steel Blade - Steel Cutting, Bulk	1	\$17.40	5	\$16.53	25	\$14.88
PM0778040	7-1/4" X 186T, 10-Pk	Steel Blade - Vinyl Cutting, Bulk	1	\$23.50	5	\$22.33	25	\$20.09
PM0778050	7-1/4" X 186T, 10-Pk	Steel Blade - Plywood Cutting, Bulk	1	\$23.50	5	\$22.33	25	\$20.09
PM0782402	8" X 24T, 2T Chippers	Promax Stack Dado Set, 5/8", C-2, Wood Bx	1	\$27.95	5	\$26.55	15	\$24.42
Measuring Tools								
MC0020	20"	Caliper, Lrg Digital-Std/Metric, Wood Cs	1	\$123.50	3	\$117.33	10	\$105.59
MC0024	24"	Caliper, Lrg Digital-Std/Metric, Wood Cs	1	\$166.25	3	\$157.94	10	\$142.14
MC0036	36"	Caliper, Lrg Digital-Std/Metric, Wood Cs	1	\$327.75	3	\$311.36	10	\$280.23
MC0040	40"	Caliper, Lrg Digital-Std/Metric, Wood Cs	1	\$379.05	3	\$360.10	10	\$324.09
MCD00006	6"	Caliper, Decimal Dial	1	\$22.99	5	\$20.90	25	\$19.86
MDI00001	0-1"	Gauge, Dial Indicator White Face	1	\$9.74	5	\$8.85	25	\$8.41
MM00001	0-1"	Micrometer	1	\$9.14	5	\$8.31	25	\$7.89
MM00012	1"-2"	Micrometer	1	\$13.07	5	\$11.88	25	\$11.29
MM00023	2"-3"	Micrometer	1	\$14.11	5	\$12.83	25	\$12.19
MM00034	3"-4"	Micrometer	1	\$16.46	5	\$14.96	25	\$14.21
MT11012	12"	Combination Square	1	\$8.84	5	\$8.40	20	\$7.56
MT79050	-	Gauge, Angle Divider	1	\$7.74	5	\$7.35	20	\$6.62
MT79051	-	Gauge, Center Finder	1	\$2.21	5	\$2.10	20	\$1.89
MT79052	8"	Caliper, Outside	1	\$4.37	5	\$4.15	20	\$3.74
MT79054	8"	Caliper, Inside	1	\$4.37	5	\$4.15	20	\$3.74
MT79056	8"	Caliper, Dividers	1	\$4.37	5	\$4.15	20	\$3.74
MT79057B	6-Pc	Caliper, Measuring Set, Poly Bagged	1	\$12.97	5	\$12.32	10	\$11.09
MT79058	8"	Caliper, Dividers & Compass - Combo	1	\$4.37	5	\$4.15	20	\$3.74
MT79058-P	8", 3-Pcs Set	Caliper, Measuring Set, Poly Bagged	1	\$7.95	5	\$7.55	20	\$6.80
MT79068	0" - 3-3/4"	Gauge, Line/Depth Marker	1	\$10.95	5	\$10.40	20	\$9.36
MT79070	180 Degree	Protractor, Plastic	1	\$3.45	5	\$3.28	20	\$2.95
MT79071	15 "	Protractor, Large Aluminum	1	\$18.11	5	\$17.20	20	\$15.48
MT79073	-	Protractor & Saw Guide	1	\$8.99	5	\$8.54	20	\$7.69
MT79111	1/32" - 2"	Gauge, Thickness Gauge, Aluminum	1	\$5.47	5	\$5.20	20	\$4.68
MT79304	4"	Caliper, Digital-Std/Metr/Fract Plst Bdy	1	\$16.21	5	\$15.40	10	\$13.86
MT79306	6"	Caliper, Digital-Std/Metr/Fract Plst Bdy	1	\$18.25	5	\$17.34	10	\$16.47
MT79308	8"	Caliper, Digital-Std/Metr/Fract Plst Bdy	1	\$27.55	5	\$26.17	10	\$23.56
MT79312	12"	Caliper, Digital-Std/Metr/Fract Plst Bdy	1	\$42.75	5	\$40.61	10	\$36.55
MT79317	6"	Protractor, Stainless Steel	1	\$6.97	5	\$6.62	20	\$5.96
MT79506	6"	Caliper, Digital-Std/Metr/Frac Steel Bdy	1	\$23.35	5	\$22.18	10	\$19.96
MT79508	8"	Caliper, Digital-Std/Metr/Frac Steel Bdy	1	\$32.70	5	\$31.07	10	\$27.96
MT79512	12"	Caliper, Digital-Std/Metr/Frac Steel Bdy	1	\$42.75	5	\$40.61	10	\$36.55
MT79552	4"	Caliper, Brass Venier	1	\$5.47	5	\$5.20	20	\$4.68
MT79586	0" - 1"	Guage, Angle & Depth Gauge	1	\$2.95	5	\$2.80	20	\$2.52
MT79587	-	Gauge, Step Gauge	1	\$2.95	5	\$2.80	20	\$2.52



2013 MSI-PRO Distributor Price List

Item	Size	Description	QTY-1	Price\$-1	QTY-2	Price\$-2	QTY-3	Price\$-3
MT87002	2"	Solid Square	1	\$5.41	5	\$5.14	20	\$4.63
MT87003	3"	Solid Square	1	\$5.58	5	\$5.30	20	\$4.77
MT87004	4"	Solid Square	1	\$6.19	5	\$5.88	20	\$5.29
MT87006	6"	Solid Square	1	\$7.97	5	\$7.57	20	\$6.81
MT87009	9"	Solid Square	1	\$12.97	5	\$12.32	10	\$11.09
MT87101	24"	Combination Square	1	\$9.95	5	\$9.45	10	\$8.51
MT87103	48"	Combination Square	1	\$13.95	5	\$13.25	10	\$11.93
MTI00050	.0005" 0-50	Gauge, Dial Test Indicator	1	\$28.88	5	\$27.44	10	\$24.69
Diamond Products								
DP2400005	220 Grit	Diamond Needle File, 5Pc Set	1	\$3.59	20	\$3.41	-	-
DP2400010	220 Grit	Diamond Needle File 10Pc Set	1	\$6.62	20	\$6.29	-	-
DP2400022	36 Grit	Diamond Grind Wheel Dresser, 1/2"X1-3/4"	1	\$6.94	20	\$6.59	-	-
DP2406053	150 Grit - Std	Diamond Burr 8Pc Set, 3/32" Shank	1	\$3.59	20	\$3.41	-	-
DP2406055	100 Grit - Med	Diamond Burr 8Pc Set, 3/32" Shank	1	\$5.45	20	\$5.18	-	-
DP2406059	50 Grit - Coarse	Diamond Burr 8Pc Set, 3/32" Shank	1	\$5.97	20	\$5.67	-	-
DP2406075	100 Grit - Med	Diamond Burr 30Pc Set, 3/32" Shank	1	\$5.97	20	\$5.67	-	-
DP2406083	150 Grit - Std	Diamond Burr 20Pc Set, 3/32" Shank	1	\$2.88	20	\$2.74	-	-
DP2406085	100 Grit - Med	Diamond Burr 20Pc Set, 3/32" Shank	1	\$2.98	20	\$2.83	-	-
DP2407071	60/80 Grit	Diamond Riffler File 10Pc Set	1	\$10.85	20	\$10.31	-	-
DP2407092	200 Grit	Diamond Riffler File 5Pc Set	1	\$3.59	20	\$3.41	-	-
DP2407093	220 Grit	Diamond Riffler File 10Pc Set	1	\$6.39	20	\$6.07	-	-
DP2408053	150 Grit - Std	Diamond Burr 8Pc Set, 1/8" Shank	1	\$3.59	20	\$3.41	-	-
DP2408055	150 Grit - Std	Diamond Burr 8Pc Set, 1/8" Shank	1	\$3.82	20	\$3.63	-	-
DP2408059	50 Grit - Coarse	Diamond Burr 8Pc Set, 1/8" Shank	1	\$5.97	20	\$5.67	-	-
DP2408075	100 Grit - Med	Diamond Burr 30Pc Set, 1/8" Shank	1	\$5.97	20	\$5.67	-	-
DP2408093	150 Grit - Std	Diamond Burr 20Pc Set, 1/8" Shank	1	\$2.88	20	\$2.74	-	-
DP2408095	100 Grit - Med	Diamond Burr 20Pc Set, 1/8" Shank	1	\$2.98	20	\$2.83	-	-
DP2409037	80 Grit - Med	Diamond Burr 6Pc Set, 1/4" Shank	1	\$7.75	20	\$7.36	-	-
DP2409059	50 Grit - Coarse	Diamond Burr 5Pc Set, 1/4" Shank	1	\$7.75	20	\$7.36	-	-
DP2414134	1-5/8" Diameter	Cutting Wheel Set, 1/8" & 1/4" Mandrel	1	\$3.97	20	\$3.77	-	-
DP2414134S	1-5/8" Diameter	Diamond Wheel - Wheel Only (Bulk)	1	\$3.00	20	\$2.85	-	-
DP2431009	9" Dia, Coarse Grit	Brazed Diamond, Demolition Blade, 7/8"	1	\$100.38	5	\$95.54	-	-
DP2432007	7" Dia, Coarse Grit	Brazed Diamond, Demolition Blade, 5/8"	1	\$59.14	5	\$56.33	-	-
DP2433007	7" Dia, Med Grit	Brazed Diamond, Multi-Purpose Blade, 5/8	1	\$59.14	5	\$56.33	-	-
DP2433045	4-1/2" Dia, Med Grit	Brazed Diamond, Multi-Purpose Blade, 5/8	1	\$32.94	5	\$31.38	-	-
DP2440025	4" Cupped Wheel	Brazed Diamond, 20/25# Coarse Grit	1	\$69.92	5	\$66.42	-	-
DP2440035	4" Cupped Wheel	Brazed Diamond, 30/35# Med. Grit	1	\$69.92	5	\$66.42	-	-
DP2445025	4-1/2" Cupped Wheel	Brazed Diamond, 20/25# Coarse Grit	1	\$82.33	5	\$78.21	-	-
DP2445035	4-1/2" Cupped Wheel	Brazed Diamond, 30/35# Med. Grit	1	\$82.33	5	\$78.21	-	-
DP2445130	4-1/2" Cupped Wheel	Brazed Diamond, 30# Coarse Grit	1	\$59.25	5	\$55.65	-	-
DP2445150	4-1/2" Cupped Wheel	Brazed Diamond, 50# Med Grit	1	\$59.25	5	\$55.65	-	-
DP2445330	4-1/2" Flat Wheel	Brazed Diamond, 30/35# Med. Grit	1	\$38.33	5	\$36.17	-	-
DP2450000	3/4" Diameter	Cutting Wheel 5Pc Set, 1/8" Mandrel	1	\$4.47	20	\$4.25	-	-
DP2450100	1" Diameter	Cutting Wheel 4Pc Set, 1/8" Mandrel	1	\$5.97	20	\$5.67	-	-
DP2480025	1/4"	Dia Hole Saw-1/8" Shank-Soft Tile/Glass	1	\$1.98	20	\$1.88	-	-
DP2480035	5/16"	Dia Hole Saw-1/8" Shank-Soft Tile/Glass	1	\$2.07	20	\$1.97	-	-



Brazed Diamond Series

Features

- Premium quality industrial diamonds
- Outlasts coated abrasives 100x plus
- 3x Faster cutting and longer life than carbide grit
- 90% less sparks than abrasives during cutting
- Can be used dry or wet
- Brazed diamond cuts: A wide variety of material, from ferrous to most non-ferrous metals, most construction materials, concrete, granite, tile, PVC, fiberglass, fiber cement board and more.



24-40025

4" Dia. - Coarse Grit 7/8" Arbor

24-45025

4-1/2" Dia. - Coarse Grit 7/8" Arbor

24-40035

4" Dia. - Medium Grit 7/8" Arbor

24-45035

4-1/2" Dia. - Medium Grit 7/8" Arbor

Brazed Diamond Type 27 Depressed Center Wheel

24-45130

4-1/2" Dia. - Course Grit 5/8-11 Arbor

24-45150

4-1/2" Dia. - Medium Grit 7/8" Arbor



Brazed Diamond Burrs - 20/25 Grit



24-99070

3/4" x 2-1/4"

1/4" Shank - Coarse Grit

24-99061

5/8" x 2-3/4"

1/4" Shank - Coarse Grit

24-99501

5/8" x 3-1/2" x 3/8"

3/8" Harden Shank - Coarse Grit

24-99502

3/4" x 3-1/2"

3/8" Harden Shank - Coarse Grit

Brazed Diamond Grinding Wheel

24-45330

4-1/2" Dia. Grinding

Wheel - Medium

Grit 7/8"-5/8" Arbor



Brazed Diamond Saw Blades

These blades have been designed to cut a variety of materials including Ductile iron, ferrous, most non-ferrous metals, stone, concrete, asphalt, pvc pipe, plastic pipe, fiber cement board and most other construction materials.



24-32007

7" Demolition Blade

5/8" - Diamond Arbor
Coarse Grit

24-33045

4-1/2" Multi-Purpose Blade

7/8" - 5/8" Arbor

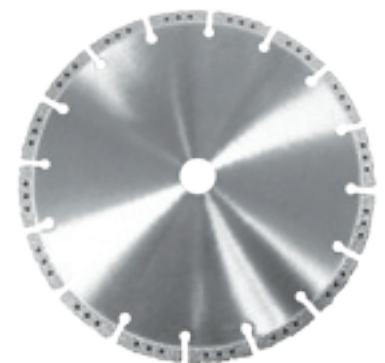
Medium Grit

24-33007

7" Multi-Purpose Blade

5/8" - Diamond Arbor

Medium Grit



24-31009

9" HD Demolition Blade

7/8" Arbor - Coarse Grit



2013 MSI-PRO Distributor Price List

Item	Size	Description	QTY-1	Price\$-1	QTY-2	Price\$-2	QTY-3	Price\$-3
DP2480037	3/8"	Dia Hole Saw-1/8" Shank-Soft Tile/Glass	1	\$2.69	20	\$2.56	-	-
DP2480038	7/16"	Dia Hole Saw-1/4" Shank-Soft Tile/Glass	1	\$2.79	20	\$2.65	-	-
DP2480050	1/2"	Dia Hole Saw-1/4" Shank-Soft Tile/Glass	1	\$3.20	20	\$3.04	-	-
DP2480075	3/4"	Dia Hole Saw-1/4" Shank-Soft Tile/Glass	1	\$4.78	20	\$4.58	-	-
DP2480100	1"	Dia Hole Saw-1/4" Shank-Soft Tile/Glass	1	\$6.75	20	\$6.41	-	-
DP2484025	1/4"	Dia Hole Saw, Hd, 1/4" Shank, Stone/Tile	1	\$2.27	20	\$2.16	-	-
DP2484037	3/8"	Dia Hole Saw, Hd, 1/4" Shank, Stone/Tile	1	\$3.30	20	\$3.14	-	-
DP2484050	1/2"	Dia Hole Saw, Hd, 1/4" Shank, Stone/Tile	1	\$4.42	20	\$4.20	-	-
DP2484075	3/4"	Dia Hole Saw, Hd, 1/4" Shank, Stone/Tile	1	\$6.64	20	\$6.31	-	-
DP2484100	1"	Dia Hole Saw, Hd, 1/4" Shank, Stone/Tile	1	\$8.84	20	\$8.40	-	-
DP2484125	1-1/8"	Dia Hole Saw, Hd, 3/8" Shank, Stone/Tile	1	\$9.95	20	\$9.45	-	-
DP2484250	1-1/4"	Dia Hole Saw, Hd, 3/8" Shank, Stone/Tile	1	\$11.16	20	\$10.60	-	-
DP2484375	1-3/8"	Dia Hole Saw, Hd, 3/8" Shank, Stone/Tile	1	\$12.18	20	\$11.57	-	-
DP2484500	1-1/2"	Dia Hole Saw, Hd, 3/8" Shank, Stone/Tile	1	\$13.71	20	\$13.02	-	-
DP2484750	1-3/4"	Dia Hole Saw, Hd, 3/8" Shank, Stone/Tile	1	\$15.48	20	\$14.71	-	-
DP2484900	2"	Dia Hole Saw, Hd, 3/8" Shank, Stone/Tile	1	\$17.67	20	\$16.79	-	-
DP2486025	1/4"	Sintered Dia Hole Saw - Hd Tile, Granite	1	\$12.01	20	\$11.41	-	-
DP2486037	3/8"	Sintered Dia Hole Saw - Hd Tile, Granite	1	\$15.70	20	\$14.92	-	-
DP2486050	1/2"	Sintered Dia Hole Saw - Hd Tile, Granite	1	\$17.22	20	\$16.36	-	-
DP2486062	5/8"	Sintered Dia Hole Saw - Hd Tile, Granite	1	\$17.97	20	\$17.07	-	-
DP2486075	3/4"	Sintered Dia Hole Saw - Hd Tile, Granite	1	\$22.40	20	\$21.28	-	-
DP2486100	1"	Sintered Dia Hole Saw - Hd Tile, Granite	1	\$24.84	20	\$23.60	-	-
DP2486125	1-1/8"	Sintered Dia Hole Saw - Hd Tile, Granite	1	\$27.61	20	\$26.23	-	-
DP2486250	1-1/4"	Sintered Dia Hole Saw - Hd Tile, Granite	1	\$29.62	20	\$28.14	-	-
DP2486375	1-3/8"	Sintered Dia Hole Saw - Hd Tile, Granite	1	\$32.26	20	\$30.65	-	-
DP2486500	1-1/2"	Sintered Dia Hole Saw - Hd Tile, Granite	1	\$33.22	20	\$31.56	-	-
DP2486625	1-5/8"	Sintered Dia Hole Saw - Hd Tile, Granite	1	\$34.21	20	\$32.50	-	-
DP2486750	1-3/4"	Sintered Dia Hole Saw - Hd Tile, Granite	1	\$39.40	20	\$37.43	-	-
DP2486900	2"	Sintered Dia Hole Saw - Hd Tile, Granite	1	\$42.42	20	\$40.30	-	-
DP2488025	1/4"	Dia Hole Saw, Hd, 1/4" Shank, Tile, Glas	1	\$2.17	20	\$2.06	-	-
DP2488037	3/8"	Dia Hole Saw, Hd, 1/4" Shank, Tile, Glas	1	\$2.99	20	\$2.84	-	-
DP2488050	1/2"	Dia Hole Saw, Hd, 1/4" Shank, Tile, Glas	1	\$3.55	20	\$3.37	-	-
DP2488075	3/4"	Dia Hole Saw, Hd, 1/4" Shank, Tile, Glas	1	\$5.25	20	\$4.99	-	-
DP2488100	1"	Dia Hole Saw, Hd, 1/4" Shank, Tile, Glas	1	\$7.83	20	\$7.44	-	-
DP2488125	1-1/8"	Dia Hole Saw, Hd, 3/8" Shank, Tile, Glas	1	\$8.22	20	\$7.81	-	-
DP2488250	1-1/4"	Dia Hole Saw, Hd, 3/8" Shank, Tile, Glas	1	\$8.35	20	\$7.93	-	-
DP2488375	1-3/8"	Dia Hole Saw, Hd, 3/8" Shank, Tile, Glas	1	\$9.11	20	\$8.65	-	-
DP2488500	1-1/2"	Dia Hole Saw, Hd, 3/8" Shank, Tile, Glas	1	\$9.95	20	\$9.45	-	-
DP2488750	1-3/4"	Dia Hole Saw, Hd, 3/8" Shank, Tile, Glas	1	\$11.62	20	\$11.04	-	-
DP2488900	2"	Dia Hole Saw, Hd, 3/8" Shank, Tile, Glas	1	\$13.25	20	\$12.59	-	-
DP2493701	80 Grit - Med	Wheel Str, 3/4"X1/8", 1/8" Shank	1	\$2.29	20	\$2.18	-	-
DP2493702	80 Grit - Med	Wheel Str, 3/4"X1/4", 1/8" Shank	1	\$2.66	20	\$2.53	-	-
DP2493702W	80 Grit - Med	Wheel Str, 3/4"X1/4", Wheel Only, Bulk	1	\$2.42	20	\$2.30	-	-
DP2493703	80 Grit - Med	Wheel Str, 3/4"X3/4", 1/8" Shank	1	\$2.84	20	\$2.70	-	-
DP2493703W	80 Grit - Med	Wheel Str, 3/4"X3/8", Wheel Only, Bulk	1	\$2.59	20	\$2.46	-	-
DP2495710	80 Grit - Med	V-Wheels, 3/4"X1/8", 1/8" Shank	1	\$2.84	20	\$2.70	-	-

Item	Size	Description	QTY-1	Price\$-1	QTY-2	Price\$-2	QTY-3	Price\$-3
DP2495720	80 Grit - Med	V-Wheels, 3/4"X1/4", 1/8" Shank	1	\$3.42	20	\$3.25	-	-
DP2495730	80 Grit - Med	V-Wheels, 3/4"X3/8", 1/8" Shank	1	\$3.14	20	\$2.98	-	-
DP2498506	50 Grit - Coarse	Diamond Burr, 1/4" Ball Head, 1/8" Shank	1	\$1.25	20	\$1.19	-	-
DP2499055	1/4" Shaft Std	Brazed Diamond Burr - Ballnose Cylinder	1	\$15.17	10	\$14.41	-	-
DP2499061	1/4" Shaft Std	Brazed Diamond Burr - Ballnose Cylinder	1	\$15.17	10	\$14.41	-	-
DP2499070	1/4" Shaft Std	Brazed Diamond Burr - Ballnose Cylinder	1	\$17.91	10	\$17.01	-	-
DP2499501	3/8" Shaft Hardened	Brazed Diamond Burr - Ballnose Cylinder	1	\$24.59	10	\$23.36	-	-
DP2499502	3/8" Shaft Hardened	Brazed Diamond Burr - Tree Shape	1	\$24.59	10	\$23.36	-	-
Wood Boring Products								
WB70007	7-Pc	Forstner Set - Blow Mold Case	1	\$11.17	10	\$10.61	-	-
WB70016	16-Pc	Forstner Set - Blow Mold Case	1	\$39.34	10	\$37.37	-	-
WB70017	7-Pc	Carbide Brad Point Set	1	\$17.44	10	\$16.57	-	-
WB70019	13-Pc	Carbide Brad Point Set	1	\$33.93	10	\$32.23	-	-
WB70022	22-Pc	Taper Countersink Set	1	\$17.44	10	\$16.57	-	-
WB70031	10-Pc	Combination Taper Drill/Countersink Set	1	\$26.31	10	\$24.99	-	-
WB70231	10-Pc	Taper Drill/Countersink Set, Custom Case	1	\$42.97	5	\$40.82	-	-
WB70250	1/4"	Forstner Bit - Carded	1	\$1.50	10	\$1.43	-	-
WB70312	5/16"	Forstner Bit - Carded	1	\$1.60	10	\$1.52	-	-
WB70375	3/8"	Forstner Bit - Carded	1	\$1.70	10	\$1.62	-	-
WB70437	7/16"	Forstner Bit - Carded	1	\$1.82	10	\$1.73	-	-
WB70500	1/2"	Forstner Bit - Carded	1	\$1.94	10	\$1.84	-	-
WB70562	9/16"	Forstner Bit - Carded	1	\$2.01	10	\$1.91	-	-
WB70625	5/8"	Forstner Bit - Carded	1	\$2.11	10	\$2.01	-	-
WB70687	11/16"	Forstner Bit - Carded	1	\$2.30	10	\$2.19	-	-
WB70750	3/4"	Forstner Bit - Carded	1	\$2.42	10	\$2.30	-	-
WB70812	13/16"	Forstner Bit - Carded	1	\$2.60	10	\$2.47	-	-
WB70875	7/8"	Forstner Bit - Carded	1	\$2.66	10	\$2.53	-	-
WB70937	15/16"	Forstner Bit - Carded	1	\$2.84	10	\$2.70	-	-
WB71000	1"	Forstner Bit - Carded	1	\$2.90	10	\$2.76	-	-
WB71026	26Mm	26Mm Forstner Bit - Carded	1	\$3.23	10	\$3.07	-	-
WB71125	1-1/8"	Forstner Bit - Carded	1	\$3.23	10	\$3.07	-	-
WB71250	1-1/4"	Forstner Bit - Carded	1	\$3.87	10	\$3.68	-	-
WB71312	1-5/16"	Forstner Bit - Carded	1	\$3.43	10	\$3.26	-	-
WB71340	35Mm	Forstner Bit - Carded	1	\$4.48	10	\$4.26	-	-
WB71375	1-3/8"	Forstner Bit - Carded	1	\$4.36	10	\$4.15	-	-
WB71500	1-1/2"	Forstner Bit - Carded	1	\$4.84	10	\$4.60	-	-
WB71562	1-9/16"	Forstner Bit - Carded	1	\$5.08	10	\$4.82	-	-
WB71565	40Mm	Forstner Bit - Carded	1	\$5.08	10	\$4.83	-	-
WB71625	1-5/8"	Forstner Bit - Carded	1	\$5.32	10	\$5.05	-	-
WB71750	1-3/4"	Forstner Bit - Carded	1	\$5.81	10	\$5.52	-	-
WB71875	1-7/8"	Forstner Bit - Carded	1	\$6.29	10	\$5.98	-	-
WB71937	1-15/16"	Forstner Bit - Carded	1	\$6.53	10	\$7.48	-	-
WB72000	2"	Forstner Bit - Carded	1	\$6.78	10	\$6.44	-	-
WB72125	2-1/8"	Forstner Bit - Carded	1	\$7.26	10	\$6.90	-	-
WB72225	2-1/4"	Forstner Bit - Carded	1	\$8.76	10	\$8.32	-	-
WB72375	2-3/8"	Forstner Bit - Carded	1	\$9.80	10	\$9.31	-	-



2013 MSI-PRO Distributor Price List

Item	Size	Description	QTY-1	Price\$-1	QTY-2	Price\$-2	QTY-3	Price\$-3
WB72500	2-1/2"	Forstner Bit - Carded	1	\$10.82	10	\$10.30	-	-
WB72625	2-5/8"	Forstner Bit - Carded	1	\$11.86	10	\$11.27	-	-
WB72750	2-3/4"	Forstner Bit - Carded	1	\$12.90	10	\$12.26	-	-
WB72875	2-7/8"	Forstner Bit - Carded	1	\$13.92	10	\$13.22	-	-
WB73000	3"	Forstner Bit - Carded	1	\$14.96	10	\$14.21	-	-
WB73125	3-1/8"	Forstner Bit - Carded	1	\$16.00	10	\$15.20	-	-
WB73250	3-1/4"	Forstner Bit - Carded	1	\$17.02	10	\$16.17	-	-
WB73500	3-1/2"	Forstner Bit - Carded	1	\$19.08	10	\$18.13	-	-
WB73562	3-9/16"	Forstner Bit - Carded	1	\$19.08	10	\$18.13	-	-
WB73625	3-5/8"	Forstner Bit - Carded	1	\$20.12	10	\$19.11	-	-
WB73687	3-11/16"	Forstner Bit - Carded	1	\$21.01	10	\$19.96	-	-
WB73750	3-3/4"	Forstner Bit - Carded	1	\$21.16	10	\$20.10	-	-
WB73875	3-7/8"	Forstner Bit Hex - Carded	1	\$21.67	10	\$20.59	-	-
WB73925	25Mm	Forstner Bit - Carded	1	\$9.97	10	\$9.47	-	-
WB73930	30Mm	Forstner Bit	1	\$10.97	10	\$11.92	-	-
WB73935	35Mm	Carbide Boring Bit	1	\$11.97	10	\$11.37	-	-
WB79128	3/8"	Step Drill-Flat Bottom, 1/8"Pilot - Card	1	\$4.80	10	\$4.56	-	-
WB79129	82 Degree	Step Drill - Carded	1	\$4.80	10	\$4.56	-	-
WB79140	5/64" Drill	Hinge Bit For #2 & #3 Screws-Carded	1	\$3.23	10	\$3.07	-	-
WB79141	7/64" Drill	Hinge Bit For #5 & #6 Screws-Carded	1	\$3.23	10	\$3.07	-	-
WB79142	9/64" Drill	Hinge Bit For #8,#9 & #10 Screw - Carded	1	\$3.23	10	\$3.07	-	-
WB79143	11/64" Drill	Hinge Bit For #12 Screw - Carded	1	\$4.33	10	\$4.11	-	-
WB79144	13/64" Drill	Hinge Bit For #14 Screw - Carded	1	\$4.37	10	\$4.15	-	-
WB79148	1/4" Drill	Hinge Bit For 1/4" Screw - Carded	1	\$5.47	10	\$5.20	-	-
WB79149	5Mm Drill	Hinge Bit For 5Mm Screw - Carded	1	\$5.47	10	\$5.20	-	-
WB81015	1/8"	Countersink For 1/8" For #5 Wood Screw	1	\$2.35	10	\$2.23	-	-
WB81016	9/64"	Countersink For 9/64"-#6 Wood Screw	1	\$2.35	10	\$2.23	-	-
WB81017	5/32"	Countersink For 5/32"-#7 Wood Screw	1	\$2.35	10	\$2.23	-	-
WB81018	11/64"	Countersink For 11/64"-#8 Wood Screw	1	\$2.35	10	\$2.23	-	-
WB81019	3/16"	Countersink For 3/16"-#9 Wood Screw	1	\$2.35	10	\$2.23	-	-
WB81020	13/64"	Countersink For 13/64"-#10 Wood Screw	1	\$2.50	10	\$2.38	-	-
WB81022	7/32"	Countersink For 7/32"-#12 Wood Screw	1	\$2.50	10	\$2.38	-	-
WB81024	1/4"	Countersink For 1/4"-#14 Wood Screw	1	\$2.60	10	\$2.47	-	-
WB81035	1/8"	Countersink 3-Pc Set For #5 Wood Screw	1	\$4.21	10	\$4.00	-	-
WB81036	9/64"	Countersink 3-Pc Set For #6 Wood Screw	1	\$4.33	10	\$4.11	-	-
WB81037	5/32"	Countersink 3-Pc Set For #7 Wood Screw	1	\$4.33	10	\$4.11	-	-
WB81038	11/64"	Countersink 3-Pc Set For #8 Wood Screw	1	\$4.39	10	\$4.17	-	-
WB81039	3/16:"	Countersink 3-Pc Set For #9 Wood Screw	1	\$4.45	10	\$4.23	-	-
WB81040	13/64"	Countersink 3-Pc Set For #10 Wood Screw	1	\$4.67	10	\$4.44	-	-
WB81042	7/32"	Countersink 3-Pc Set For #12 Wood Screw	1	\$4.79	10	\$4.55	-	-
WB81043	1/4"	Countersink 3-Pc Set For #14 Wood Screw	1	\$4.35	10	\$4.13	-	-
WB81125	1/8"	Hss Taper Drive Bit For #5 Woodscrew	1	\$1.63	10	\$1.55	-	-
WB81203	13/64"	Hss Taper Drill For #10 Woodscrew	1	\$2.00	10	\$1.90	-	-
WB81218	7/32"	Hss Taper Drill For #12 Woodscrew	1	\$2.12	10	\$2.01	-	-
WB81250	1/4"	Hss Taper Drill For #14 Woodscrew	1	\$2.36	10	\$2.24	-	-
WB81405	9/64"	Hss Taper Drill For #6 Woodwcrew	1	\$1.75	10	\$1.67	-	-

Item	Size	Description	QTY-1	Price\$-1	QTY-2	Price\$-2	QTY-3	Price\$-3
WB81562	6/53"	Hss Taper Drill For #7 Woodscrew	1	\$1.75	10	\$1.67	-	-
WB81719	11/64"	Hss Taper Drill For #8 Woodscrew	1	\$1.82	10	\$1.73	-	-
WB81875	3/16"	Hss Taper Drill For #9 Woodscrew	1	\$1.88	10	\$1.69	-	-
WB81900	81900	Countersink, Carbide, 82 Deg. - Carded	1	\$5.99	10	\$5.39	-	-
WB81907	81907	7 Pc Hss Taper Drill Set	1	\$7.40	10	\$6.66	-	-
WB82499	82499	4-Pc Plug Cutter Set	1	\$7.95	10	\$7.56	-	-
WB82500	82500	1/4" Plug Cutter - Carded	1	\$2.85	10	\$2.71	-	-
WB83125	83125	5/16" Plug Cutter - Carded	1	\$2.97	10	\$2.83	-	-
WB83750	83750	3/8" Plug Cutter - Carded	1	\$3.40	10	\$3.23	-	-
WB84375	84375	7/16" Plug Cutter	1	\$3.75	10	\$3.57	-	-
WB85000	85000	1/2" Plug Cutter - Carded	1	\$3.97	5	\$3.77	-	-
WB85100	1"	Self-Feed Bit, Carded	1	\$9.00	5	\$8.55	-	-
WB85137	1-3/8"	Self-Feed Bit, Carded	1	\$10.68	5	\$10.52	-	-
WB85150	1-1/2"	Self-Feed Bit, Carded	1	\$11.07	5	\$10.52	-	-
WB85200	2"	Self-Feed Bit, Carded	1	\$14.97	5	\$14.22	-	-
WB85215	2-1/8"	Self-Feed Bit, Carded	1	\$15.98	5	\$15.18	-	-
WB85245	2-9/16"	Self-Feed Bit, Carded	1	\$19.29	5	\$18.33	-	-
WB85300	3"	Self-Feed Bit, Carded	1	\$23.73	5	\$22.54	-	-
WB85540	7/16" X 5-1/2"	Extension For Self-Feed Bits, Carded	1	\$4.97	5	\$4.72	-	-
WB85550	7/16" X 10"	Extension For Self-Feed Bits, Carded	1	\$5.97	5	\$5.67	-	-
WB85625	85625	5/8" Plug Cutter - Carded	1	\$4.75	5	\$4.52	-	-
WB90010	10-Pc Set	Hole Saw Set, Carbide Tipped	1	\$111.29	3	\$102.83	-	-
WB91302	48"	Flex Shaft, Inner Cable Replacement	1	\$13.64	5	\$12.68	-	-
WB91304	48"	Flex Shaft, Outer Cable Casing	1	\$15.00	5	\$13.95	-	-
WB91305	48"	Flex Shaft, Complete Cable Replacement	1	\$26.82	5	\$24.94	-	-
WB91306	48", 110-120V, 8A	Flex Shaft Pro Grinder Set	1	\$178.52	3	\$169.59	-	-
WB91307	48", 220-240V, 4A	Flex Shaft Pro Grinder Set	1	\$178.52	3	\$169.59	-	-
WB91314	36"	Flex Shaft, Outer Cable Casing	1	\$12.73	5	\$11.84	-	-
WB91315	36"	Flex Shaft, Complete Cable Replacement	1	\$22.73	5	\$21.14	-	-
WB91507	1/4" Collet	Flex Shaft, Hand Set - Std	1	\$37.93	5	\$35.27	-	-
WB91508	1/8" Collet	Flex Shaft, Hand Set - Slim	1	\$31.85	5	\$29.62	-	-
Woodworking Accessory Products								
AVMB00001	-	Magnetic Base Stand W/ Coarse Adj Arm	1	\$11.75	25	\$11.17	-	-
AVMB00001-2	-	Magnetic Base Stand W/ Fine-Adj Arm	1	\$11.75	25	\$11.17	-	-
WWA0600021B	-	Carbide Scribe With Magnet Tip - Bulk	1	\$3.10	25	\$2.78	-	-
WWA0620018	7-1/2" Long, 8-Pc Set	File, Riffler, Italian Style Wood File	1	\$5.97	10	\$5.67	-	-
WWA0620019	7-1/2" Long, 8-Pc Set	File, Riffler, Hd Wood File	1	\$6.95	10	\$6.60	-	-
WWA0620020	9-1/2" Long, 8-Pc Set	File, Riffler, Jumbo Wood File	1	\$6.95	10	\$6.60	-	-
WWA2500012	12-Pc	Bushing Kit, Stack Dado Blade Spacer	1	\$2.49	10	\$2.37	-	-
WWA70221	12" X 2-1/4"	Push Safety Stick - Carded	1	\$1.96	10	\$1.86	-	-
WWA70222	-	Push Safety "V" Stick	1	\$2.99	10	\$2.84	-	-
WWA78081	8 Oz.	Glue Bisquet Applicator	1	\$2.39	10	\$2.27	-	-
WWA78082	8 Oz.	Glue Brush Applicator	1	\$3.07	10	\$2.92	-	-
WWA78083	8 Oz.	Squeeze Bottle W/Cap	1	\$2.69	10	\$2.56	-	-
WWA79038	7-Pc	Stop Collar 7-Pc Set	1	\$3.49	10	\$3.32	-	-
WWA79044	8 Oz	Glue Roller Bottle	1	\$2.39	10	\$2.27	-	-

2013 MSI-PRO Distributor Price List

Item	Size	Description	QTY-1	Price\$-1	QTY-2	Price\$-2	QTY-3	Price\$-3
WWA79046	180/400 Grit	Honing, Jointer Hone Stone, 4" Long	1	\$8.43	10	\$8.01	-	-
WWA79062	5-Pc	Spring Miter Clamp & Plier Set	1	\$12.85	5	\$12.21	-	-
WWA79063	5-3/4" Wide	Gauge, Steel Contour Gauge	1	\$4.92	10	\$4.67	-	-
WWA79064	5" Wide	Gauge, Contour Gauge - A Left	1	\$7.23	10	\$6.87	-	-
WWA79065	5" Wide	Gauge, Contour Gauge - B Right	1	\$7.34	10	\$6.97	-	-
WWA79066	24"	Taper Jig, Aluminum	1	\$12.50	5	\$11.88	-	-
WWA79067	10"	Gauge, Contour Gauge	1	\$10.85	5	\$10.31	-	-
WWA79069	-	Push Safety Block, Angled Handle	1	\$2.99	10	\$2.84	-	-
WWA79072	-	Push Safety Block	1	\$2.99	10	\$2.84	-	-
WWA79074	-	Featherboard, Double Sided Featherboard	1	\$5.97	10	\$5.67	-	-
WWA79076	-	Jig And Fixture Kit	1	\$2.38	10	\$2.26	-	-
WWA79077	3/4"	Jig Fixture Set	1	\$2.38	10	\$2.26	-	-
WWA79080	2-9/16" - Small	Spring Miter Clamp, Small	1	\$1.33	10	\$1.26	-	-
WWA79081	3-3/8" - Medium	Spring Miter Clamp, Medium	1	\$1.33	10	\$1.26	-	-
WWA79082	4-3/16" - Standard	Spring Miter Clamp, Standard	1	\$1.47	10	\$1.40	-	-
WWA79083	4-15/16" - Large	Spring Miter Clamp, Large	1	\$1.47	10	\$1.40	-	-
WWA79117	-	Honing, Guide	1	\$6.56	10	\$6.23	-	-
WWA79118	5-In-1	Glue Spreader Kit	1	\$5.89	10	\$5.60	-	-
WWA79119	-	Glue Spreader, All In-One	1	\$10.85	5	\$10.31	-	-
WWA79134	-	Featherboard, Wood Featherboard	1	\$5.97	10	\$5.67	-	-
WWA79251	3/4" Chuck	Drill Guide	1	\$27.58	5	\$26.20	-	-
WWA79420	20-Pc	Sanding Drum & Band Set	1	\$5.97	10	\$5.67	-	-
WWA79535	12-Pc	Sanding Drum & Sleeves Set - Super Long	1	\$9.97	10	\$9.47	-	-
WWA79540	9-Pc	Sanding Drum & Sleeves Set - Super Long	1	\$8.97	10	\$8.52	-	-
WWA79585	-	Honing, Angle Checker	1	\$2.54	10	\$2.41	-	-
WWA79592	-	Corner Chisel	1	\$4.37	10	\$4.15	-	-
WWA79615	Small	Screw Extractor - 1/4" (#8 Screw)	1	\$7.83	10	\$7.44	-	-
WWA79616	Medium	Screw Extractor - 5/16" (#10 Screw)	1	\$8.24	10	\$7.83	-	-
WWA79617	Large	Screw Extractor - 3/8" (#12 Screw)	1	\$8.43	10	\$8.01	-	-
WWA79618	3-Pc Set	Screw Extractor, 1/4", 5/16", 3/8"	1	\$22.96	5	\$21.81	-	-
WWA79701	2", 1/4"-20	Knob, T-Knob, Insert-Style	1	\$1.35	10	\$1.28	-	-
WWA79702	2", 3/8"-16	Knob, T-Knob, Insert-Style	1	\$1.35	10	\$1.28	-	-
WWA79705	7-Star, 1/4"-20	Knob, Star Knob, Insert-Style	1	\$0.91	10	\$0.86	-	-
WWA79706	7-Star, 3/8"-16	Knob, Star Knob, Insert-Style	1	\$0.91	10	\$0.86	-	-
WWA79710	7-Star, 1/4"-20	Knob, Star Knob, Stud-Style	1	\$0.84	10	\$0.80	-	-
WWA79712	7-Star, 5/16"-18	Knob, Star Knob, Stud-Style	1	\$0.84	10	\$0.80	-	-
WWA79714	7-Star, 3/8"-16	Knob, Star Knob, Stud-Style	1	\$0.84	10	\$0.80	-	-
WWA79720	1-1/2", 5/16"-18	Knob, Ball Knob, Insert-Style	1	\$1.37	10	\$1.30	-	-
WWA79725	4-1/2", 5/16"-18	Knob, Round Post Handle	1	\$1.68	10	\$1.60	-	-
WWA79726	2-1/2", 5/16"-18	Knob, Ratchet Lever, Stud-Style	1	\$2.31	10	\$2.19	-	-
WWA79727	2-1/2", 5/16"-18	Knob, Ratchet Lever, Insert-Style	1	\$2.31	10	\$2.19	-	-
SS Wheels								
SS-CSS	Caster Set	Spring Loaded Casters (Box Of 4)	1	\$14.95	10	\$14.20	-	-



TERMS & CONDITIONS

MINIMUM ORDER: Minimum order amount is \$100.00 net on all orders. Minimum order of \$50.00 on all tool repair parts orders. All orders less than the minimum will be charged a \$25.00 handling fee.

FREIGHT TERMS: All orders are shipped F.O.B North Plains, OR. Freight will be prepaid on all regularly priced orders over \$750.00 net. Prepaid freight orders will be shipped using a carrier of our choice; standard ground services. Any deviation to this practice will result in the entire cost of shipping becoming the responsibility of customer.

PAYMENT TERMS: Our standard Terms are net 30 days, O.A.C.; early payment discount terms are available. A service charge of 1 - 1/2% per month (annual rate 18%) will be charged on all past due accounts. We also accept the following major credit cards; VISA, MasterCard, & American Express, or we can ship your order C.O.D. An additional service fee of \$15.00 will be added to all C.O.D. orders.

PRICES: All orders are subject to acceptance by MSI-PRO Co at the prices in effect at time of shipping. Prices and discounts are subject to change without notice.

RETURNS: All re-stock returns are subject to a 15% restocking charge. A Return Merchandise Authorization (RMA) number must be obtained prior to returning any product. Re-stock returns will only be allowed within 45 days of invoice date and must be in new and resalable condition to receive credit. Freight must be prepaid by customer. [Merchandise sent to us without prior return authorization will be refused.](#)

WARRANTY: All products are warranted against defects in material and workmanship for six months. This does not apply to any products which have been misused, abused or altered in any way, or worn out from use. Prior authorization required for warranty returns. Warranty is limited to the original purchaser only. Liability under all warranties, express or implied, shall be limited to replacement or credit of the product value only. Normal wear and tear parts are not covered under this warranty.

FREIGHT DAMAGE: It is the responsibility of the consignee to check the shipment for damage and file a claim with the carrier. MSI-PRO's responsibility for delivery of goods ends when it obtains a signed bill of lading from the local carrier at time of pickup at our warehouse.

PRODUCT WARNING: Eye protection and other safety equipment should always be used while using tools and accessories.

CORRESPONDENCE, REMIT & SHIP-TO INFO:

Mail to: MSI-PRO
PO Box 1009
North Plains, OR 97133

Ship to: MSI-PRO
32275 NW Hillcrest Street
North Plains, OR 97133

Phone 800-424-7633
Phone 503-647-7351
Fax 503-647-2272

MSI-Pro





MSI-PRO

P.O. Box 1009
North Plains, OR 97133
Toll Free: (800) 424-7633
Phone: (503) 647-7351
Fax: (503) 647-2272

Jewett-Cameron Lumber Corporation

P.O. Box 1010
North Plains, OR 97133
Phone: (503) 647-0110
Toll Free: (800) 547-5877
Customer Service: (800) 955-2879
Fax: (503) 647-2272

Jewett-Cameron Seed Company

P.O. Box 816
North Plains, OR 97133
Phone: (503) 647-2293
Fax: (503) 647-2046

Greenwood Products, Inc.

PO Box 249
North Plains, OR 97133
Phone: (503) 670-9663
Toll Free: (800) 333-3898
Fax: (503)670-7755

Copyright © 2013, Jewett-Cameron Company
Catalog Price \$9.50